



FOR SALE

8000

**JEFFERSON STREET
FAIRFIELD, CA**

PROPERTY HIGHLIGHTS

- Centrally located in downtown directly across from the Courthouse
- Three (3) parcel property
- Drive-thru capability
- 2.2 parking stalls per 1,000 square feet
- Available for development opportunity
- Interior bank vault
- Easy access to Hwy 80 and Hwy 12

*** BUILDING IS VACANT AND AS IS**

JON BRUNER
Director

RAY DEVLIN
Director

BLAKE BATULA
Associate

SPENCER NIELSEN
Associate

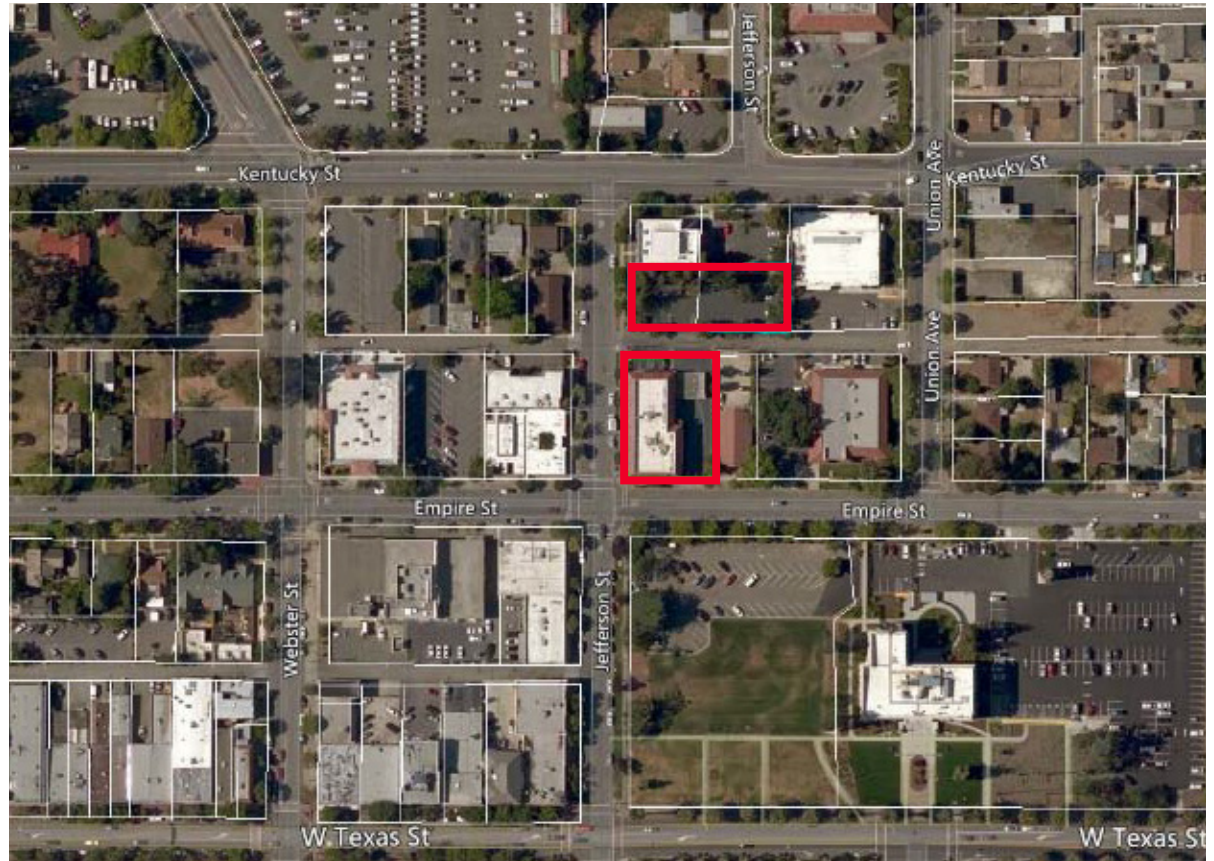
400 Capitol Mall, Suite 1800, Sacramento, CA 95814 | CA License No: 00616335

**FOR MORE INFO, PLEASE CALL
+1 916 288 4800**

FOR SALE
800
JEFFERSON STREET
FAIRFIELD, CA

PROPERTY INFORMATIONAL SUMMARY

- Land Area: Approximately 15,000 SF + 14,156 SF of parking
- Building Area: Approximately 8,270 SF
- Year Built: 1980s
- Zoning: HO
- APN: 0030-191-090, 150 & 160



JON BRUNER

Director
+1 916 288 4427
jon.bruner@cushwake.com
LIC #01303348

BLAKE BATULA

Associate
+1 916 288 4423
blake.batula@cushwake.com
LIC #01948319

SPENCER NIELSEN

Associate
+1 916 288 4531
spencer.nielsen@cushwake.com
LIC #01964163

RAY DEVLIN

Director
+1 925 627 2883
ray.devlin@cushwake.com
LIC #01199417

FOR SALE

800

JEFFERSON STREET
FAIRFIELD, CA



| Demographics | 1-mile | 2-mile | 3-mile |
|------------------------------------|----------|----------|----------|
| Population | 20,544 | 66,675 | 101,539 |
| Daytime Population | 24,860 | 60,875 | 88,484 |
| Median Household Income | \$46,723 | \$53,961 | \$61,213 |
| Median Age | 31.9 | 33.0 | 34.7 |
| Education (some college or higher) | 47.3% | 51% | 55.8% |

JON BRUNER

Director
+1 916 288 4427
jon.bruner@cushwake.com
LIC #01303348

BLAKE BATULA

Associate
+1 916 288 4423
blake.batula@cushwake.com
LIC #01948319

SPENCER NIELSEN

Associate
+1 916 288 4531
spencer.nielsen@cushwake.com
LIC #01964163

RAY DEVLIN

Director
+1 925 627 2883
ray.devlin@cushwake.com
LIC #01199417

FOR SALE
800

JEFFERSON STREET
FAIRFIELD, CA



San Francisco
Bay National
Estuarine
Research...



Solano County Juvenile
Detention Facility

Linear
Park Trail

Spyglass Hill
Open Space

JON BRUNER

Director
+1 916 288 4427
jon.bruner@cushwake.com
LIC #01303348

BLAKE BATULA

Associate
+1 916 288 4423
blake.batula@cushwake.com
LIC #01948319

SPENCER NIELSEN

Associate
+1 916 288 4531
spencer.nielsen@cushwake.com
LIC #01964163

RAY DEVLIN

Director
+1 925 627 2883
ray.devlin@cushwake.com
LIC #01199417