



**43 WEST DUDLEY TOWN ROAD
BLOOMFIELD, CT 06002**

PRICE REDUCTION

\$150,000

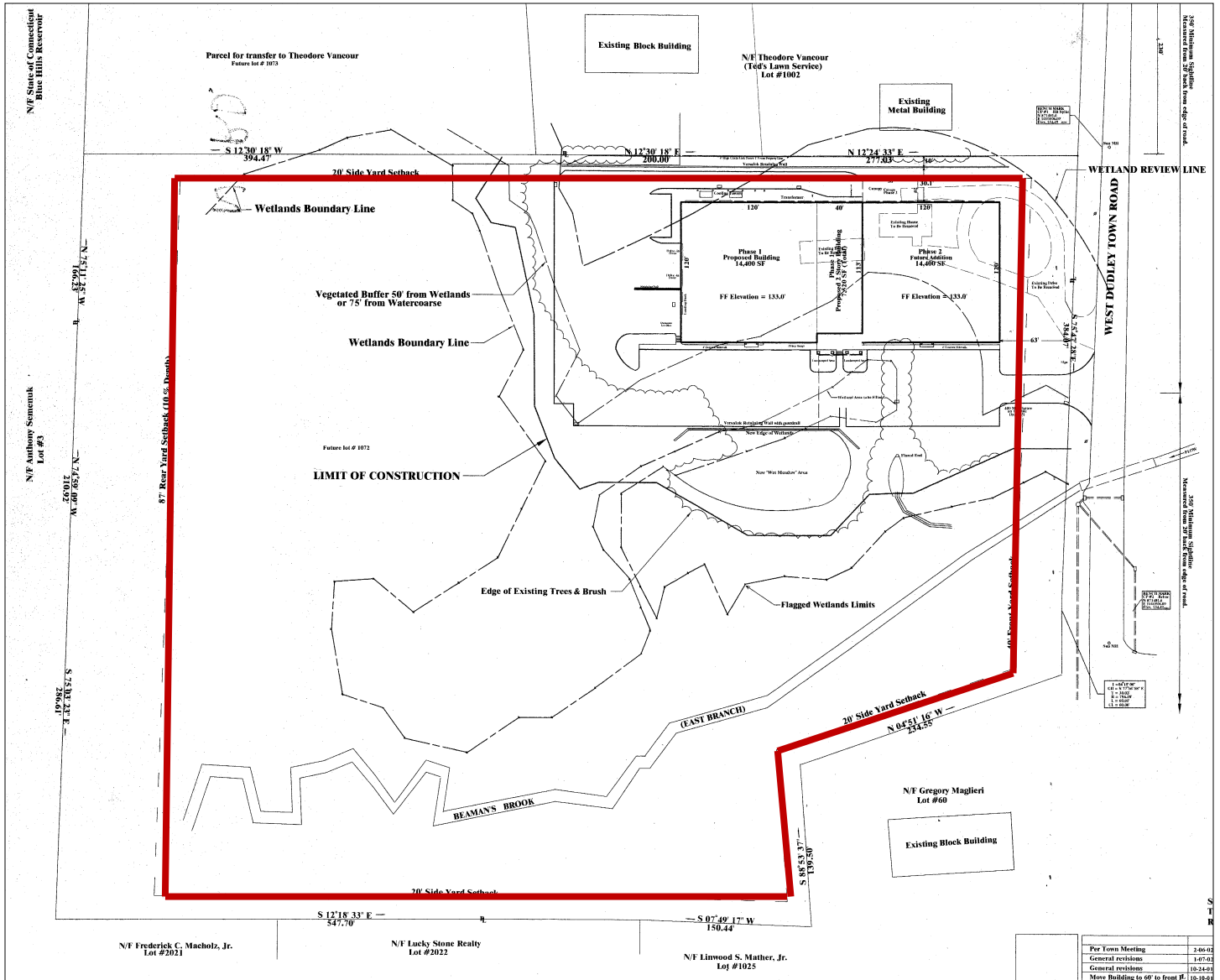
2.75 DEVELOPABLE ACRES (11.7 TOTAL)

Sentry Commercial is pleased to offer 43 West Dudley Town Road, Bloomfield for sale.

Larry Levere, SIOR
860.690.0447
levere@sentrycommercial.com

- Full utilities in street
- Level topography
- Located at the end of Old Windsor Road
- I-2 zone - Restricted Industry

43 WEST DUDLEY TOWN ROAD, BLOOMFIELD CT



LAND

Acres: 11.7
 Total Frontage: 444'
 Zoning: I-2
 Topography: Flat
 Impervious Coverage: 22%

TAXES

Taxes: \$4,196.99
 Assessment: \$111,860
 Year Assessed: 2017
 Mill Rate: 37.52

UTILITIES

Water: City
 Gas: Yes
 Sewer: City

SALE PRICE

\$150,000



190 Trumbull St. Hartford, CT 06103
 860.528.0884

SENTRYCOMMERCIAL.COM