

# 32 EAST EXCHANGE PLACE

Salt Lake City, Utah 84111



## \$28.00/RSF FULL SERVICE

# FOR LEASE

## PROPERTY FEATURES

- 3,758 RSF to 42,522 RSF Contiguous Available
- Possibility to Lease Smoke Stack Signage for a Tenant that leases 4th, 5th and 6th floor. – Subject to City Approval
- Direct Access to TRAX
- Meeting Event Space for 8–350 People  
Contact: [info@commercialclubslc.com](mailto:info@commercialclubslc.com)
- Square Feet To Be Verified

FOR MORE  
INFORMATION  
CONTACT

**DEREK SAWAYA**  
801.746.4730  
[derek.sawaya@ngkf.com](mailto:derek.sawaya@ngkf.com)

**CASEY MILLS, CCIM**  
801.578.5556  
[casey.mills@ngkf.com](mailto:casey.mills@ngkf.com)

**COLLIN PERKINS, MBA**  
801.578.5575  
[collin.perkins@ngkf.com](mailto:collin.perkins@ngkf.com)



376 East 400 South, Suite 120 | Salt Lake City, Utah 84111 | 801.578.5555 | [www.ngacres.com](http://www.ngacres.com)

This document has been prepared by Newmark Knight Frank for advertising and general information purposes only. While the information contained herein has been obtained from what are believed to be reliable sources, the same has not been verified for accuracy or completeness. Newmark Knight Frank accepts no responsibility or liability for the information contained in this document. Any interested party should conduct an independent investigation to verify the information contained herein.

# 32 EAST EXCHANGE PLACE

Salt Lake City, Utah 84111

## EVENT SPACE

Contact: [info@commercialclubslc.com](mailto:info@commercialclubslc.com)



## SIGNAGE

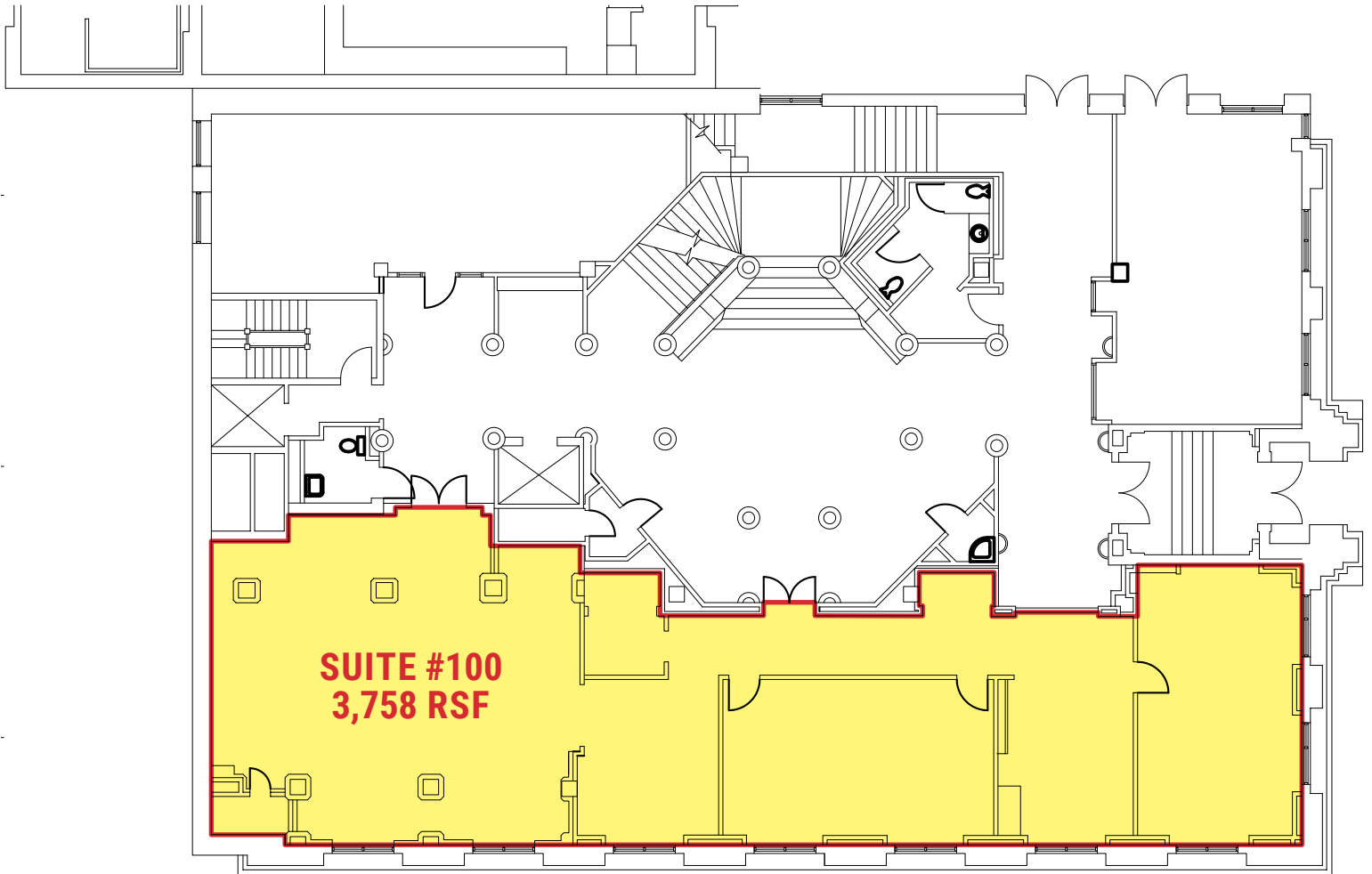
Click [HERE](#) for More Information



**SIGNAGE FACES 400 SOUTH**  
33,000 Cars/Day

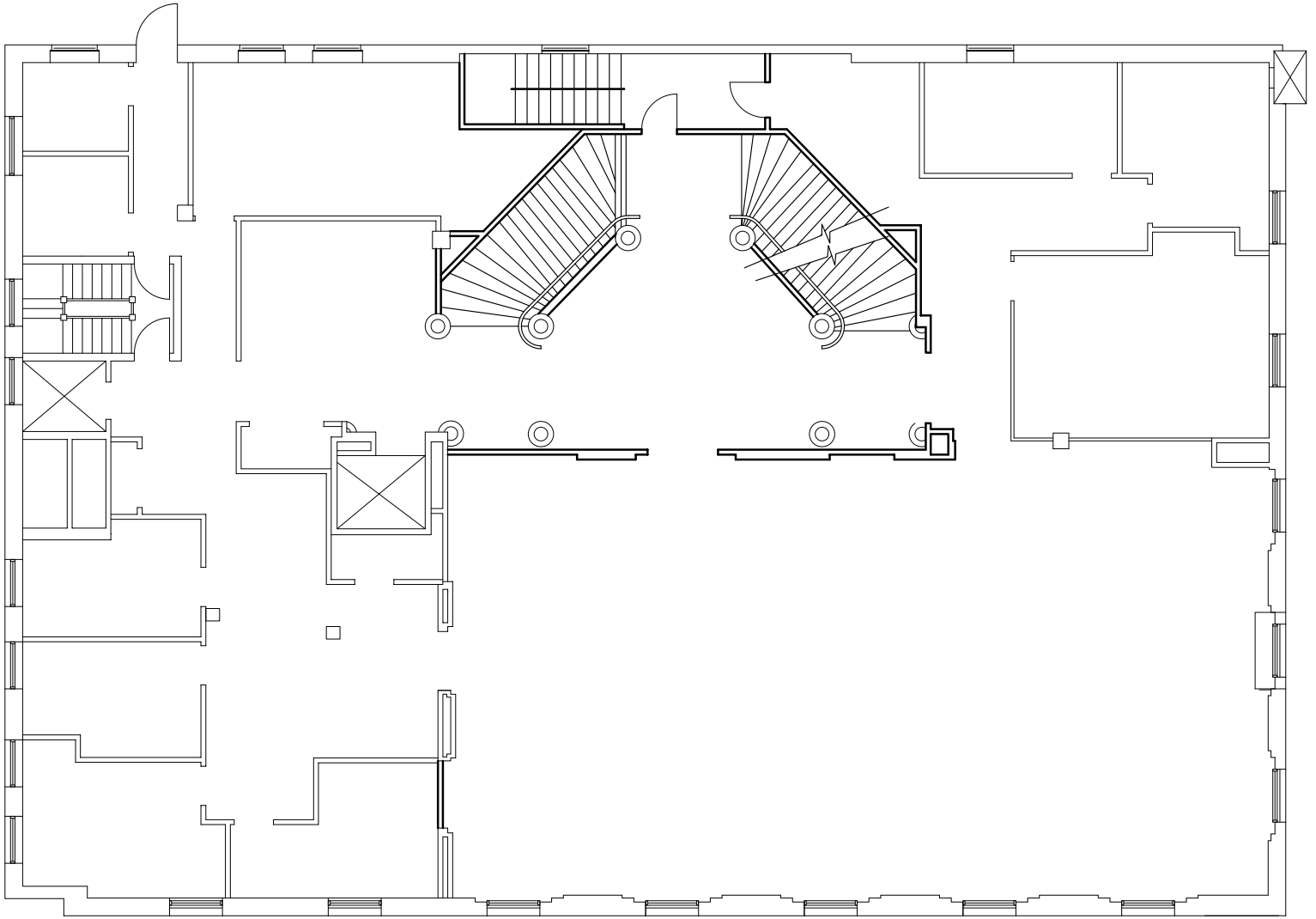


# FIRST FLOOR



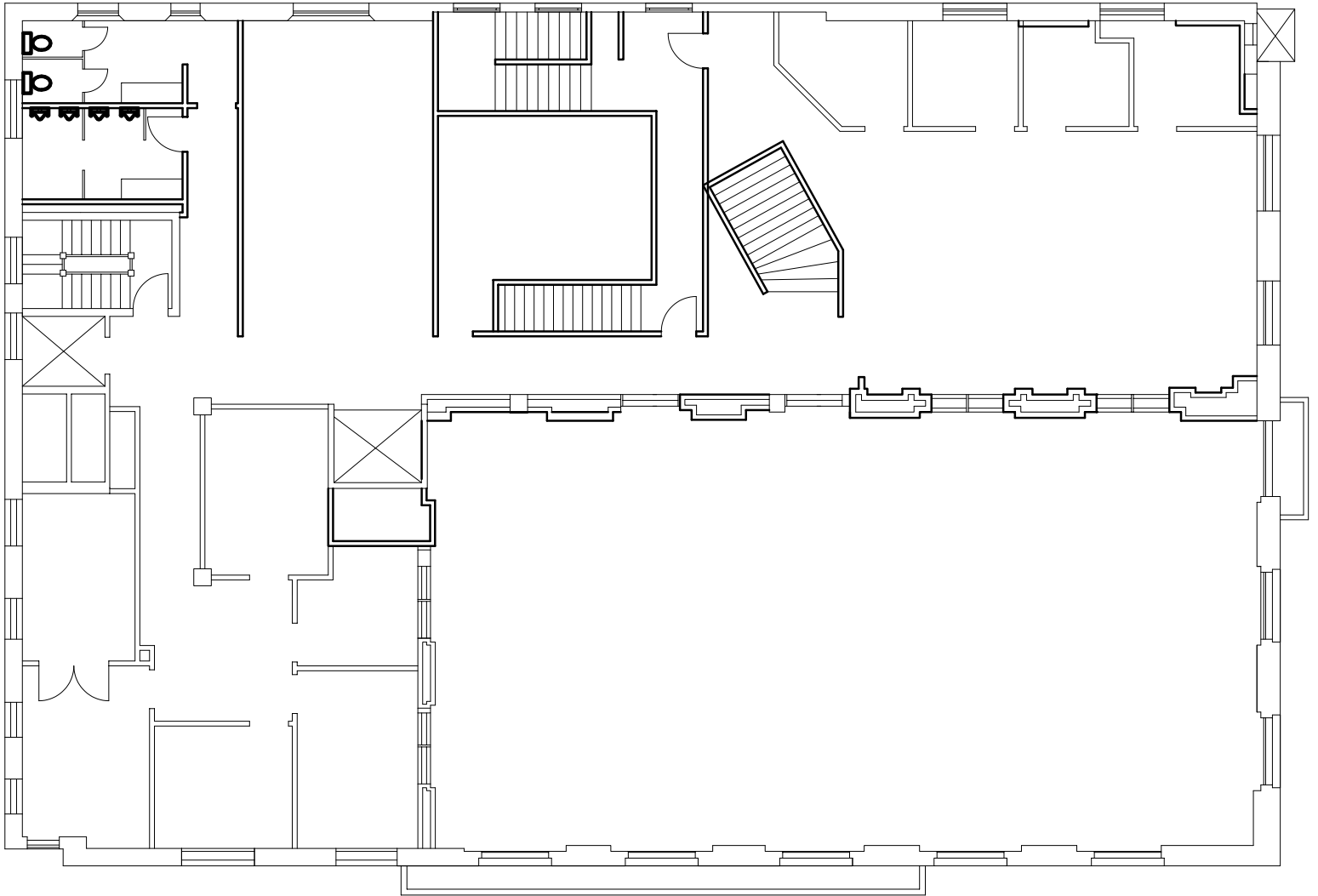
# SECOND FLOOR

8,913 RSF



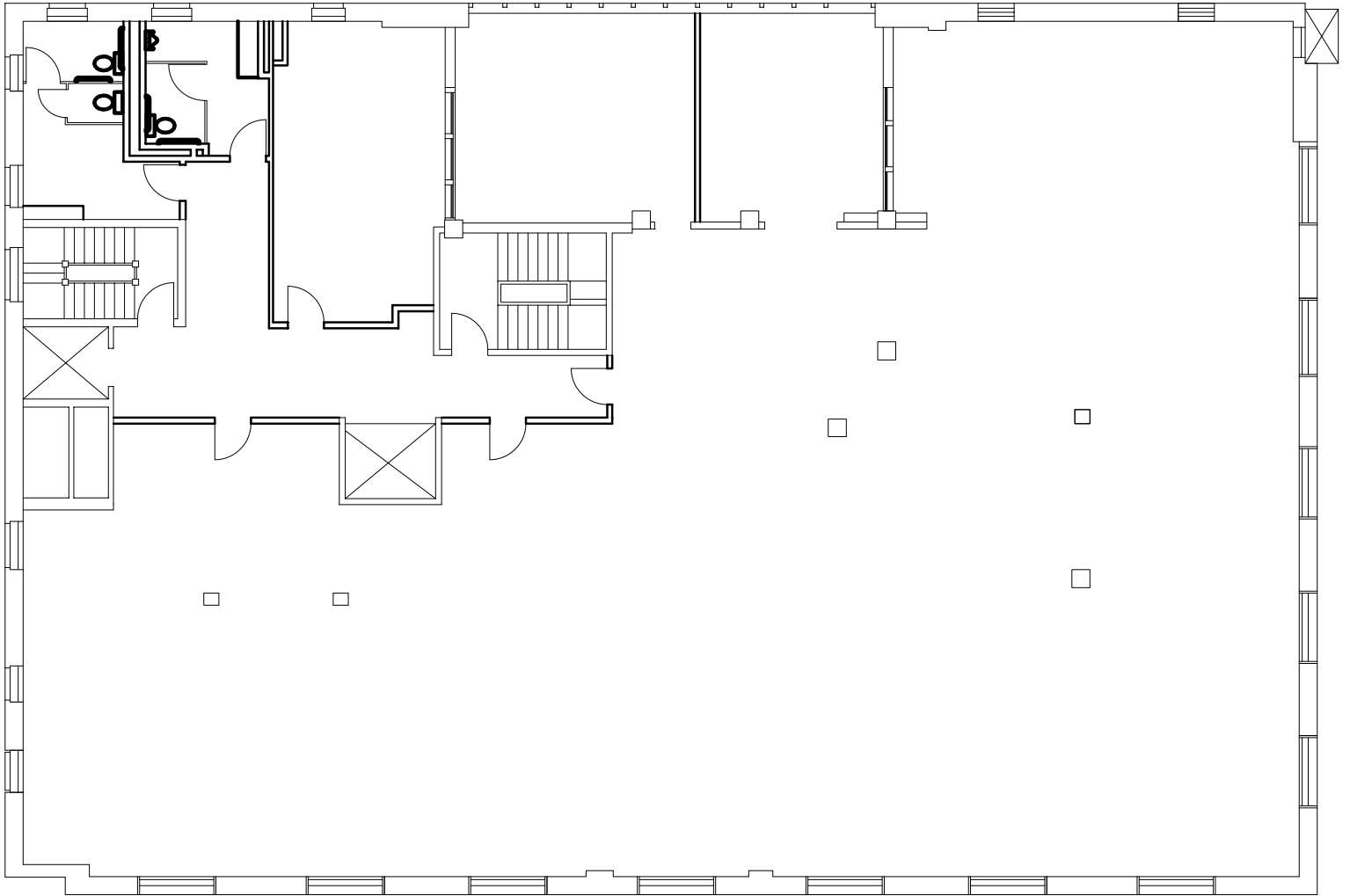
# THIRD FLOOR

6,160 RSF



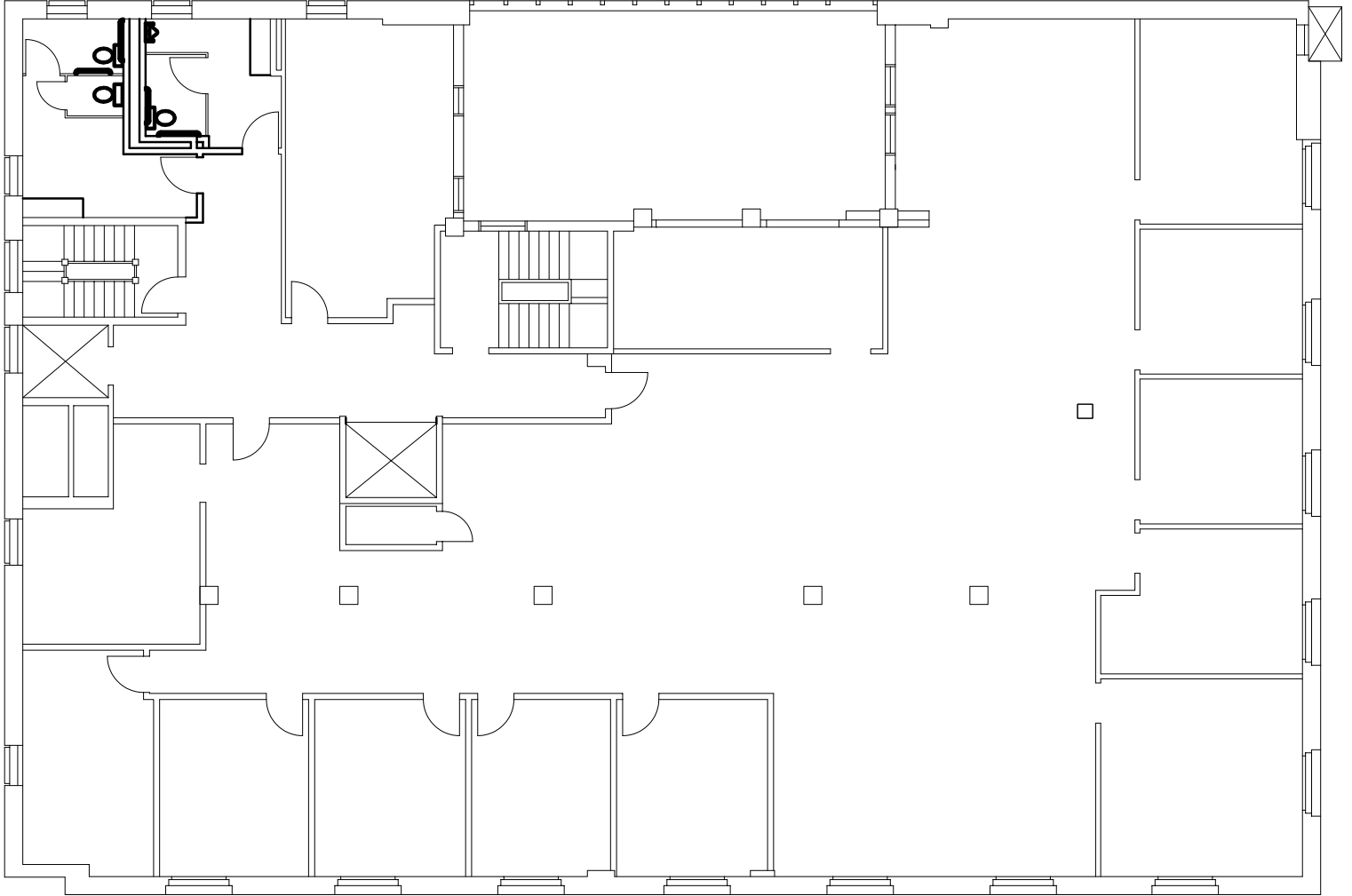
# FOURTH FLOOR

8,412 RSF – 10'7" inches slab to ceiling (excluding structural beams)



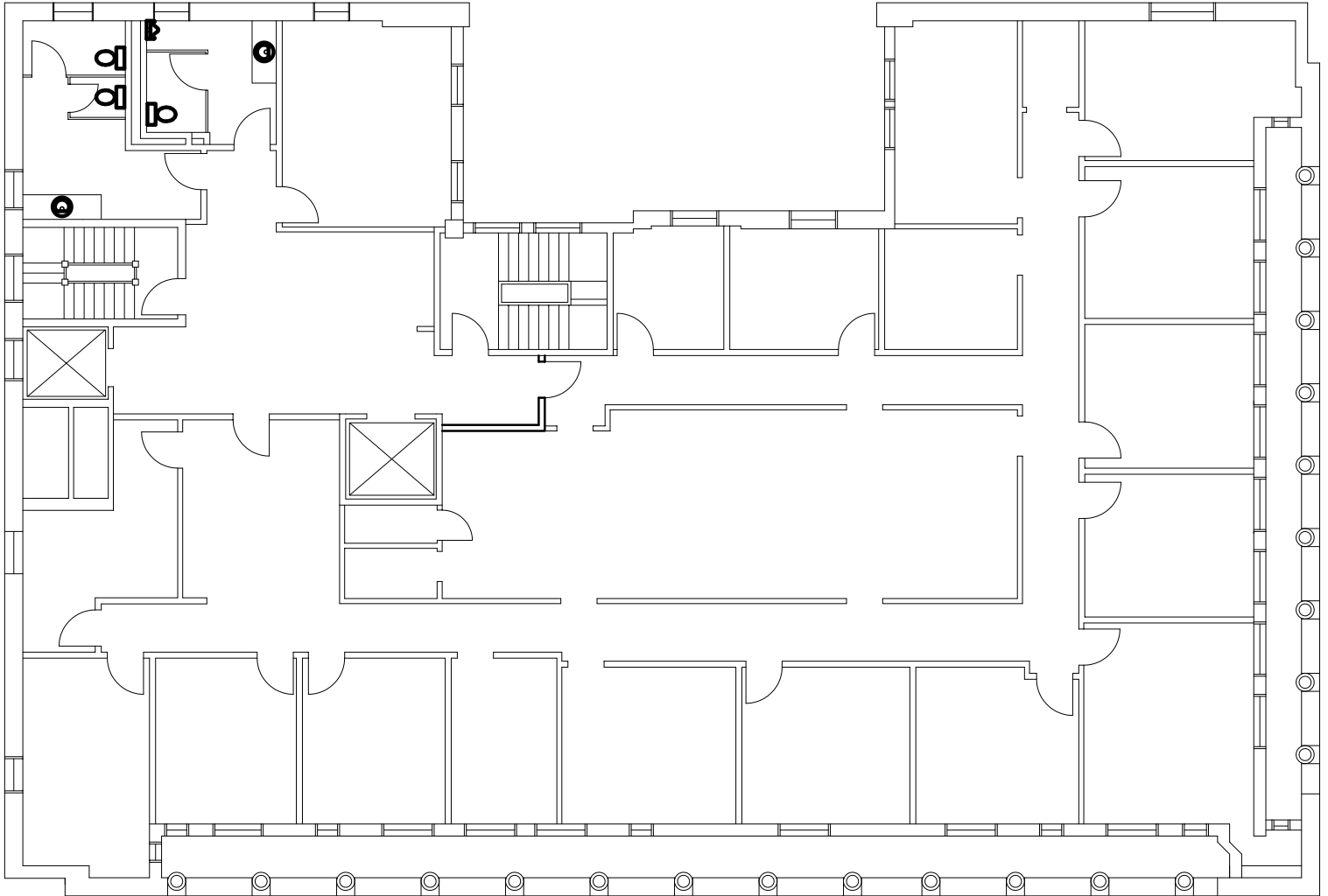
# FIFTH FLOOR

8,415 RSF – 10'7" inches slab to ceiling (excluding structural beams)



# SIXTH FLOOR

6,864 RSF – 12'4" inches slab to ceiling (excluding structural beams)





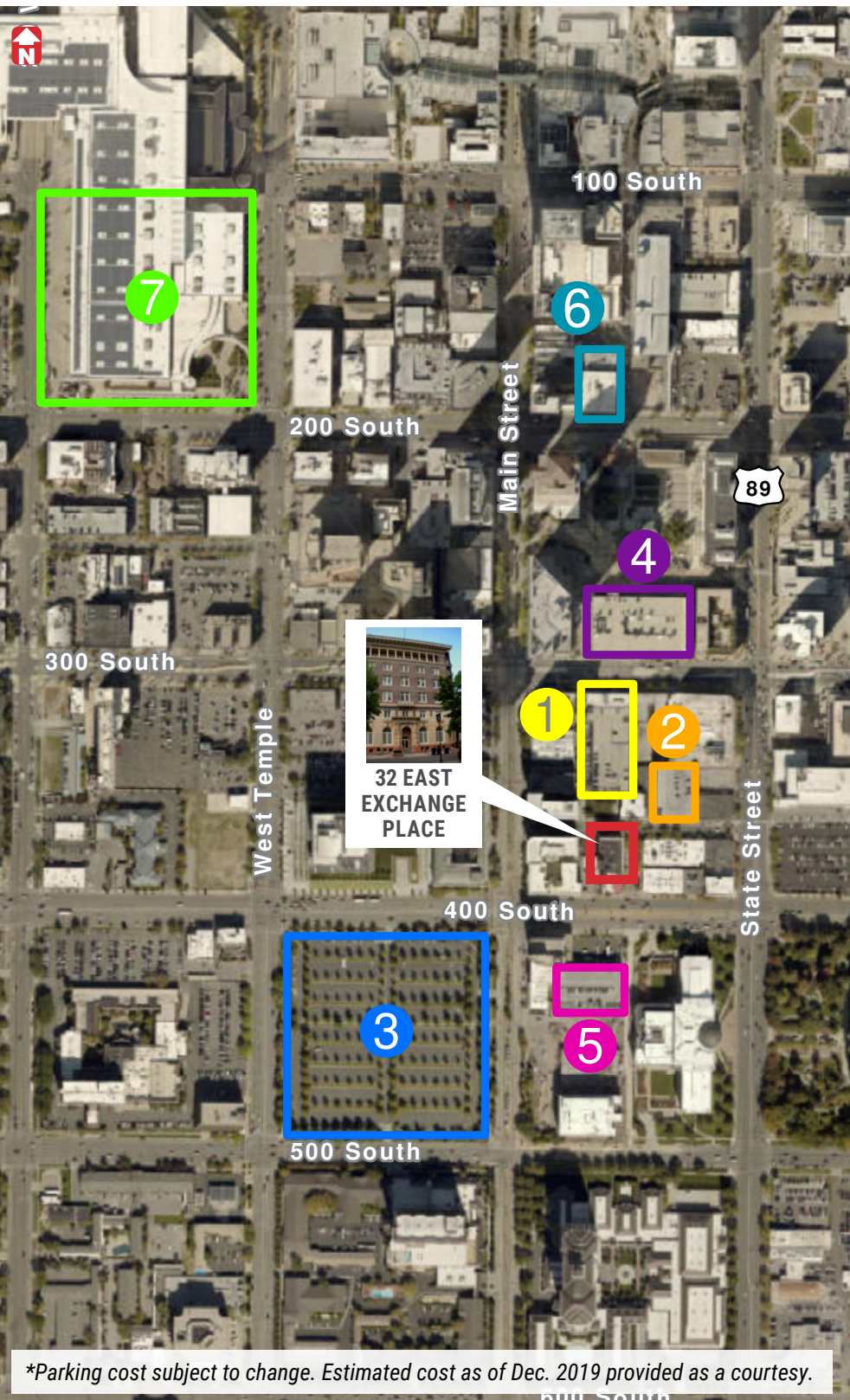
# 32 EAST EXCHANGE PLACE

Salt Lake City, Utah 84111

## PARKING OPTIONS

Rates stated per month except where indicated

- 1 Exchange Place (45 E. Broadway)**  
Unreserved - \$100 / Reserved - \$135
- 2 324 South State**  
Unreserved - \$105  
Reserved - \$140 +\$20 Keycard
- 3 4th South Lot**  
\$8 Daily Rate
- 4 Wells Fargo Center**  
Unreserved - \$110 / Reserved - \$160
- 5 Ken Garff Building**  
Daily - \$14 / Unreserved - \$85
- 6 Walker Center**  
Unreserved - \$105 / Daily - \$15
- 7 Salt Palace**  
\$12-14 Daily



\*Parking cost subject to change. Estimated cost as of Dec. 2019 provided as a courtesy.

# 32 EAST EXCHANGE PLACE

Salt Lake City, Utah 84111

