



FOR LEASE

**1775 Prospector Avenue**  
Park City, Utah



## Property Highlights

- First Floor - Restaurant/Retail  
2,548 SF  
\$32/SF NNN
- Second Floor - Office  
2,468 SF  
\$26/SF NNN
- Third Floor - Office  
2,468 SF  
\$26/SF NNN
- Walking distance to shops, restaurants
- Adjacent to 26 mile, non-motorized Rail Trail for year round outdoor enjoyment
- On free bus route
- Ample parking
- Close proximity to Park City's proposed Arts and Culture District
- Tenant improvement allowance offered

### **Katie Wilking**

Director

+1 435 640 4964

katie.wilking@cushwake.com

1794 Olympic Parkway, Suite 130

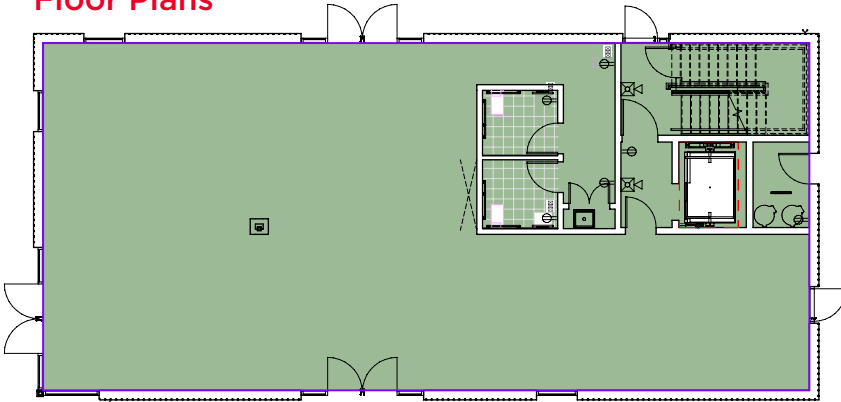
Park City, Utah 84098

Main +1 435 575 5600

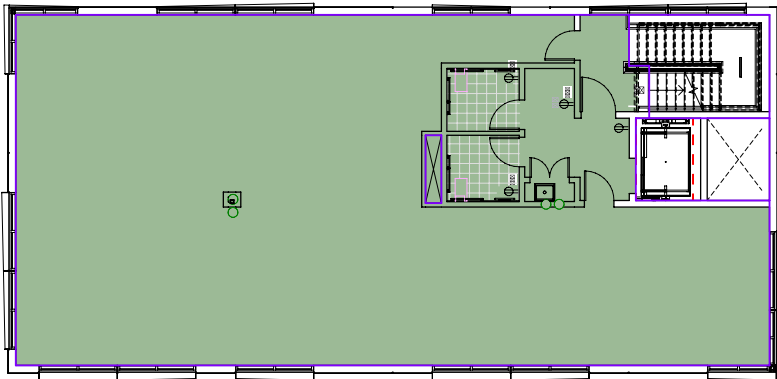
Fax +1 435 575 5640

**cushmanwakefield.com**

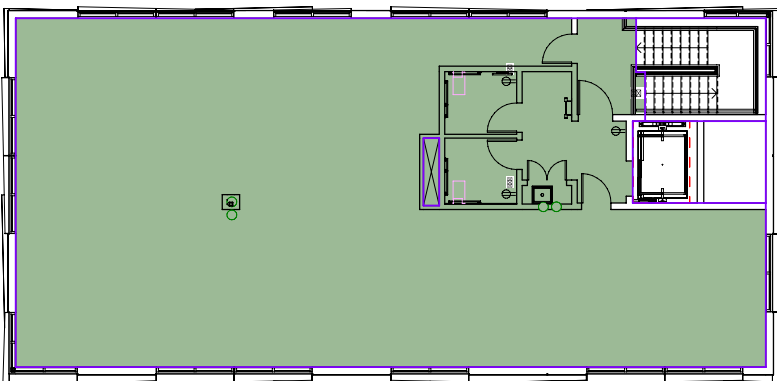
**Floor Plans**



**Level 1 - 2,548 SF**



**Level 2 - 2,468 SF**



**Level 3 - 2,468 SF**



**Katie Wilking**  
Director  
+1 435 640 4964  
katie.wilking@cushwake.com

1794 Olympic Parkway, Suite 130  
Park City, Utah 84098  
Main +1 435 575 5600  
Fax +1 435 575 5640  
**cushmanwakefield.com**