

# CLASS A OFFICE SUBLEASE CANAL CENTRE

400 E LAS COLINAS | IRVING, TEXAS 75039



## SUBLEASE INFORMATION:

- Size - 1,635 SF
- Expiration - November 30, 2021
- Rate - \$21.75 SF +E
- Electric - \$1.39 SF
- Garage parking spaces at no charge
- Furniture negotiable
- Up to 5,852 continuous SF
- Outstanding views
- Sublessor open to sharing server and kitchen room

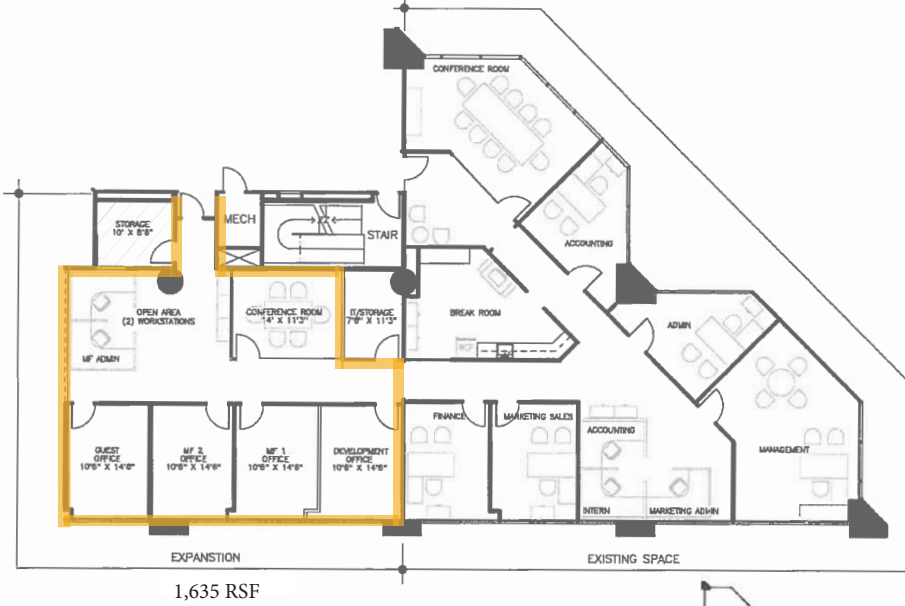
**CONTACT**  
**NORA HOGAN, CCIM, SIOR**  
**PRINCIPAL**  
 214.446.4509  
 nora.hogan@transwestern.com

**JORDAN WADE**  
**VICE PRESIDENT**  
 214.446.4531  
 jordan.wade@transwestern.com



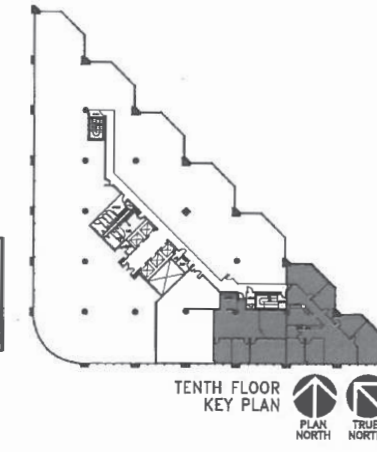
## FLOOR PLAN

Appendix 2 1st CanalCentre Crescent.doc



Sublease Space, Tenant willing to demise or share kitchen. Great views

**ALICIA McDONALD**  
 TEXAS REGISTERED INTERIOR DESIGNER  
 TBAE REGISTRATION NO. 9820  
 02-21-14  
 NOT TO BE USED FOR  
 REGULATORY APPROVAL,  
 PERMIT OR CONSTRUCTION.



**INTERPRISE**  
 Douglas, Houston, Dallas

**CANAL CENTRE**

400 E LAS COLINAS BLVD.  
 IRVING, TX 75039

**JONES LANG LASALLE**

CRESCENT RESOURCES  
 8/16/17

SPACE PLAN #2  
 01-31-14 14'x11'0"

JLD  
 11/17/17

NO. AS SHOWN  
 0808-1005-16

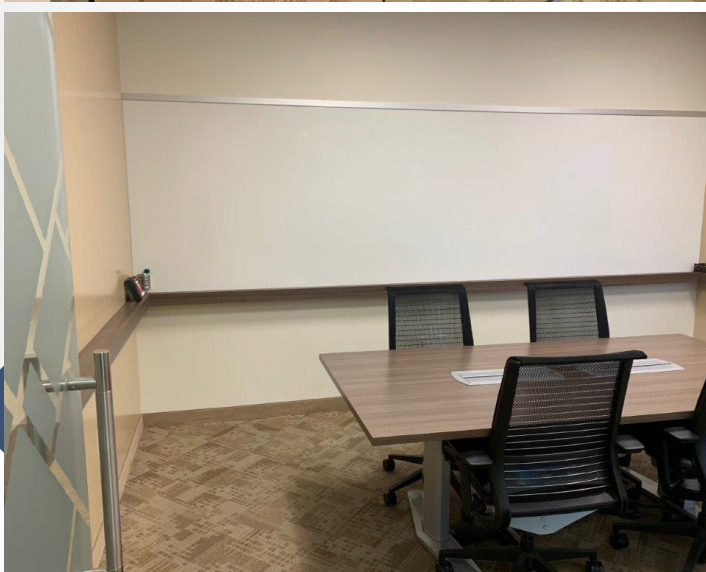
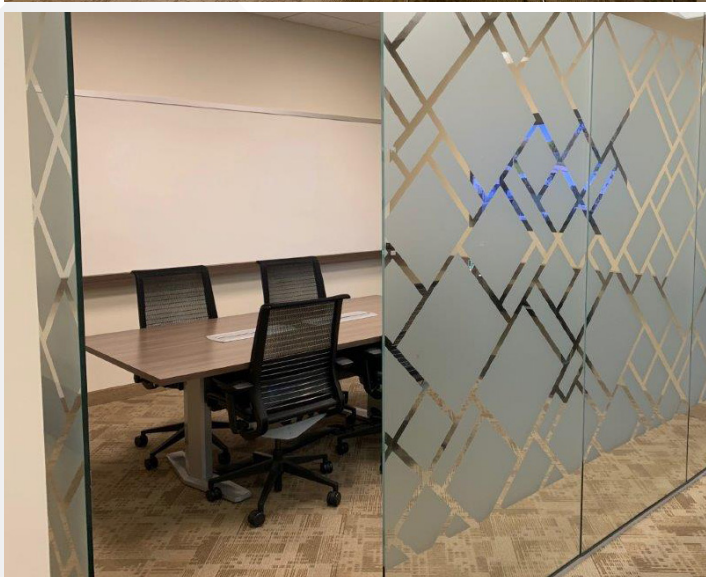
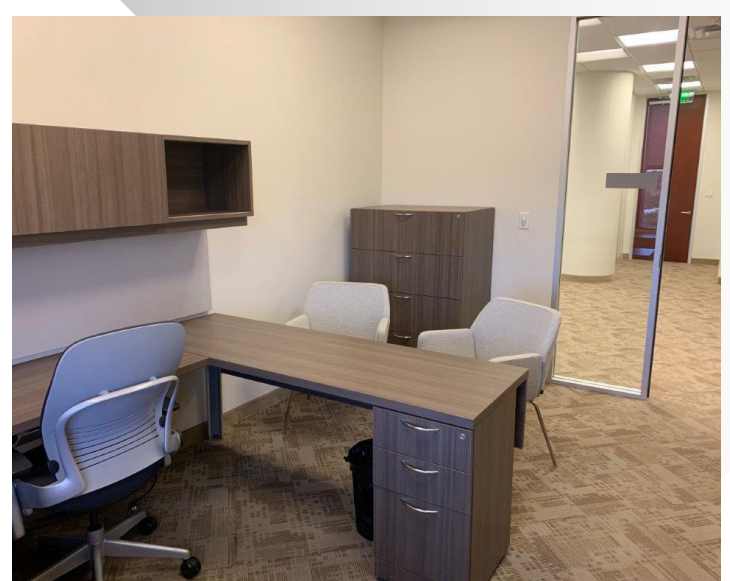
SP#2

6/30/17

TENTH FLOOR  
 KEY PLAN  
 PLAN NORTH  
 TRUE NORTH

Attachment 1 to Exhibit B  
 Space Plan

## PHOTOS



**CONTACT**  
**NORA HOGAN, CCIM, SIOR**  
**PRINCIPAL**  
 214.446.4509  
 nora.hogan@transwestern.com

**JORDAN WADE**  
**VICE PRESIDENT**  
 214.446.4531  
 jordan.wade@transwestern.com

