



Morgan Manor

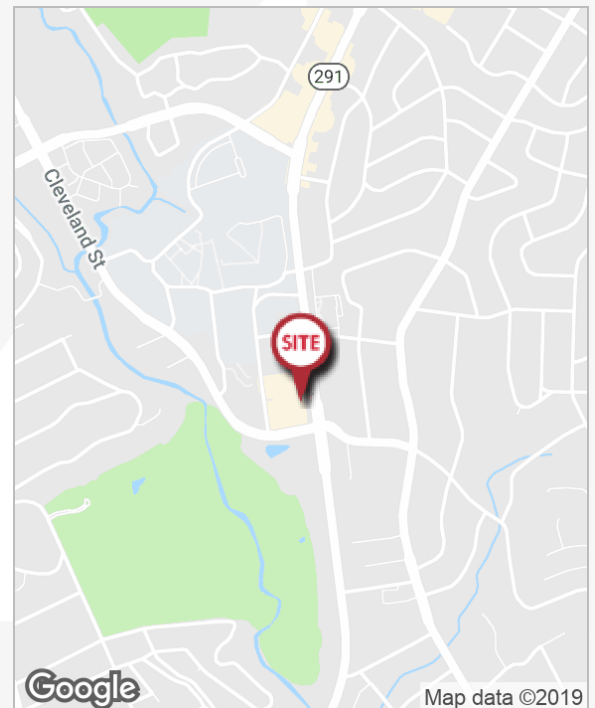
730 S. Pleasantburg Drive
Greenville, South Carolina 29607

Property Highlights

- Recently renovated building facade and parking deck
- Excellent demographics
- Multiple access points
- Plenty of parking with indoor garage
- Conveniently located at the intersection of Cleveland Street and S. Pleasantburg Drive
- Retail spaces: \$12.00/SF Modified Gross
- Office spaces: \$11.50/SF Modified Gross (including utilities)
- Small office space: \$12.50/SF Gross (including electric and janitorial)

Demographics

	1 Mile	3 Miles	5 Miles
Total Population	5,284	48,767	136,666
Average HH Income	\$86,377	\$71,770	\$59,863
Daytime Employees	3,216	85,806	157,217



For more information

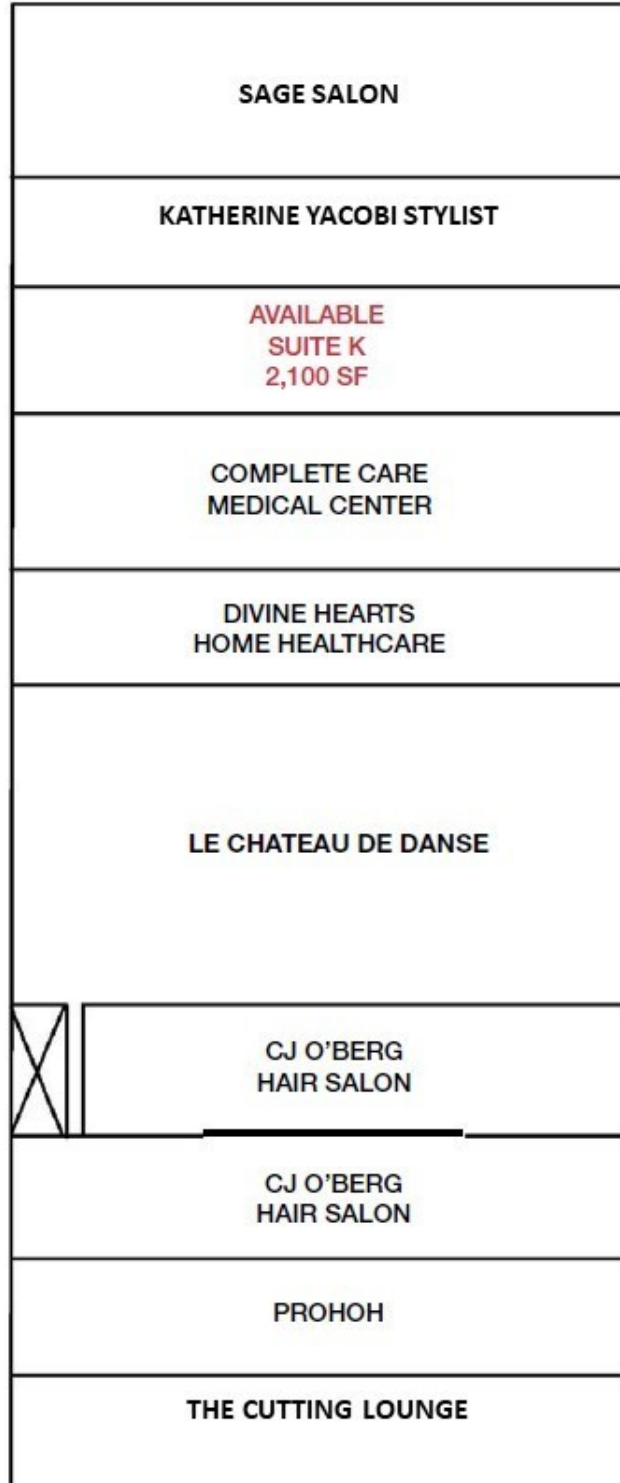
Ted Lyerly, CCIM

O: 864 678 5939
ted@naiearlefurman.com

Shannon Caldwell

O: 864 884 2280
scaldwell@naiearlefurman.com

Retail Space



Office Space

