



THALHIMER

OFFICE FOR LEASE
9102 Rutland Greens Way
Rutland Center | Hanover County, Virginia

1,535 SF AVAILABLE



Second Generation Office Condo with High-End Finishes

For more information, contact:

AMY BRODERICK

Vice President

804 344 7189

amy.broderick@thalhimer.com

BAKER LYNN

Associate

804 697 3464

baker.lynn@thalhimer.com

Thalhimer Center
11100 W. Broad Street
Glen Allen, VA 23060
www.thalhimer.com

Independently Owned and Operated / A Member of the Cushman & Wakefield Alliance

Cushman & Wakefield | Thalhimer © 2015. No warranty or representation, express or implied, is made to the accuracy or completeness of the information contained herein, and same is submitted subject to errors, omissions, change of price, rental or other conditions, withdrawal without notice, and to any special listing conditions imposed by the property owner(s). As applicable, we make no representation as to the condition of the property (or properties) in question.

Property Features

- 1,535 SF AVAILABLE
- Second generation office condo with high end finishes
- Building & monument signage available
- Located in Rutland Center at Route 301 & Atlee Road with immediate access to I-295
- Thriving mixed-use community includes YMCA, Kroger, restaurants & more



For more information, contact:

AMY BRODERICK
 Vice President
 804 344 7189
amy.broderick@thalhimer.com

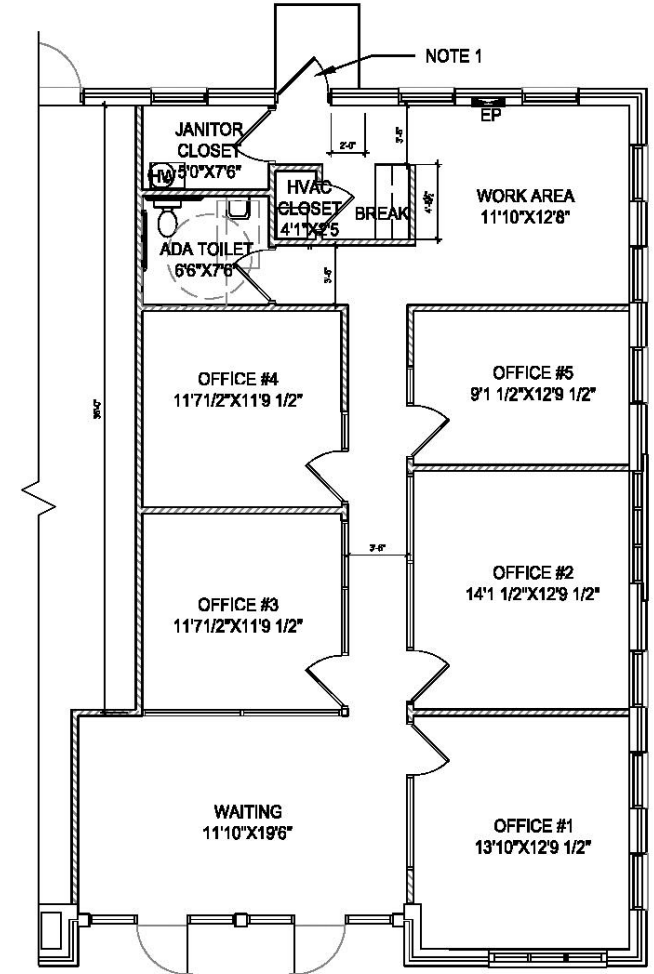
BAKER LYNN
 Associate
 804 697 3464
baker.lynn@thalhimer.com

Thalhimer Center
 11100 W. Broad Street
 Glen Allen, VA 23060
www.thalhimer.com



THALHIMER

OFFICE FOR LEASE
9102 Rutland Greens Way
Rutland Center | Hanover County, Virginia



For more information, contact:

AMY BRODERICK

Vice President
804 344 7189
amy.broderick@thalhimer.com

BAKER LYNN

Associate
804 697 3464
baker.lynn@thalhimer.com

Thalhimer Center
11100 W. Broad Street
Glen Allen, VA 23060
www.thalhimer.com

Independently Owned and Operated / A Member of the Cushman & Wakefield Alliance

Cushman & Wakefield | Thalhimer © 2015. No warranty or representation, express or implied, is made to the accuracy or completeness of the information contained herein, and same is submitted subject to errors, omissions, change of price, rental or other conditions, withdrawal without notice, and to any special listing conditions imposed by the property owner(s). As applicable, we make no representation as to the condition of the property (or properties) in question.