

FOR LEASE

ORCHARDS EXECUTIVE PARK
22630-22670 HAGGERTY RD.
FARMINGTON HILLS, MI 48335



PROPERTY FEATURES:

- 7,357 SF and 24,202 SF suites available
- All brick construction, with modern reflective glass
- Centrally located on Haggerty between 9 Mile and 10 Mile Roads
- Quick access to I-275, M-5, I-696 and M-14
- Building signage available that is visible from I-275
- Aggressive rates and terms
- Independent suite entries
- Stable, local ownership and management
- Safe & healthy work environment with Covid -19 protocols in place



FOR MORE INFORMATION PLEASE CONTACT:

TODD HAWLEY
todd.hawley@freg.com

MARC HAMES
marc.hames@freg.com

ROBERT GAGNIUK
robert.gagniuk@freg.com

248.324.2000

eCODE 35

FOR LEASE

ORCHARDS EXECUTIVE PARK
22630-22670 HAGGERTY RD.
FARMINGTON HILLS, MI 48335



AVAILABLE SUITES

| SPACE | LEASE RATE | LEASE TYPE | SIZE (SF) | TERM |
|-------------------------|---------------|------------|-----------|------------|
| Suite 22670 - 100 | \$12.50 SF/yr | NNN | 16,845 SF | Negotiable |
| Suite 22670 - 110 | \$12.50 SF/yr | NNN | 7,357 SF | Negotiable |
| Suite 22670 - 100 + 110 | \$12.50 SF/yr | NNN | 24,202 SF | Negotiable |

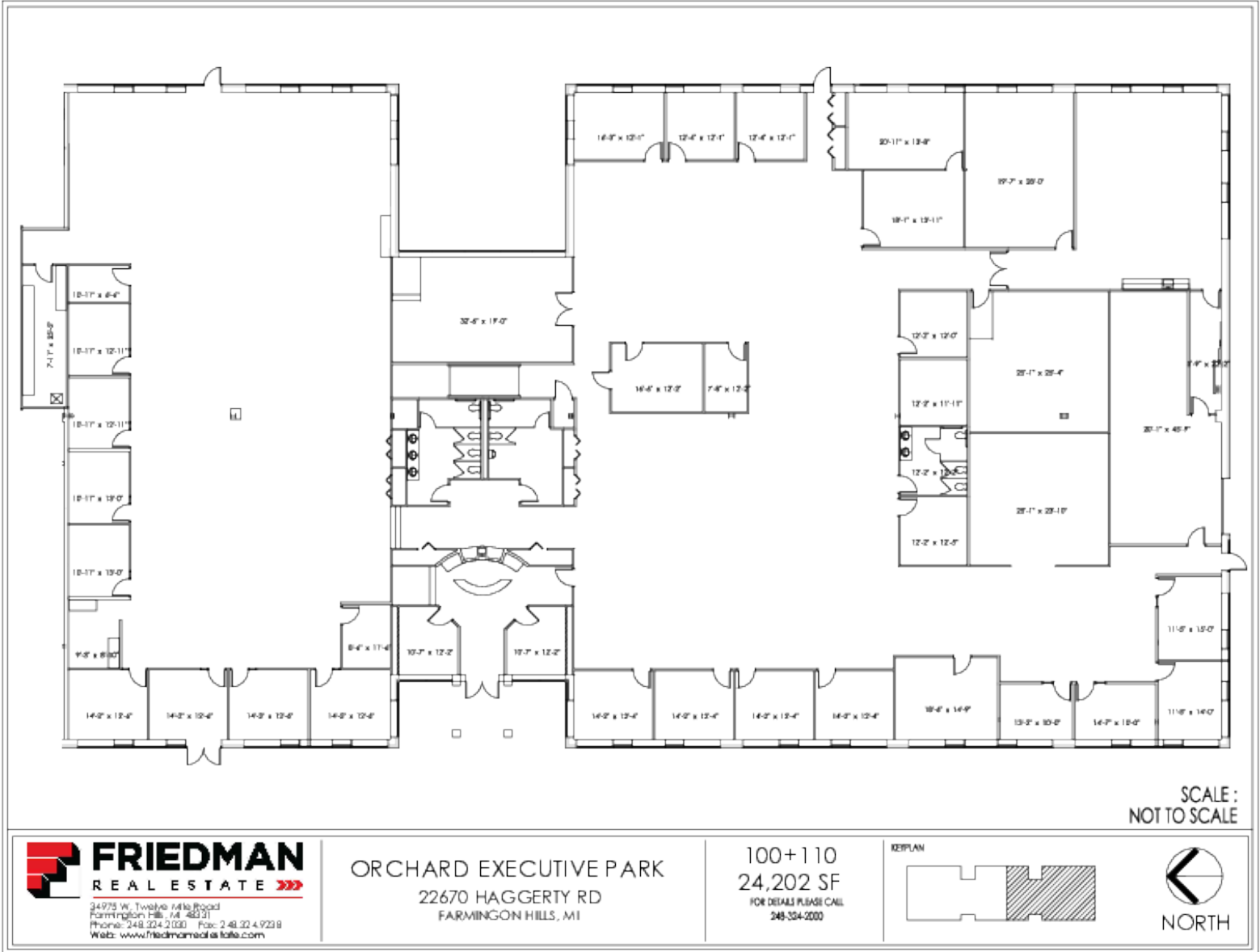
FOR MORE INFORMATION PLEASE CONTACT:

TODD HAWLEY todd.hawley@freg.com
MARC HAMES marc.hames@freg.com
ROBERT GAGNIUK robert.gagniuk@freg.com

248.324.2000
eCODE 35

FOR LEASE

ORCHARDS EXECUTIVE PARK
22630-22670 HAGGERTY RD.
FARMINGTON HILLS, MI 48335



FOR MORE INFORMATION PLEASE CONTACT:

TODD HAWLEY todd.hawley@freg.com
MARC HAMES marc.hames@freg.com
ROBERT GAGNIUK robert.gagniuk@freg.com

248.324.2000
eCODE 35