

7,810 SF OFFICE / WAREHOUSE / SERVICE CENTER

AVAILABLE FOR LEASE

1849-1897 CRAIG ROAD | SAINT LOUIS, MISSOURI 63146



7,810 SF Office / Warehouse / Service Center

- 1849-1851 Craig Road
- Newly retrofitted office / warehouse
- Recently renovated common area restrooms
- Two 11'x14' grade-level drive-ins (with access to dock platform)
- 100% air conditioned
- Excellent Craig Road visibility and access
- Located just south of Page Ave near I-270
- Less than five minutes from Creve Coeur and Westport Plaza amenities
- **LEASE RATE: \$7.75 PSF NNN**

For additional information, please contact:

TONY GIARRATANO

tony@hutkin.com

314.708.4922 o.

314.276.2352 m.

BO KEEFER

bkeef@hutkin.com

314.708.1258 o.

314.973.1242 m.

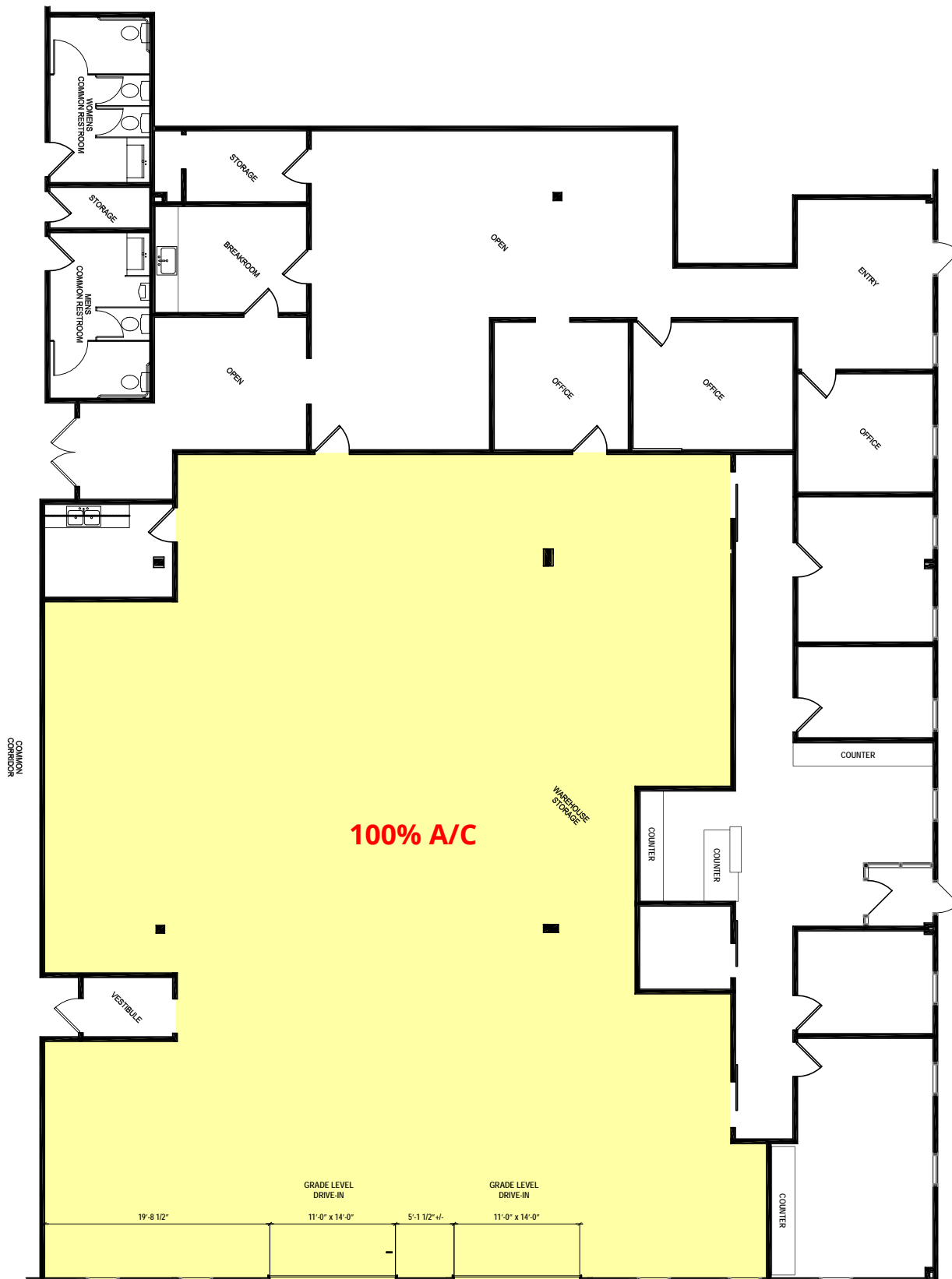
HUTKIN
DEVELOPMENT COMPANY

10829 OLIVE BOULEVARD, SUITE 200
ST. LOUIS, MISSOURI 63141
314.872.9140 PHONE
314.872.9001 FAX
WWW.HUTKIN.COM

7,810 SF OFFICE / WAREHOUSE / SERVICE CENTER

AVAILABLE FOR LEASE

1849-1897 CRAIG ROAD | SAINT LOUIS, MISSOURI 63146



1849-1851 CRAIG ROAD

7,810 SF

7,810 SF OFFICE / WAREHOUSE / SERVICE CENTER

AVAILABLE FOR LEASE

1849-1897 CRAIG ROAD | SAINT LOUIS, MISSOURI 63146

