

Van Doren's West Building C

22714 Russell Road
Kent, WA

148,550 SF available for lease

6,385 SF total office in 2
locations (4,635 SF & 1,750 SF)

2,197 SF production room

25 dock-high doors
2 grade-level doors

24' - 28' clear height

50' x 50' column spacing

ESFR sprinklers

Great access to I-5 via S 228th St

8 pit levelers, 8 EOD levelers,
16 dock seals

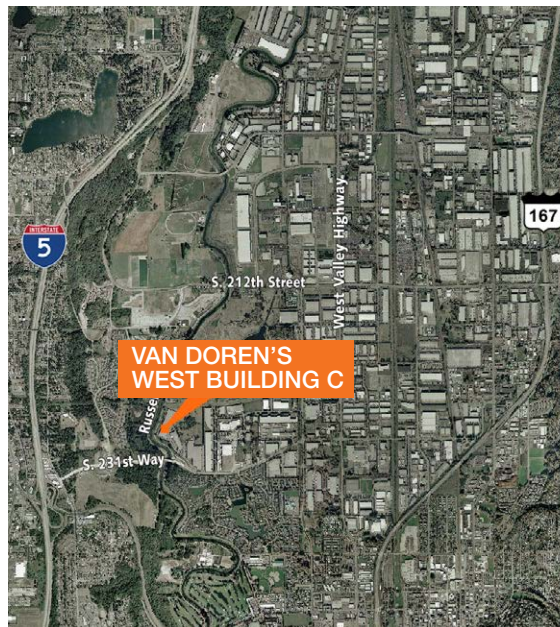
Estimated 3,000 amps of
277/480 volt service
(to be confirmed)

Available 1/1/2017

\$0.48 PSF shell / \$0.85 PSF
office add-on, NNN



www.tiaakentvalley.com



Contact

Doug Klein, SIOR

206.248.7348

dklein@kiddermathews.com

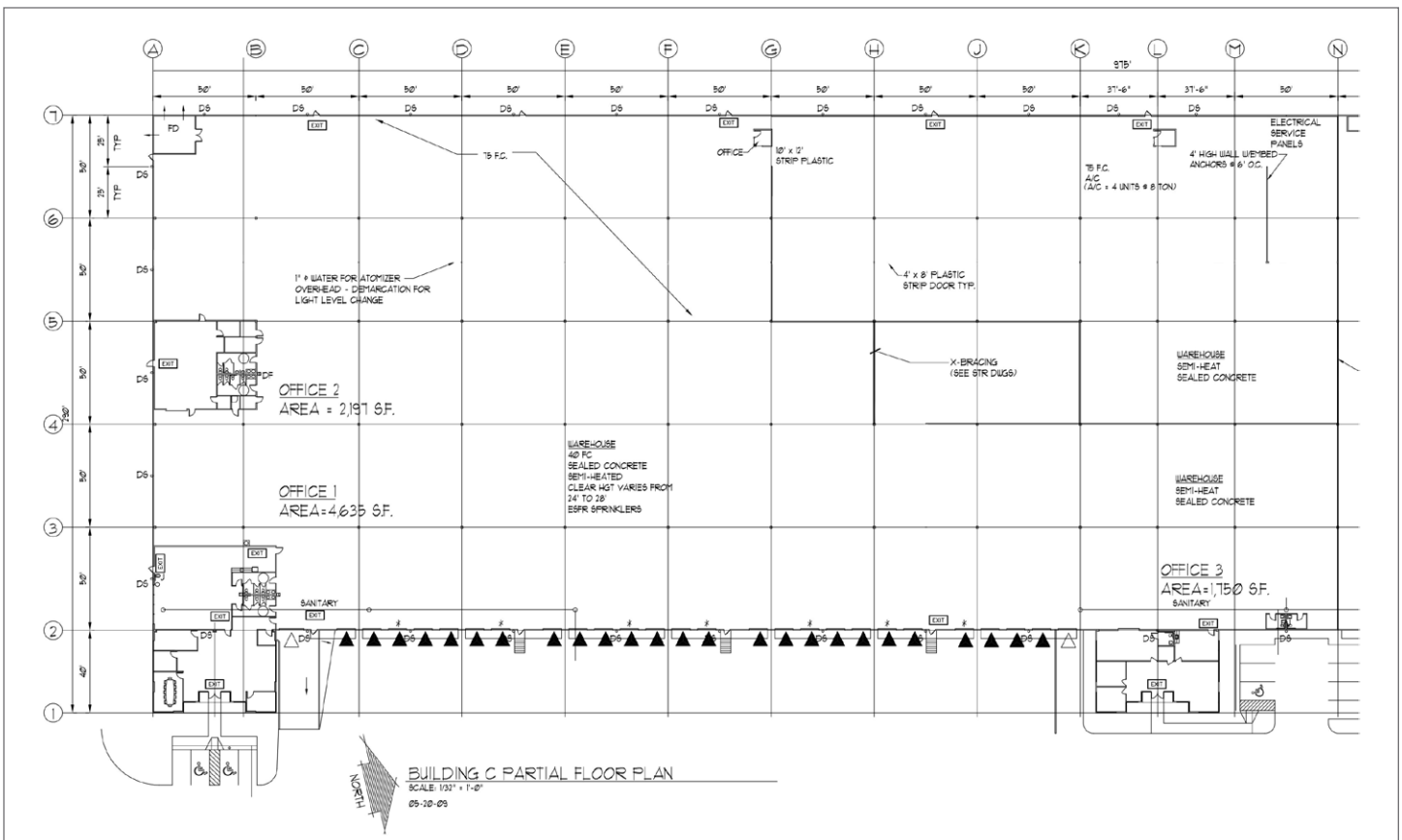
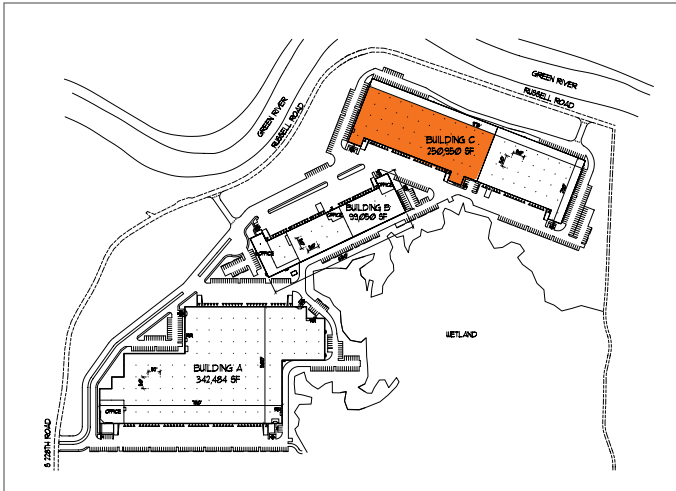
Patricia J. Loveall, SIOR

206.248.7340

ploveall@kiddermathews.com



Van Doren's West, Building C



Contact

Doug Klein, SIOR
 206.248.7348
 dklein@kiddermathews.com

Patricia J. Loveall, SIOR
 206.248.7340
 ploall@kiddermathews.com