

PDM



FITNESS + WELLNESS + CONFERENCE CENTER

NEWMARK

CRUZAN

AVAILABILITY
RENT / SF / MONTH
\$4.50 + E

BUILDING	SUITE	RSF	COMMENTS
12520	135	1,401	Creative Spec Suite with glass garage roll up door. Available
12520	200	1,881	Available
12520	275	1,696	Available
12520	285	1,494	Available 2/1/2024
12526	160	7,528	Suite is contiguous with the slide/ internal staircase. Availble
12526	240	1,958	Available
12526	260	4,800	Suite is contiguous with the slide/ internal staircase. Available

PDM

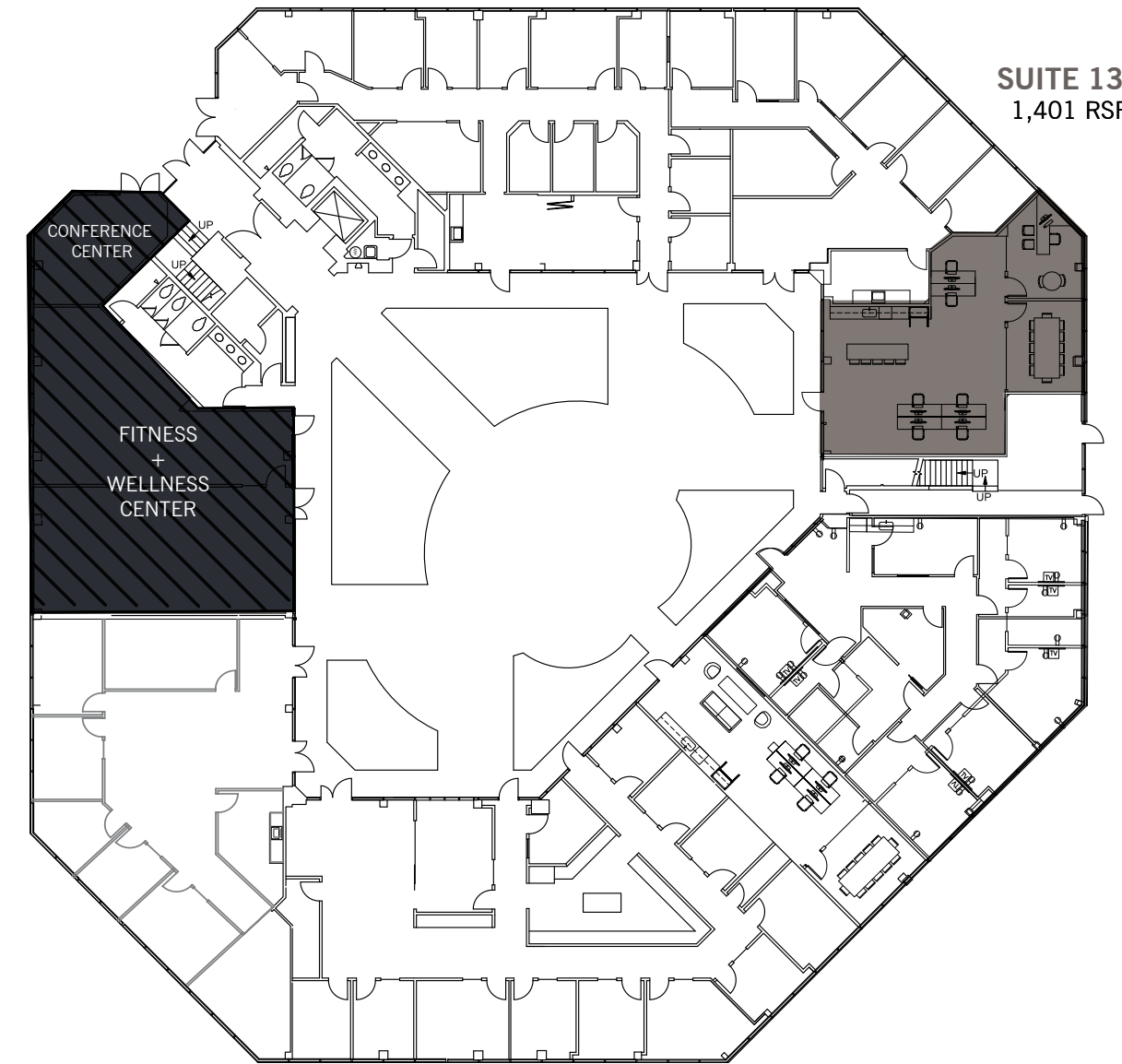
12520 & 12526 HIGH BLUFF DRIVE, SAN DIEGO, CA

PROPERTY FEATURES

- Class A Improvements
- Offering Both Creative & Traditional Office Space
- Atrium Style Architecture | Double the Glass Line
- Resort-style Restrooms & Showers
- Fitness + Wellness Center
- Conference Center
- Extensive Landscape and “Hardscape” Renovations
- Wi-Fi Available in Courtyards
- Reserved Covered Parking
- Close to Retail Amenities, Dining & Lodging
- Located in the heart of Del Mar Heights

PDM

CRUZAN



SUITE 135
1,401 RSF



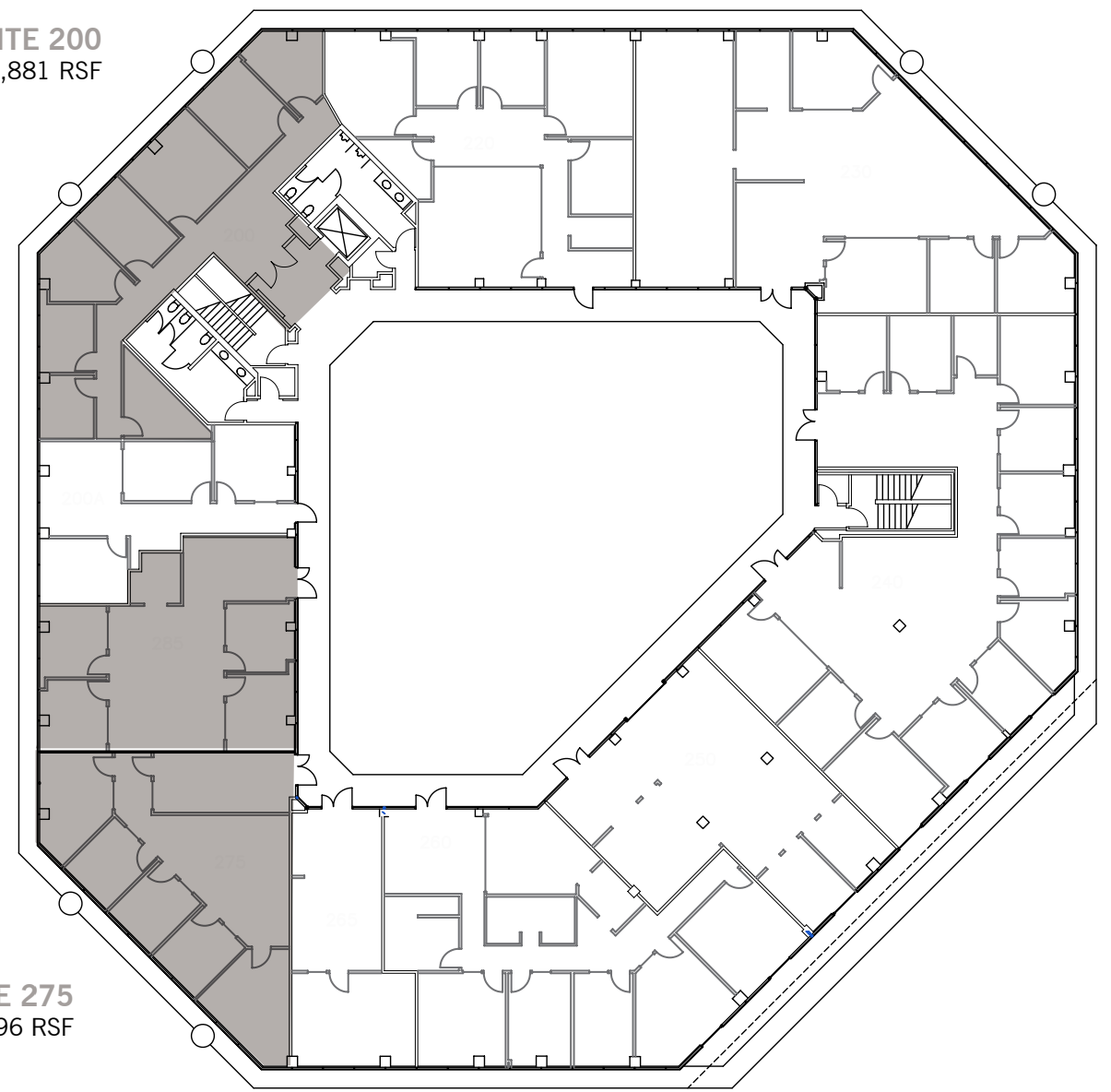
PDM

1 2520 HIGH BLUFF DRIVE | 2ND FLOOR

SUITE 200
1,881 RSF

SUITE 285
1,494 RSF

SUITE 275
1,696 RSF





PDM

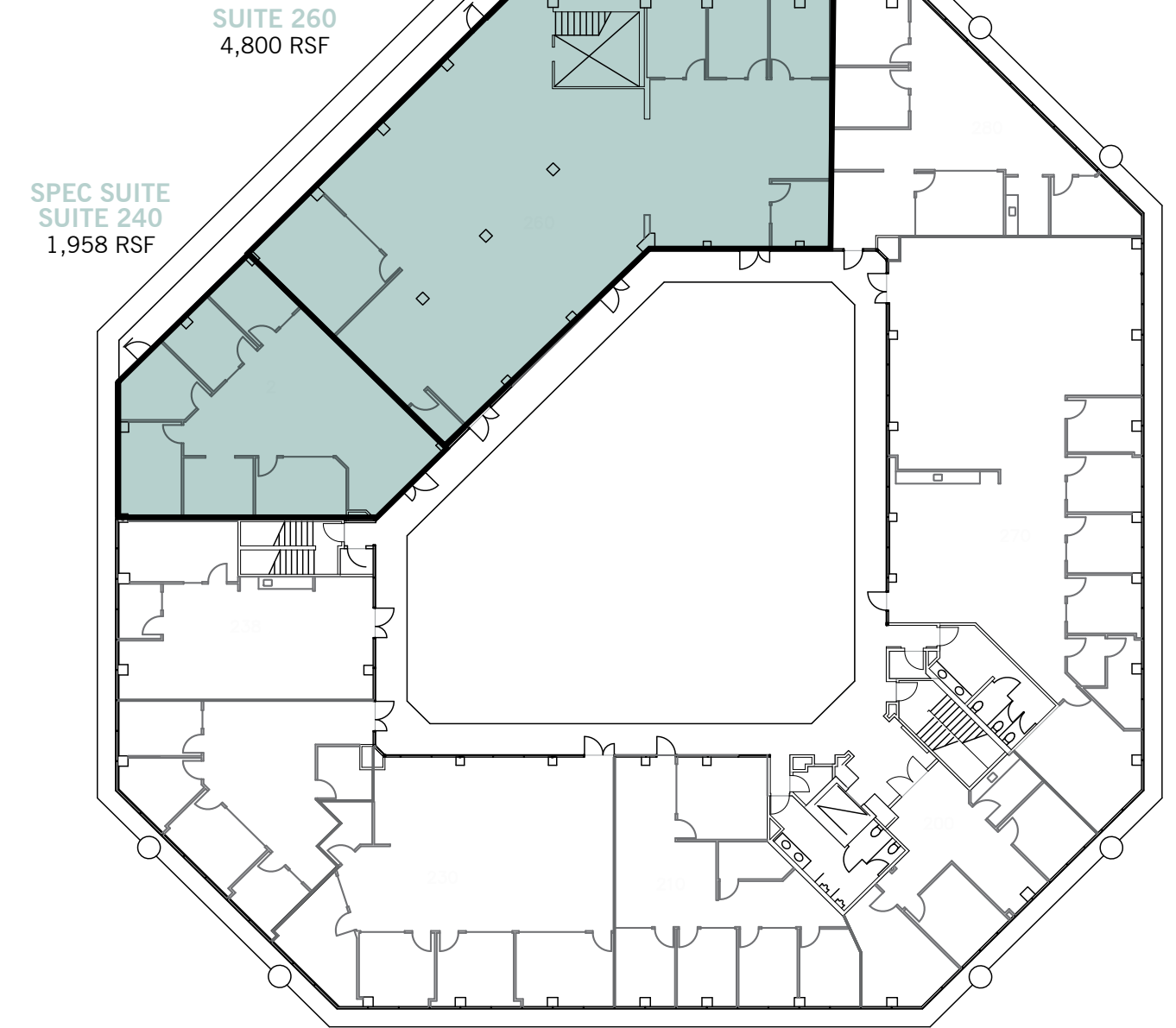
12526 HIGH BLUFF DRIVE | 1ST FLOOR

SUITE 160
7,528 RSF





1 2526 HIGH BLUFF DRIVE | 2ND FLOOR





NEARBY AMENITIES

DEL MAR HIGHLANDS TOWN CENTER

Searsucker
Casa Sol y Mar
Champagne French Café
Cinepolis Luxury Cinemas
Snooze an A.M. Eatery
Urban Plates
Mendocino Farms
Jimbo's...Naturally!
Nekter Juice Bar
Philz Coffee
Davanti Enoteca
Pappalecco
Ralph's
Papyrus
Drybar Del Mar
Sammy's Woodfired Pizza
El Pollo Loco
Grater Grilled Cheese
Bank of America
Wells Fargo
Einstein Bros. Bagels

ONE PASEO

Shake Shack
Nick's Del Mar
Mizuki Yama
Harland Brewing
The Butchery
Tender Greens
Parakeet Cafe
Sweetfin Poke
Tocaya Organica
Ways & Means Oyster House
International Smoke



STEVE BRUCE

Senior Managing Director
t 858-875-3605
steve.bruce@nrmk.com
CA RE Lic. #01455744

CHRIS HIGH, SIO

Senior Managing Director
t 858-875-3604
chris.high@nrmk.com
CA RE Lic. #01734544

CONOR EVANS

Associate Director
t 858-875-3607
conor.evans@nrmk.com
CA RE Lic. #01963596

4655 Executive Drive, Suite 800, San Diego, CA 92121 | t 858-875-3600 | Corporate License #01355491

NEWMARK

CRUZAN

The information contained herein has been obtained from sources deemed reliable but has not been verified and no guarantee, warranty or representation, either express or implied, is made with respect to such information. Terms of sale or lease and availability are subject to change or withdrawal without notice.