

Office / Retail Space

3001 Memorial Highway - Mandan, ND

3,200 sf - \$13.00 psf



Taylor Daniel, Commercial REALTOR®

701.391.4262

Taylor@DanielCompanies.com

DanielCompanies.com

Executive Summary for Lease

Address:	3001 Memorial Hwy Ste. B—Mandan, ND
Lease Term:	5 Year
Lease Rate:	\$13.00 psf
Approximate SF:	3,200 sf
Parking:	Ample On-site Parking
Tenant Responsibilities:	Rent, Utilities, and Interior Janitorial
Landlord Responsibilities:	RE Taxes, Building Insurance, Snow Removal, Lawn Care, Parking Lot Maintenance, Roof Maintenance, Structural Walls, Repair and Maintenance HVAC
Broker does not guarantee the information describing this property. Interested parties are advised to independently verify the information through personal inspectors or with appropriate professionals.	

\$3,467 mo. + Utilities

- 10 Perimeter Offices
- Large Open Walk-In Area
- Ample Parking
- Private Bathrooms
- Large Breakroom
- Pylon Signage on Memorial Hwy
- 17,420 Vehicles Per Day

Potential Uses:

- Professional Services
- Financial Firm
- Investment Firm
- Insurance Agency
- Dental / Medical Clinic
- Engineering Firm
- Other

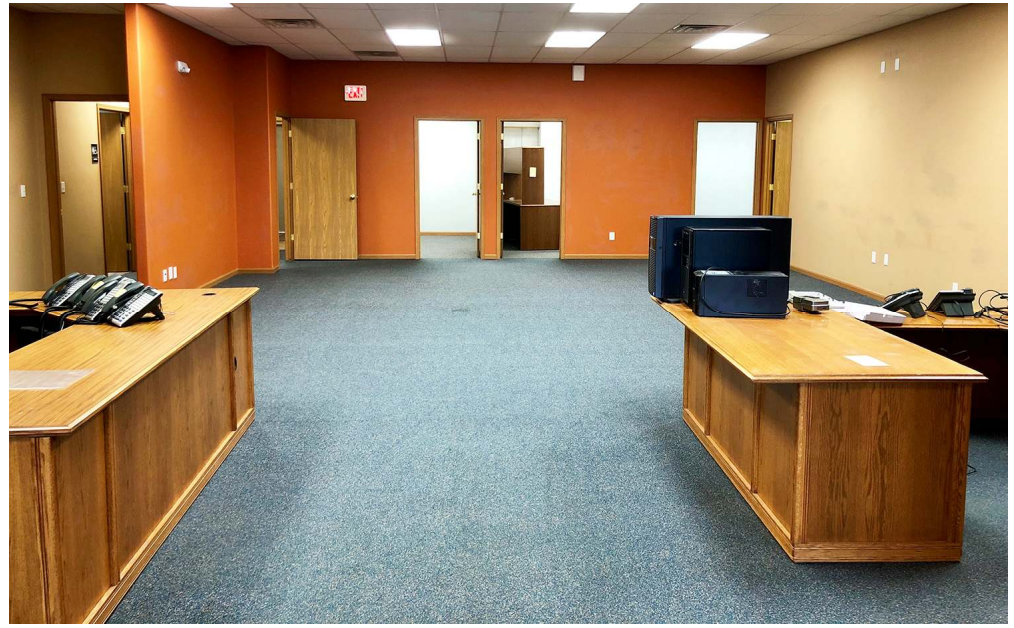


Taylor Daniel, Commercial REALTOR®

701.391.4262

Taylor@DanielCompanies.com

DanielCompanies.com





17,420
Vehicles Per Day


DANIEL COMPANIES
The Leader in Commercial Real Estate

Taylor Daniel, Commercial REALTOR®
701.391.4262
Taylor@DanielCompanies.com

DanielCompanies.com



DANIEL COMPANIES

The Leader in Commercial Real Estate



Bill Daniel
CCIM, Broker

701.220.2455
Bill@DanielCompanies.com



Kyle Holwagner
CCIM, SIOR

701.400.5373
Kyle@DanielCompanies.com



Taylor Daniel
Commercial REALTOR®

701.391.4262
Taylor@DanielCompanies.com

Serving commercial real estate clients with unmatched market knowledge, experience and a well-deserved reputation for integrity.
They know the Bismarck-Mandan commercial real estate market better than anyone.

Powerful Team. Powerful Process. Powerful Results.