

LOCATION

Building 10
12449 NE Marx Street
Portland OR 97230

TOTAL SQ.FT. OFFICE SQ.FT. DIVISIBLE SQ. FT.

10,052 sq.ft.
3,914 sq.ft.
5,000 sq.ft.

DOCK HIGH DOORS DRIVE IN DOORS CLEAR HEIGHT

5
2
18'6"

FEATURES

Desirable End Cap
4 miles to PDX Airport
10 miles to Downtown
Immediate access to I-205

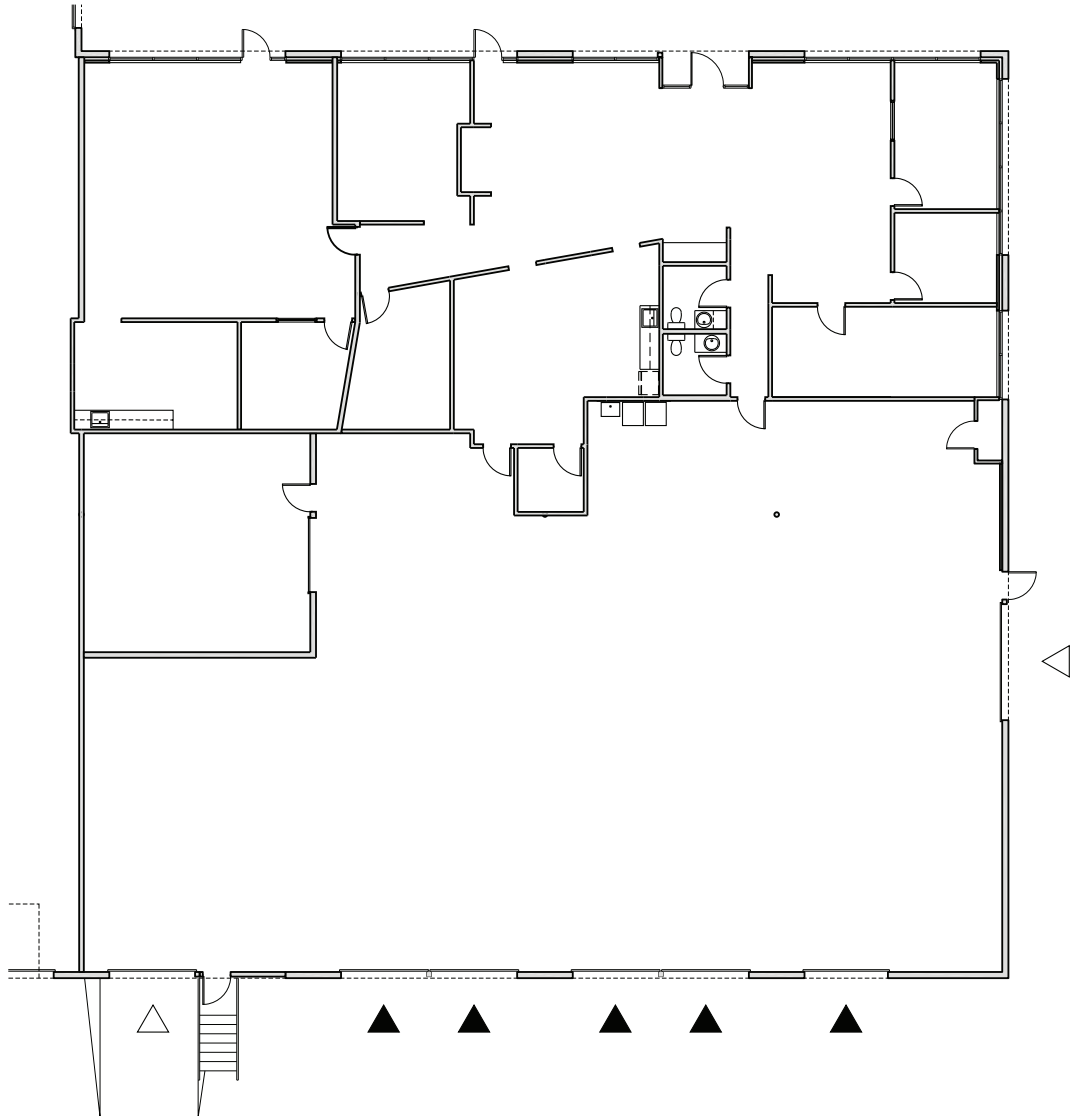
RATE

\$.60/sq.ft. - Shell
\$.90/sq.ft. - Office
NNN

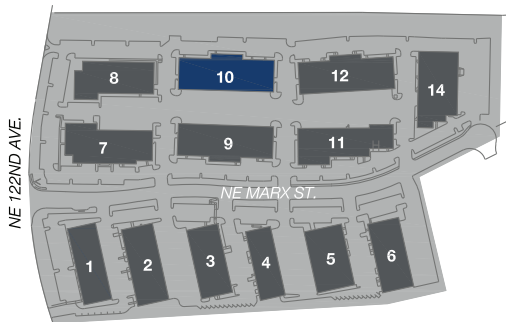
LEASING CONTACT

Jake Bigby
jakeb@pactrust.com
360-737-6300

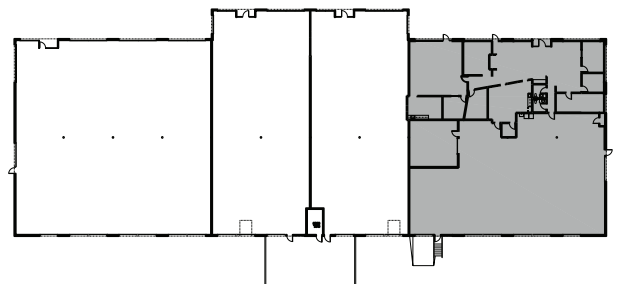




▽ GRADE ACCESS
▼ DOCK ACCESS



PACIFIC BUSINESS PARK
Portland, OR 97230



BUILDING PLAN

