



FOR LEASE

355 NW Gilman Boulevard
Issaquah, Washington



ST. GEORGE'S SQUARE

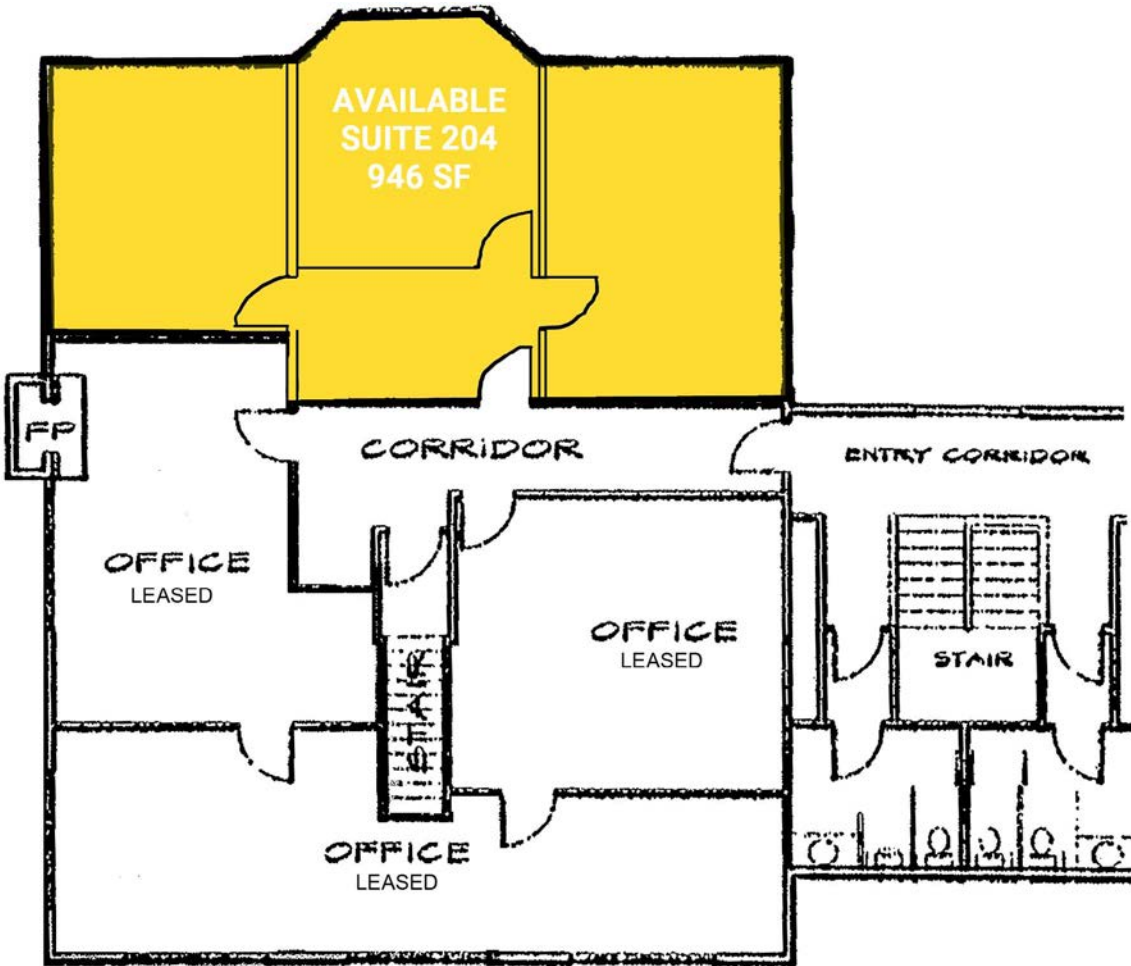
Adam Greenberg | John Viacava

First Western Properties, Inc. | 425.822.5522 | fwp-inc.com
11621 97th Lane NE, Kirkland, Washington 98034

355 NW GILMAN BOULEVARD:

946 SF \$32.00 PSF, GROSS

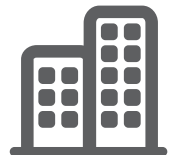
- Rare Small Office Space Available in Issaquah.
- Office Located on Second Floor of Building One
- Office Fronting Gilman Boulevard
- Next Door to Gilman Village
- Plentiful Pull-Up Parking
- Full Vehicle Access from Gilman Blvd.



Population



Average HH Income



Daytime Population

Regis - 2018

	Population	Average HH Income	Daytime Population
Mile 1	9,371	\$105,780	19,007
Mile 3	56,590	\$147,590	28,151
Mile 5	112,887	\$176,619	35,069





Home to Costco's International HQ



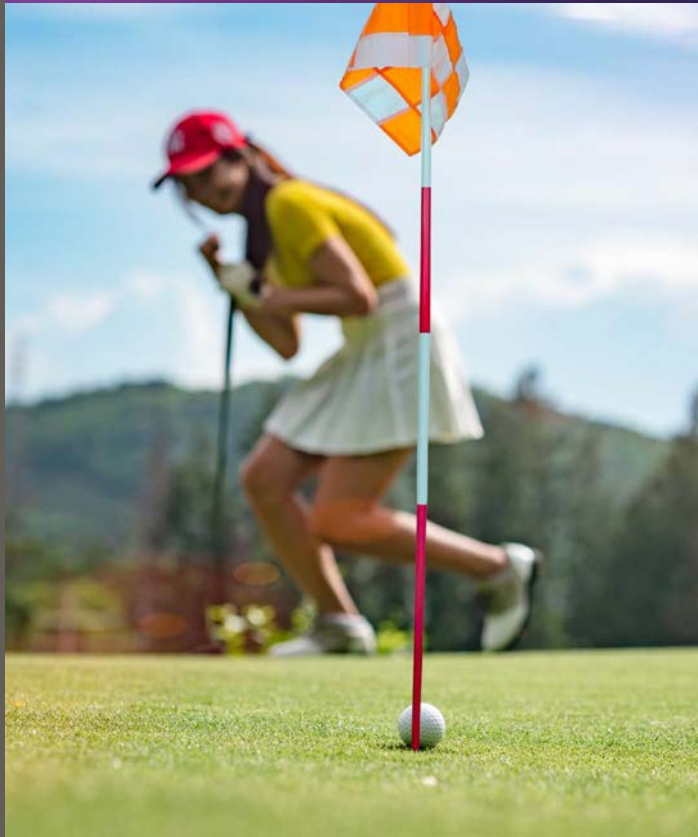
8 Miles: Bellevue
17 Miles: Seattle



40% State Pop. in 40 Mile Radius



28,000 ADT
NW Gilman Blvd.



ISSAQUAH, WA still offers the charm, setting and lifestyle of a small town although part of the growing Seattle metropolitan area. The City is committed to preserving its heritage and natural surroundings, while managing a careful plan for growth and business opportunity. Its location has made the city an attractive consideration for regional, national and international businesses. Located at the intersection of I-90 and SR 900, it affords commuters easy access to neighboring communities.

KIRKLAND | TACOMA | PORTLAND | SEATTLE



RETAIL FOCUSED. RESULTS DRIVEN.

ADAM GREENBERG

425.250.3282
adam@fwp-inc.com

JOHN VIACAVA

425.250.3279
john@fwp-inc.com



First Western Properties, Inc. | 425.822.5522
11621 97th Lane NE Kirkland, WA 98034 | fwp-inc.com

© First Western Properties, Inc. DISCLAIMER: The above information has been secured from sources believed to be reliable, however, no representations are made to its accuracy. Prospective tenants or buyers should consult their professional advisors and conduct their own independent investigation. Properties are subject to change in price and/or availability without notice.