

FOR SALE

790 Hana Way, Folsom, CA 95630  
Commercial Land - E. Bidwell Frontage



**GORDON STEVENSON**

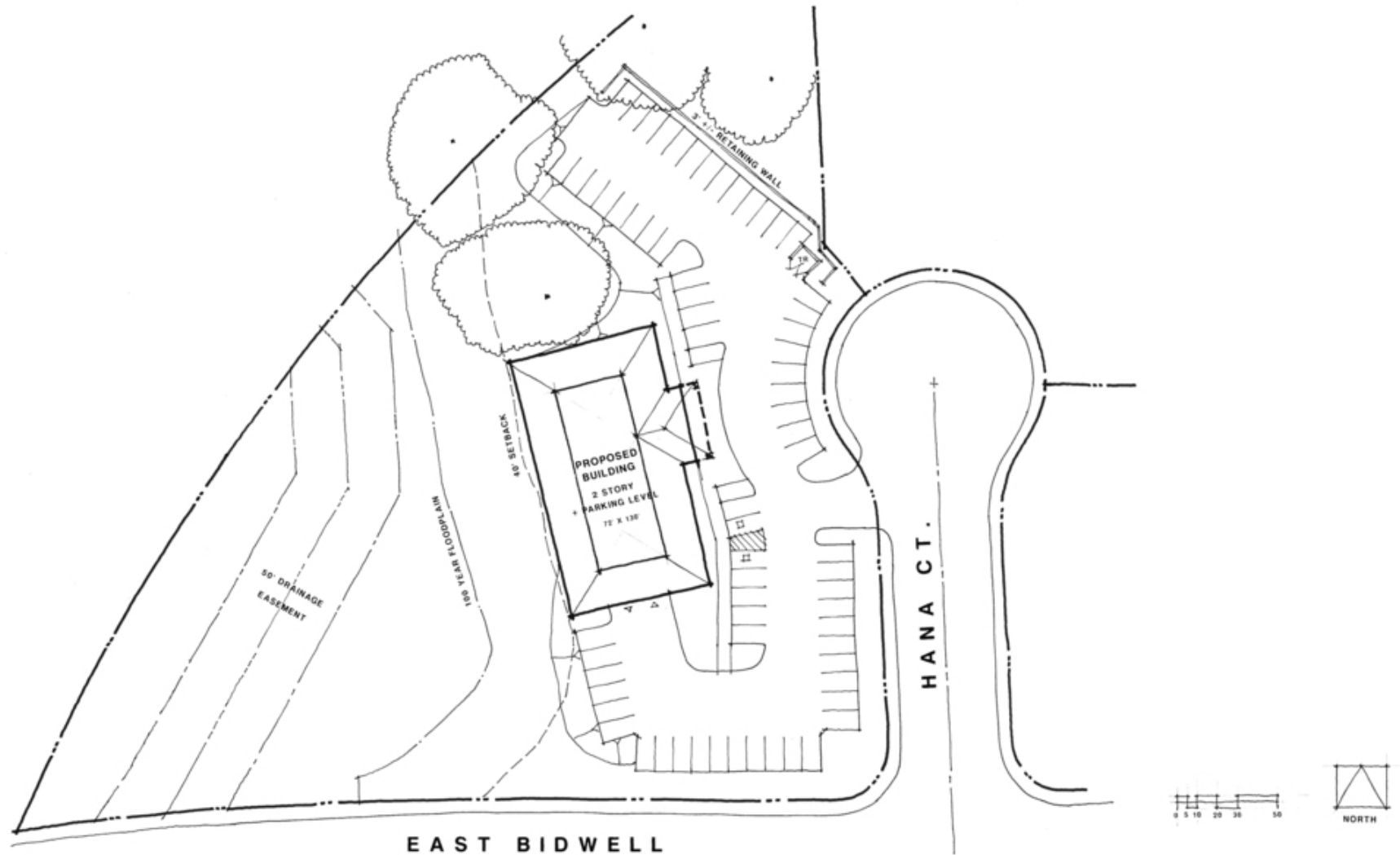
CALDRE #01092461

**Tel: 916.677.8150**

[gstevenson@tricommercial.com](mailto:gstevenson@tricommercial.com)

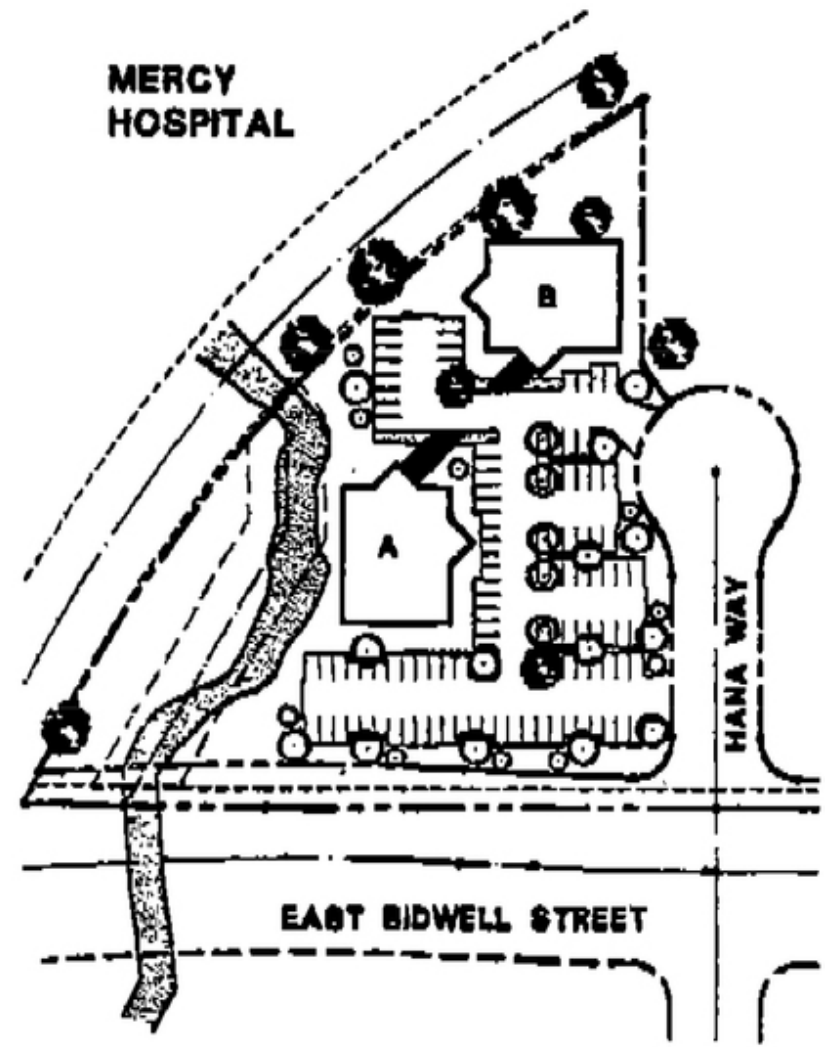
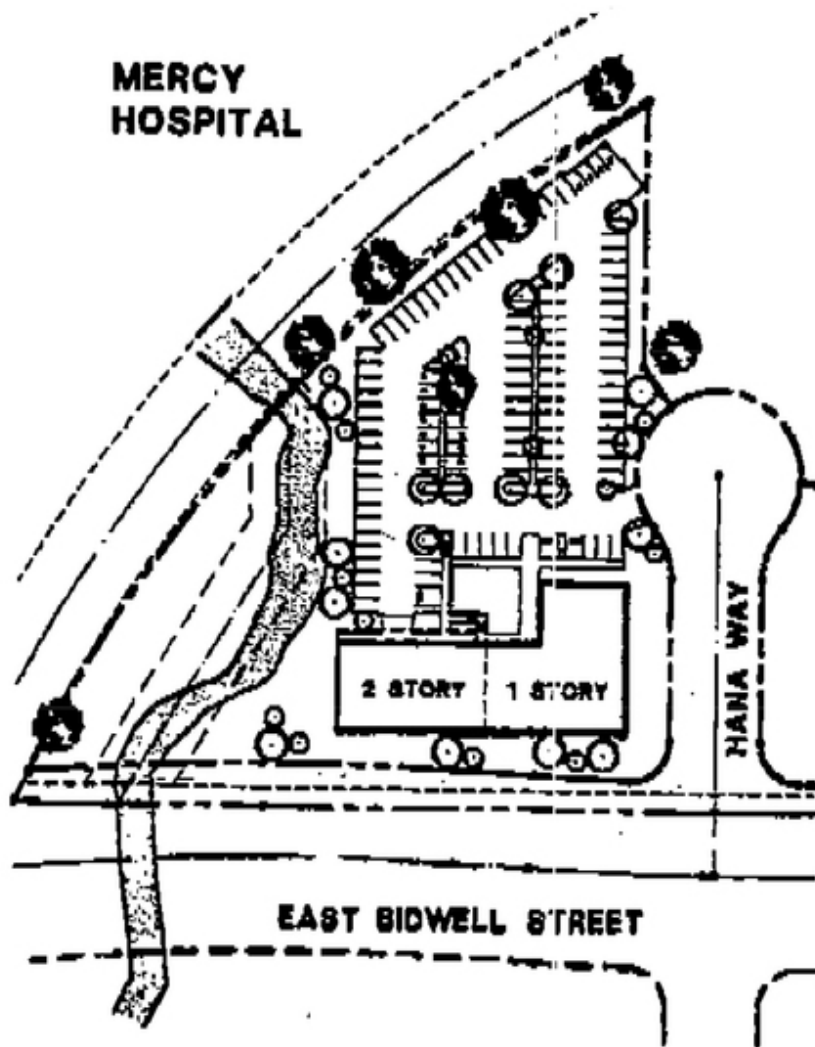
# 790 Hana Way, Folsom, CA 95630

## POSSIBLE SITE PLAN OPTION



The information in this document was obtained from sources we deem reliable; however, no warranty or representation, expressed or implied, is made as to the accuracy of the information contained herein.

POSSIBLE SITE PLAN OPTIONS



# 790 Hana Way, Folsom, CA 95630

---

## PROPERTY PHOTO



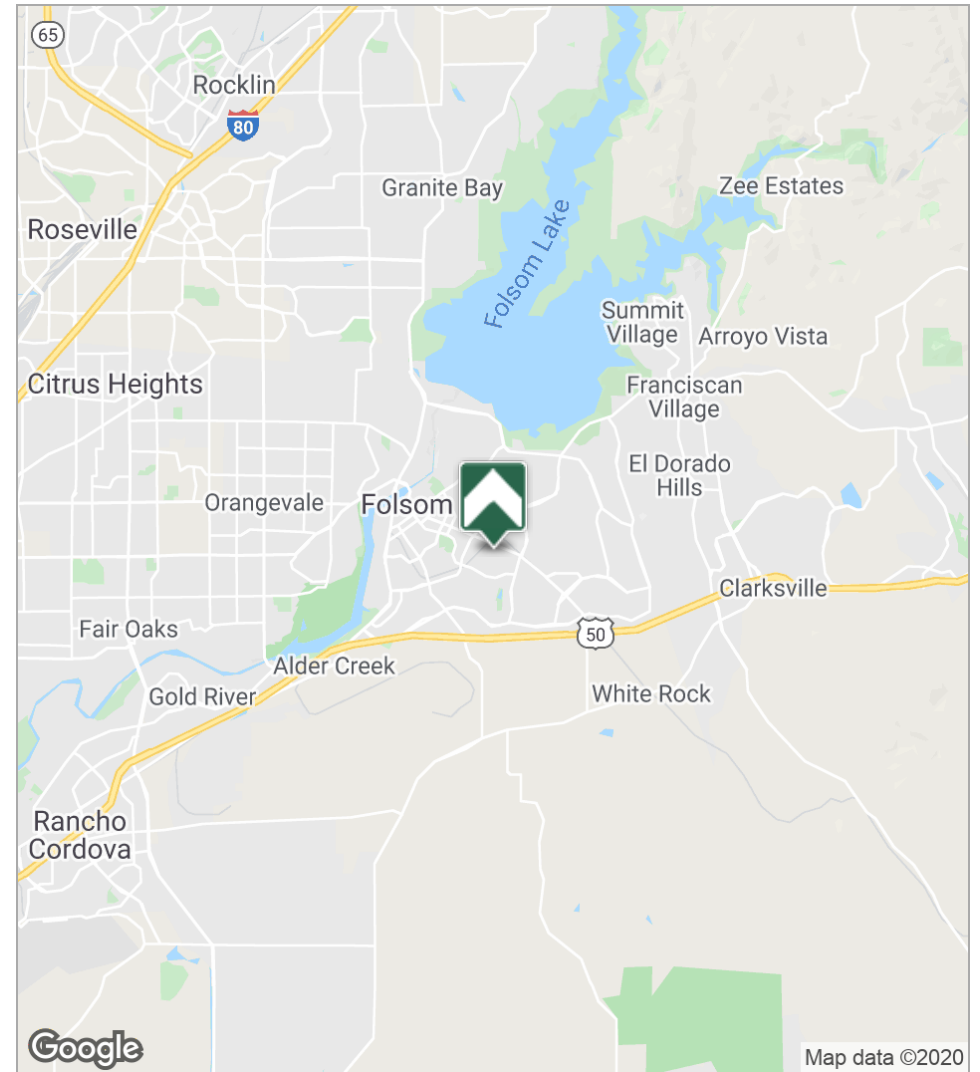
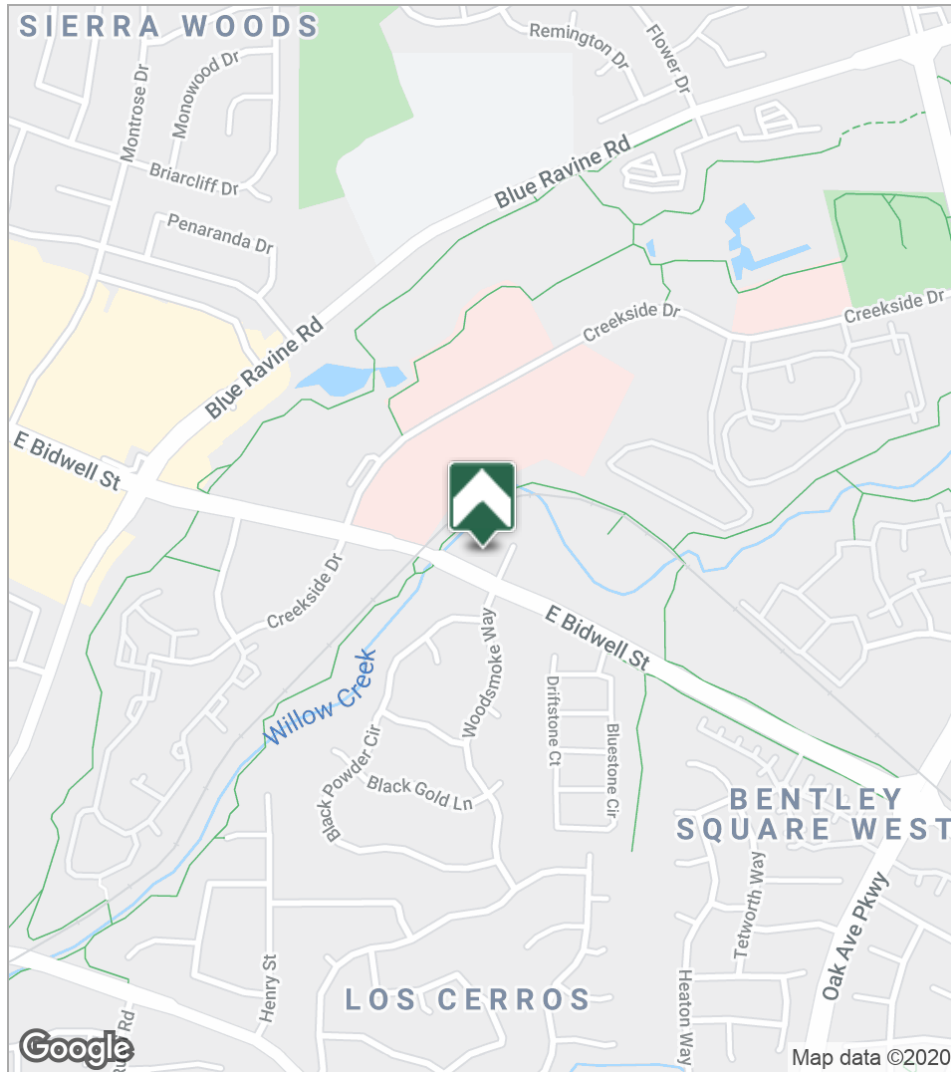
The information in this document was obtained from sources we deem reliable; however, no warranty or representation, expressed or implied, is made as to the accuracy of the information contained herein.

TRI Commercial Real Estate Services, 532 Gibson Drive, Suite 200, Roseville, CA 95678



# 790 Hana Way, Folsom, CA 95630

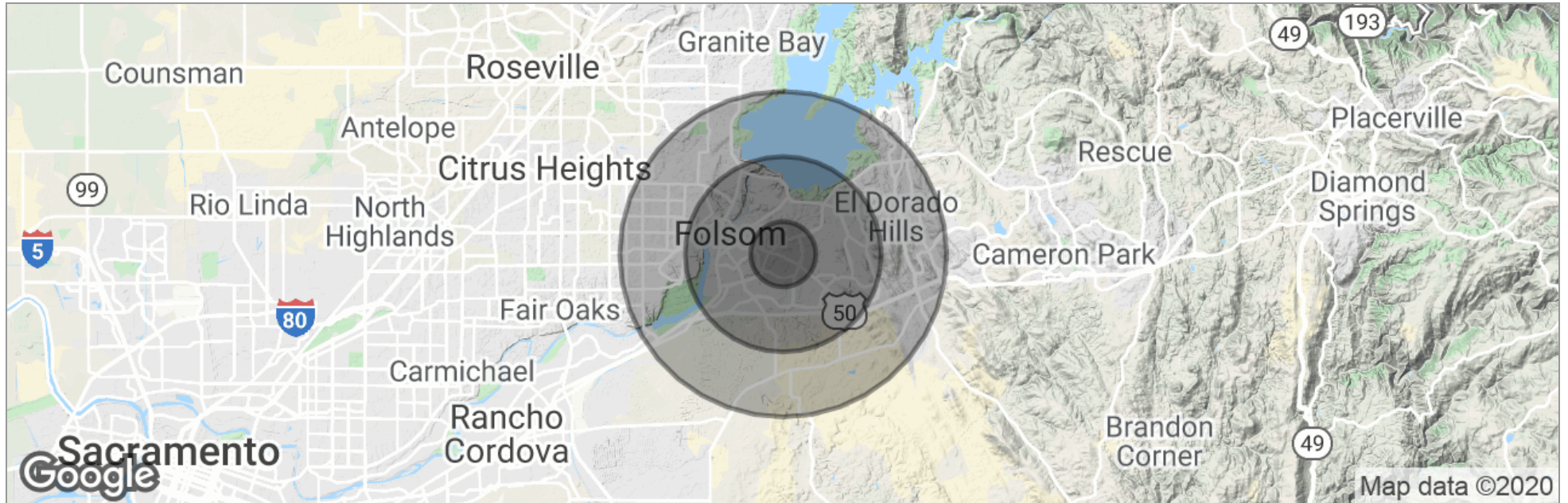
## LOCATION MAPS



The information in this document was obtained from sources we deem reliable; however, no warranty or representation, expressed or implied, is made as to the accuracy of the information contained herein.

# 790 Hana Way, Folsom, CA 95630

## DEMOGRAPHICS MAP



	1 Mile	3 Miles	5 Miles
Total Population	12,174	70,526	128,997
Population Density	3,875	2,494	1,642
Median Age	35.6	36.7	38.1
Median Age (Male)	34.5	36.1	37.4
Median Age (Female)	36.0	38.2	39.2
Total Households	5,080	22,430	43,716
# of Persons Per HH	2.4	3.1	3.0
Average HH Income	\$87,091	\$104,742	\$111,207
Average House Value	\$525,849	\$489,663	\$506,442

\* Demographic data derived from 2010 US Census

The information in this document was obtained from sources we deem reliable; however, no warranty or representation, expressed or implied, is made as to the accuracy of the information contained herein.