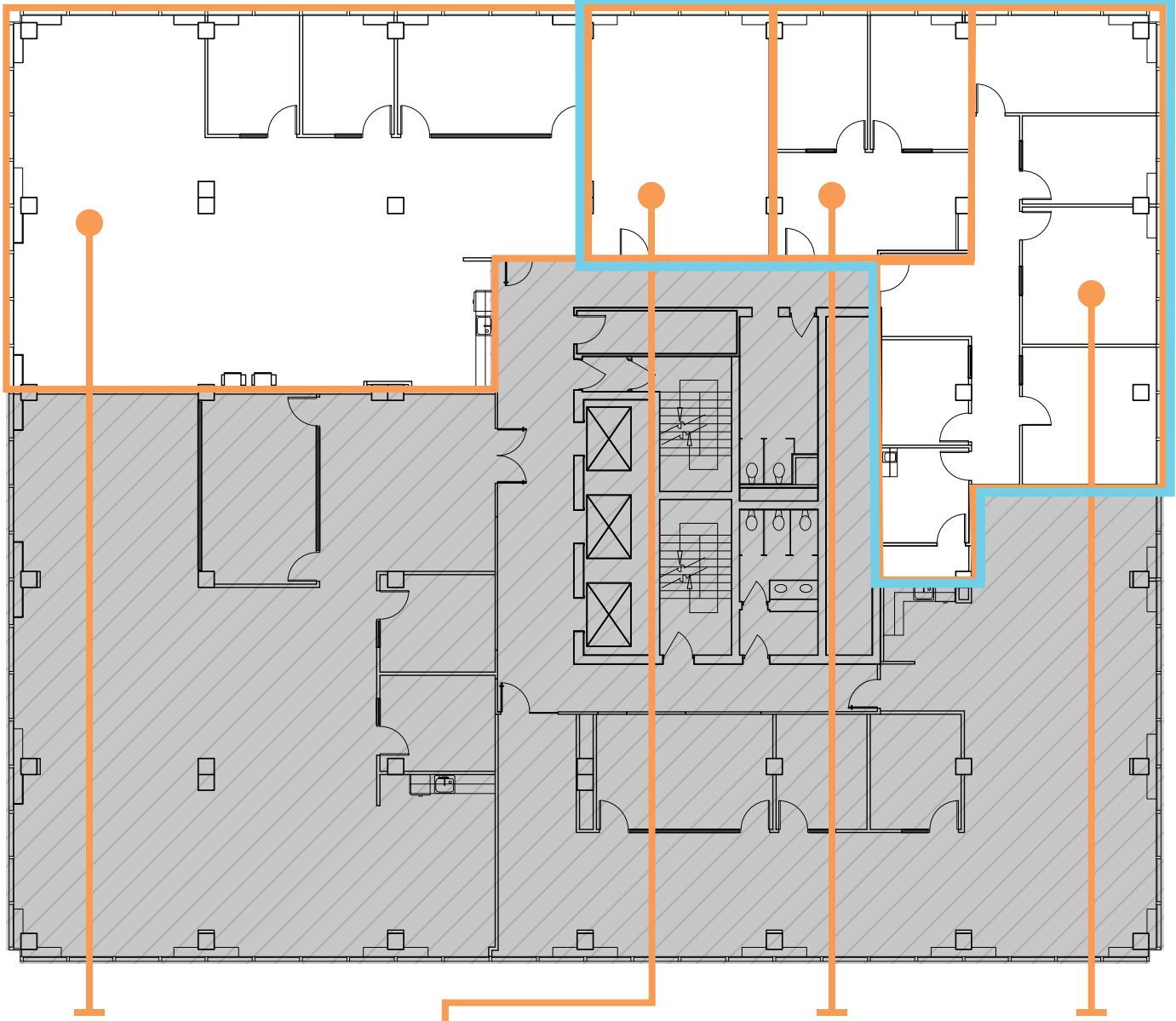


Logan Building

500 UNION STREET • SEATTLE, WA

Suites 503, 505 & 510 can be combined for a total of 2,842 RSF



Suite 500 Suite 503 Suite 505 Suite 510

2,692 RSF

- Conference room
- Kitchenette
- Private offices
- Available 6/1/2024

637 RSF

- Available 7/1/2024

597 RSF

- Available 7/1/2024

1,608 RSF

- Available 7/1/2024



[Back to Available Space](#)



For more information
or to schedule a tour,
please contact:

DAMON MCCARTNEY | 206.838.7633 | mccartney@broderickgroup.com
DAVID GREENWOOD | 206.838.7635 | greenwood@broderickgroup.com

The information contained herein has been given to us by the owner or sources that we deem reliable. We have no reason to doubt its accuracy, but we do not guarantee it. Prospective tenants should carefully verify all information contained herein.