

# Tinley Crossings

8200 W. 185th St | Tinley Park, Illinois

**100% Commissions PAID at Lease Execution!**

## AMENITIES of TINLEY CROSSINGS

- 60,000 SF convention center in close proximity
- Restaurants – three within Tinley Crossings and 100 within 4 miles
- Public transportation – Directly served by Metra and PACE
- Training – ½ mile from the newly constructed DeVry campus
- Walking path

## Highlights

- Fiber optics and T1 phone lines on site
- Minimum 1 drive in door per unit & 2 common loading docks
- Ample parking
- 18' clear ceilings
- Less than 1 mile from I-80 at Harlem Avenue
- Low Will County Taxes

## Available

- Unit M: **4,873 SF**
- Lease Rate: **\$4,075/month Modified Gross**

For More Information, Contact:

**Joshua Hearne, SIOR**

D: 630.729.7933

M: 630.810.0300 Ext. 128

[jhearne@cawleychicago.com](mailto:jhearne@cawleychicago.com)

**Calvin Gunn**

D: 630.735.8734

M: 630.810.0300 Ext. 121

[cgunn@cawleychicago.com](mailto:cgunn@cawleychicago.com)

# Site Plan

8200 W 185th St



For More Information, Contact:

**Joshua Hearne, SIOR**

D: 630.729.7933

M: 630.810.0300 Ext. 128

[jhearne@cawleychicago.com](mailto:jhearne@cawleychicago.com)

**Calvin Gunn**

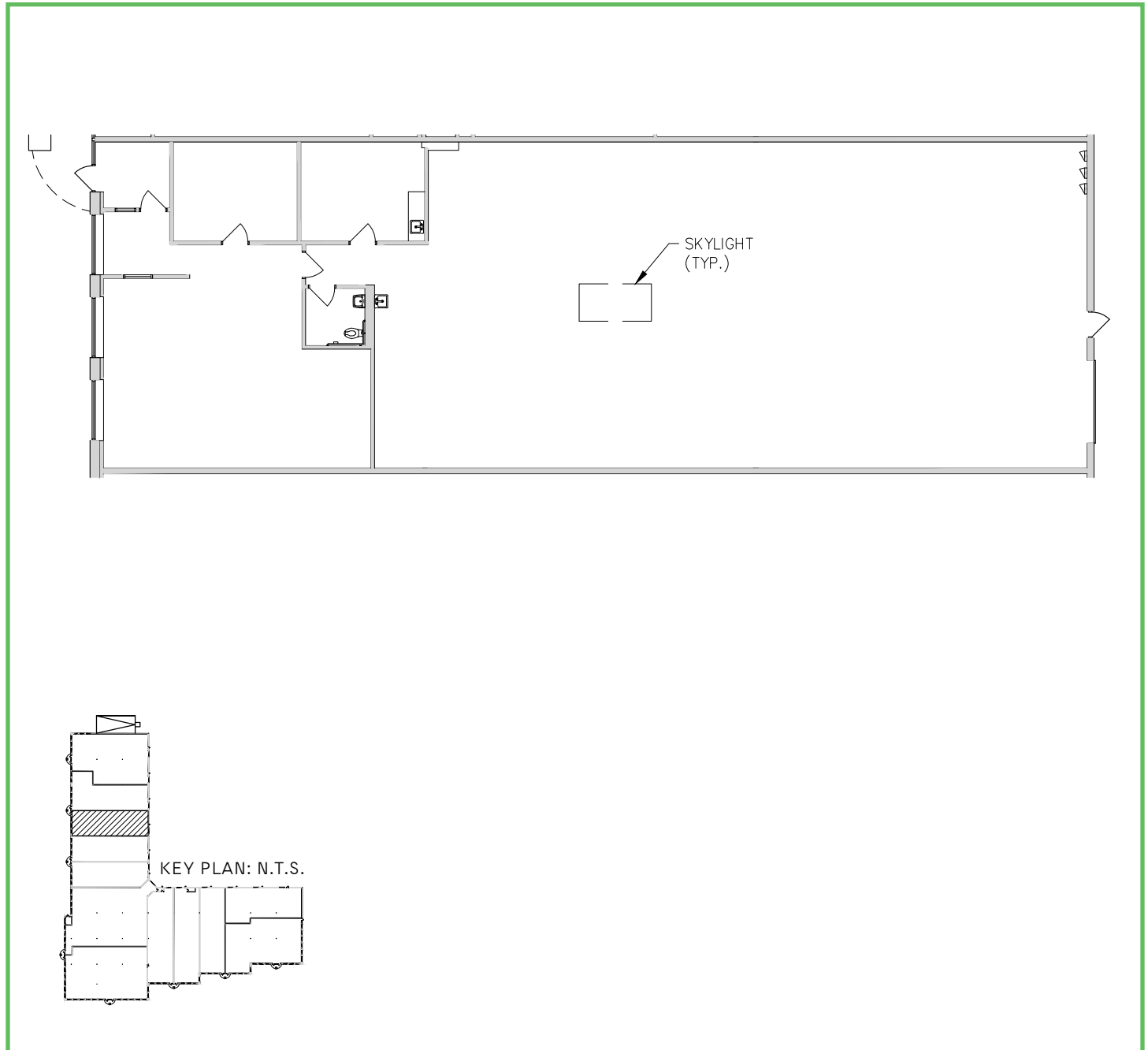
D: 630.735.8734

M: 630.810.0300 Ext. 121

[cgunn@cawleychicago.com](mailto:cgunn@cawleychicago.com)

# Floor Plan

Unit 8200 - M | 4,873 SF



For More Information, Contact:

**Joshua Hearne, SIOR**

D: 630.729.7933

M: 630.810.0300 Ext. 128

[jhearne@cawleychicago.com](mailto:jhearne@cawleychicago.com)

**Calvin Gunn**

D: 630.735.8734

M: 630.810.0300 Ext. 121

[cgunn@cawleychicago.com](mailto:cgunn@cawleychicago.com)