

Medical Office Space Available for Lease

1817 Black Rock Turnpike
Fairfield, Connecticut 06825



For Lease at \$24.00/SF NNN

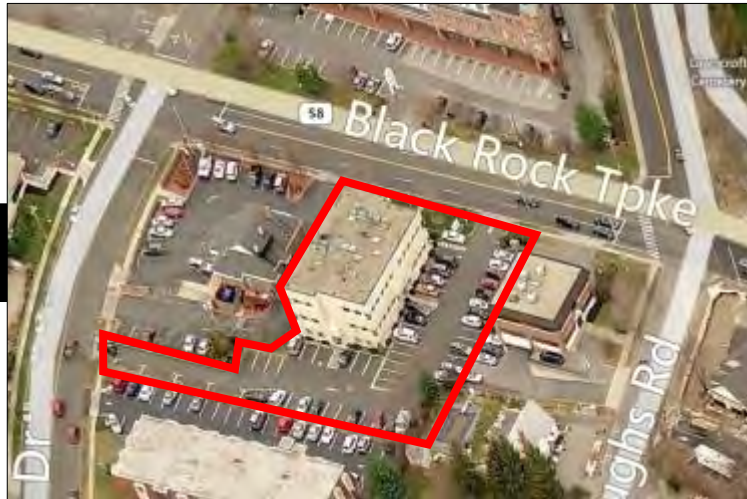
- ▶ **Medical Office Suite Available in Professional Office Building Located on Black Rock Turnpike.**
- ▶ Ideal for professional / medical use, there is one office suite available on the second floor. Suite 204 consists of 875 SF and it is currently configured with a waiting room, 5 offices, and a private restroom.
- ▶ The building has ample parking and is handicapped accessible.
- ▶ Within walking distance to restaurants, banks, shopping, and public transportation. Across from Anytime Fitness and one block from ShopRite Shopping Plaza.
- ▶ Easy access to Merritt Parkway (Route 15), Exit 44, and I95, Exit 24. Less than two miles to the Fairfield Metro Train Station and on the Greater Bridgeport Transit Bus Line.

Broker: Jon Angel
President
203.335.6600, Ext. 21
jangel@angelcommercial.com



2425 POST ROAD, SUITE 303, SOUTHPORT, CT 06890 • TEL 203.335.6600 • FAX 203.335.9900 • WWW.ANGELCOMMERCIAL.COM

No warranty or representation, express or implied is made as to the accuracy of the information contained herein, and same is submitted subject to errors, omissions, change of price, rental or other conditions, withdrawal without notice and to any special listing conditions imposed by our principals.



Fact Sheet	3
Floor Plan	4
Location Map	5
Photo Gallery	6

Broker: Jon Angel
President
203.335.6600, Ext. 21
jangel@angelcommercial.com





Medical Office Suite Available in Professional Office Building Located on Black Rock Turnpike. Ideal for professional / medical use, there is one office suite available on the second floor. Suite 204 consists of 875 SF and it is currently configured with a waiting room, 5 offices, and a private restroom. The building has ample parking and is handicapped accessible.

Within walking distance to restaurants, banks, shopping, and public transportation. Across from Anytime Fitness and one block from ShopRite Shopping Plaza. Easy access to Merritt Parkway (Route 15), Exit 44, and I95, Exit 24. Less than two miles to the Fairfield Metro Train Station and on the Greater Bridgeport Transit Bus Line.

The Site

Total Space Available:	875 SF
Total Building Size:	12,806 SF
Land:	0.67 acres
Real Estate Taxes:	\$3.85/SF (2019)
Zoning:	DCD
Year Built:	1984, Renovated 2010
Stories:	Two
Tenancy:	Multiple
Floor:	Second

Three Mile Demographics

Population:	130,411
Median HH Income:	\$62,123

Features

Traffic Count:	22,458 Vehicles per day
Parking:	55 spaces in common
Amenities:	Skylights Elevator Sprinkler system

Utilities

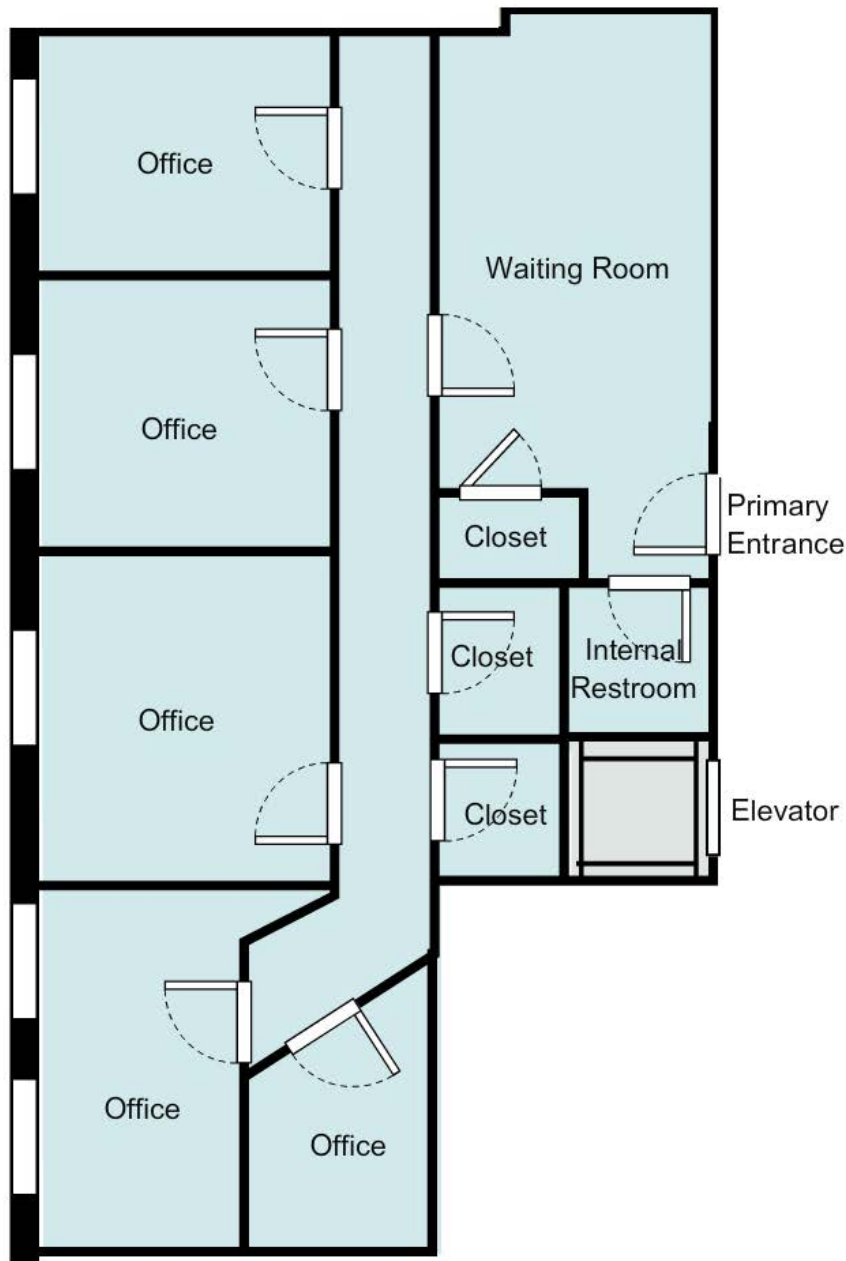
Water/Sewer:	City/City
A/C:	Central Air-Conditioning
Heating:	Electric

Five Mile Demographics

Population:	233,677
Median HH Income:	\$60,404

Broker: Jon Angel
President
203.335.6600, Ext. 21
jangel@angelcommercial.com





SUITE 204

Broker: Jon Angel
President
203.335.6600, Ext. 21
jangel@angelcommercial.com



2425 POST ROAD, SUITE 303, SOUTHPORT, CT 06890 • TEL 203.335.6600 • FAX 203.335.9900 • WWW.ANGELCOMMERCIAL.COM

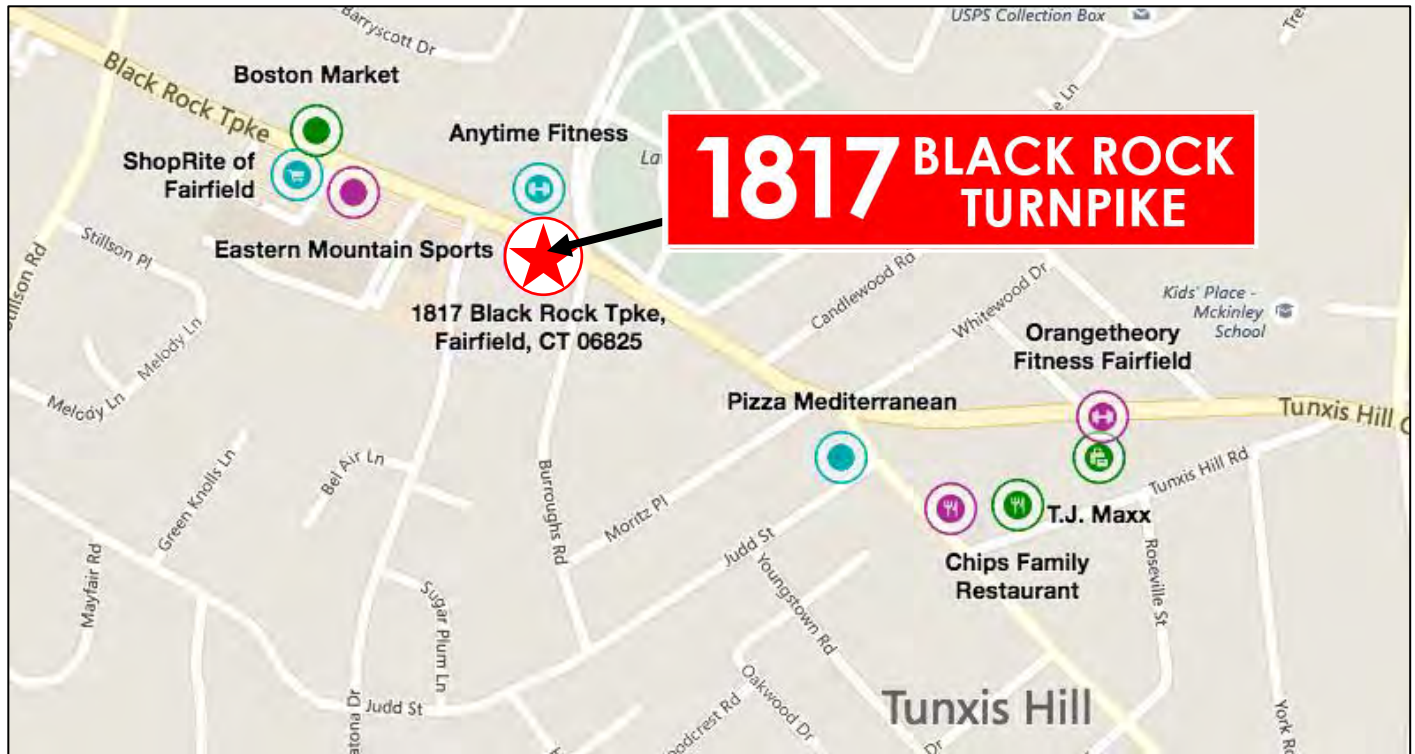
No warranty or representation, express or implied is made as to the accuracy of the information contained herein, and same is submitted subject to errors, omissions, change of price, rental or other conditions, withdrawal without notice and to any special listing conditions imposed by our principals.

For Lease

Location Map

1817 Black Rock Turnpike

Fairfield, Connecticut 06825



Within walking distance to restaurants, banks, shopping, and public transportation.

Across from Anytime Fitness and one block from ShopRite Shopping Plaza.

Easy access to Merritt Parkway (Route 15), Exit 44, and I-95, Exit 24.

Less than two miles to the Fairfield Metro Train Station and on the Greater Bridgeport Transit Bus Line.



Broker: Jon Angel
President
203.335.6600, Ext. 21
jangel@angelcommercial.com



2425 POST ROAD, SUITE 303, SOUTHPORT, CT 06890 • TEL 203.335.6600 • FAX 203.335.9900 • WWW.ANGELCOMMERCIAL.COM

No warranty or representation, express or implied is made as to the accuracy of the information contained herein, and same is submitted subject to errors, omissions, change of price, rental or other conditions, withdrawal without notice and to any special listing conditions imposed by our principals.

For Lease

Photo Gallery - Suite 204

1817 Black Rock Turnpike

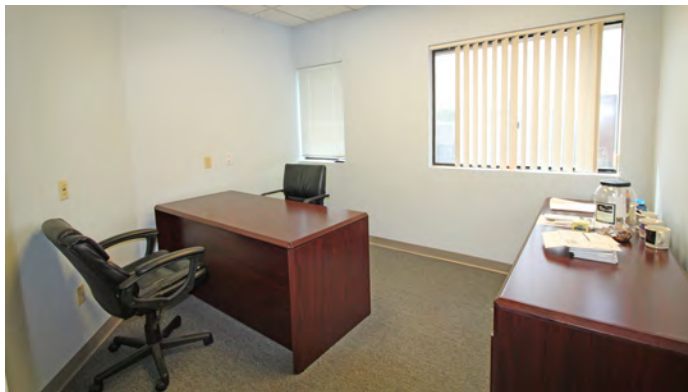
Fairfield, Connecticut 06825



WAITING / CONFERENCE ROOM & SKYLIGHT



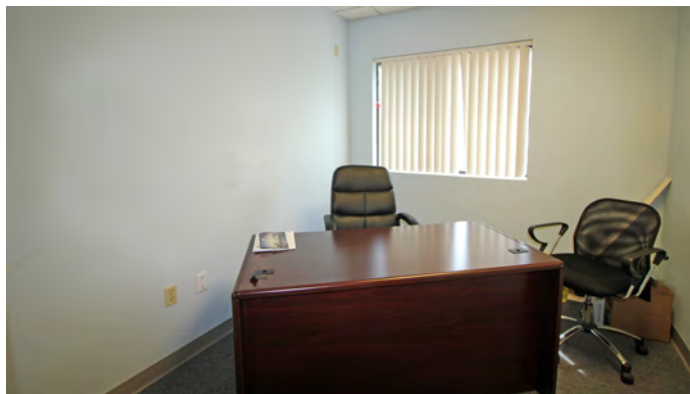
PRIVATE OFFICE



PRIVATE OFFICE



PRIVATE OFFICE



PRIVATE OFFICE



PRIVATE OFFICE

Broker: Jon Angel
President
203.335.6600, Ext. 21
jangel@angelcommercial.com



2425 POST ROAD, SUITE 303, SOUTHPORT, CT 06890 • TEL 203.335.6600 • FAX 203.335.9900 • WWW.ANGELCOMMERCIAL.COM

No warranty or representation, express or implied is made as to the accuracy of the information contained herein, and same is submitted subject to errors, omissions, change of price, rental or other conditions, withdrawal without notice and to any special listing conditions imposed by our principals.