



River Park

PROFESSIONAL CENTER

www.2901ventura.com

2901 N. Ventura Road, Oxnard, CA



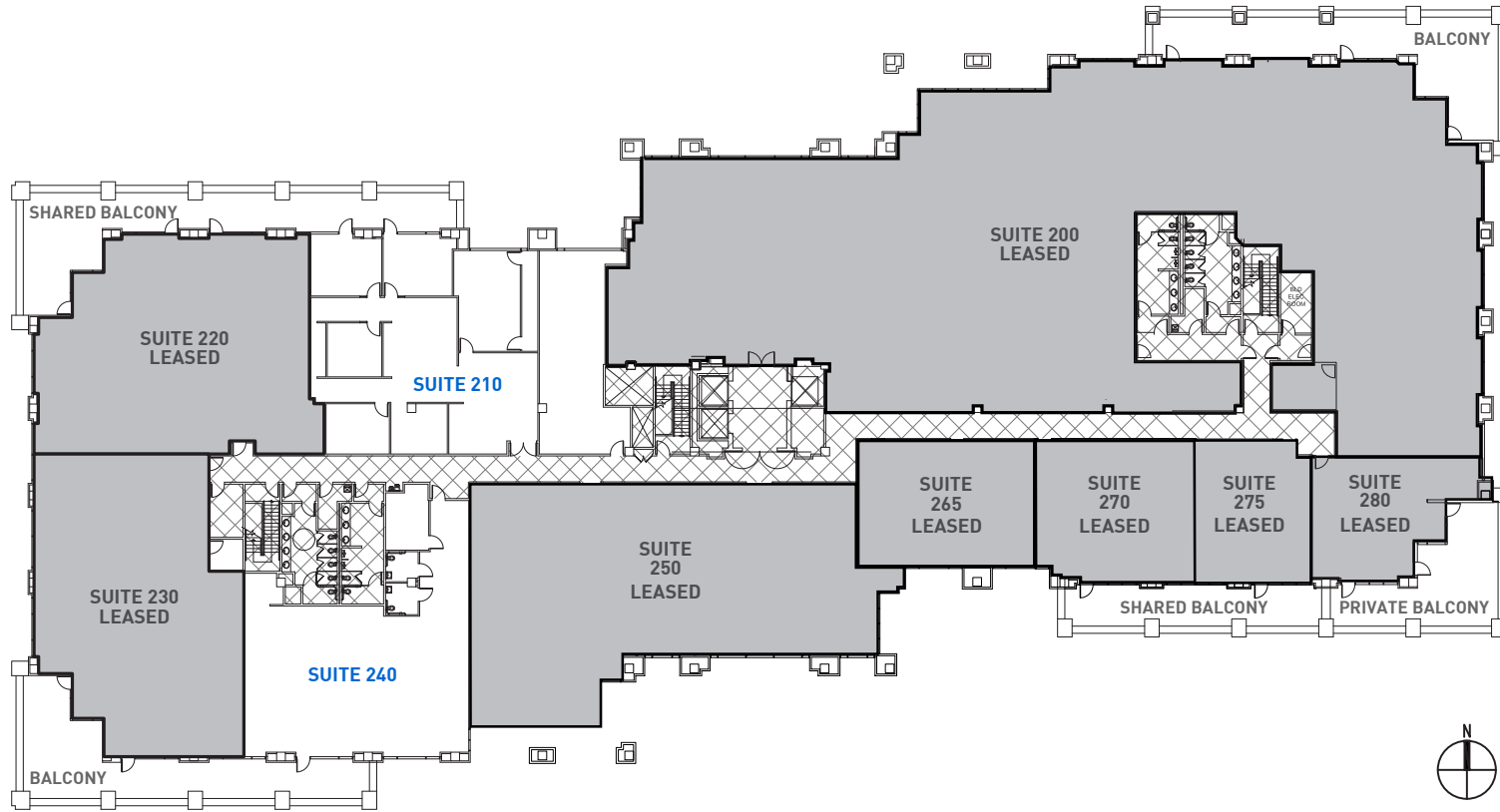
PROPERTY SPECIFICATIONS

| | |
|-----------------------|--|
| LOCATION: | 2901 N. Ventura Road, Oxnard, CA 93036 |
| YEAR BUILT: | 1993 |
| BUILDING SIZE: | 113,029 SF |
| LOT SIZE: | 7.6 Acres |
| STORIES: | 3 |
| ELEVATOR: | Yes |
| PARKING: | 452 Surface Spaces |
| ZONING: | C-2 |

PROPERTY HIGHLIGHTS

- 3-Story multi-tenant Class 'A' professional office building
- Highly efficient floor plates with flexible floor plans
- Extensive window line with excellent views
- Private balconies (2nd & 3rd Floor)
- Exterior building and monument signage available
- Close proximity to retail and restaurant amenities at The Destination River Park, The Collection
- Easy access to Ventura 101 Freeway

SECOND FLOOR PLAN



| SUITE | SIZE | DIVISIBLE | RATE | LEASE TYPE | STATUS |
|-----------|-----------|-----------|------------|--------------------|-----------|
| Suite 210 | 4,025 RSF | No | \$2.35 PSF | Full-Service Gross | Available |
| Suite 240 | 2,959 RSF | No | \$2.35 PSF | Full-Service Gross | Available |

River Park

PROFESSIONAL CENTER

2901 N. Ventura Road, Oxnard, CA



CONTACT:

David Kim

Principal

805.626.1234

dkim@lee-re.com

Lic # 01483179

Cory Richmond

Principal

818.444.4915

crichmond@lee-re.com

Lic # 01225466

www.2901ventura.com



COMMERCIAL REAL ESTATE SERVICES

Lee & Associates® - LA North/Ventura, Inc.

Corporate ID #01191898

A Member of the Lee & Associates Group of Companies

1000 Town Center Drive, Suite 310

Oxnard, CA 93036

805.626.1200 | 805.413.7000

www.lee-associates.com

No warranty or representation is made to the accuracy of the foregoing information. Terms of sale or lease and availability are subject to change or withdrawal without notice.

