

**Pad Sites or Multi Tenant Building For Lease
Red Bug Lake & Mikler Road
Oviedo, FL 32765**



**Bank,
Restaurant,
Office, or Retail
Outparcels**

**JOIN
ROCK N' BREWS
&
MACARONI
GRILL**

- Centrally located in Oviedo (NE Orlando) at the southeast corner of Red Bug Lake Road and Mikler Road, a signalized intersection.
- 2 Pad sites - 6,000 SF (or 6,000 SF Multi-Tenant Building) and 7,500 SF Available For Lease.
- All site work completed including monument sign.
- Approximately 1 mile east of Tuskawilla Road and 1 mile west of the Oviedo Mall.
- Minutes from downtown Orlando, I-4, the Central Florida Greenway (SR 417), the Orlando Sanford International Airports, The University of Central Florida, and Seminole Community College.
- Traffic Count: 39,000 VPD on Red Bug Lake.



2017 Demographics

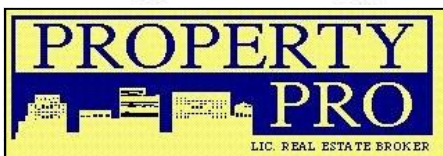
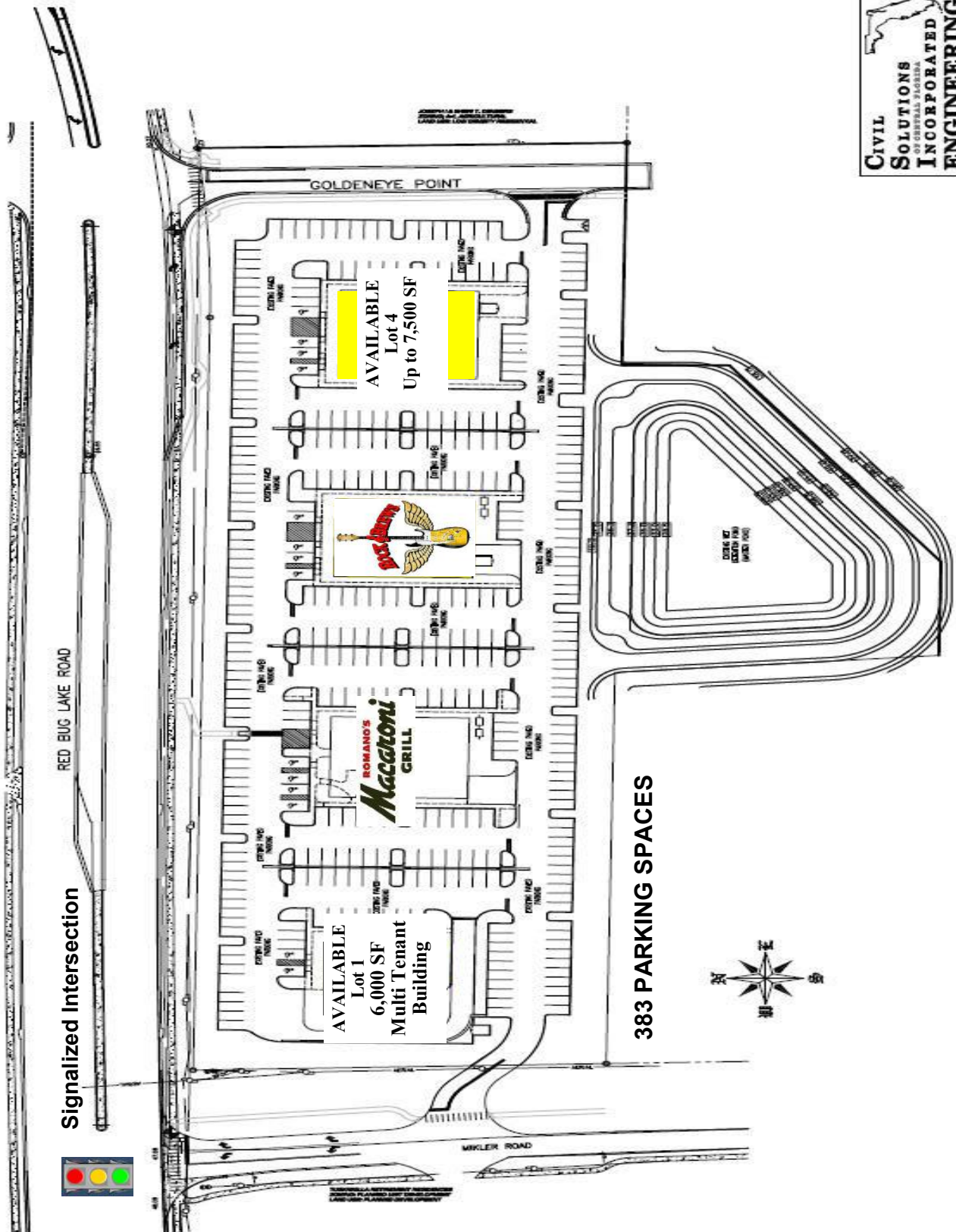
	<u>3 Miles</u>	<u>5 Miles</u>	<u>7 Miles</u>
Population	65,063	214,105	361,856
Average HH Income	\$98,410	\$78,179	\$77,629
Households	25,066	82,397	138,684
Employees	18,721	67,754	133,892



332 South Plant Ave.
Tampa, FL 33606-2346
(813) 835-7747 Phone
(813) 839-3299 Fax

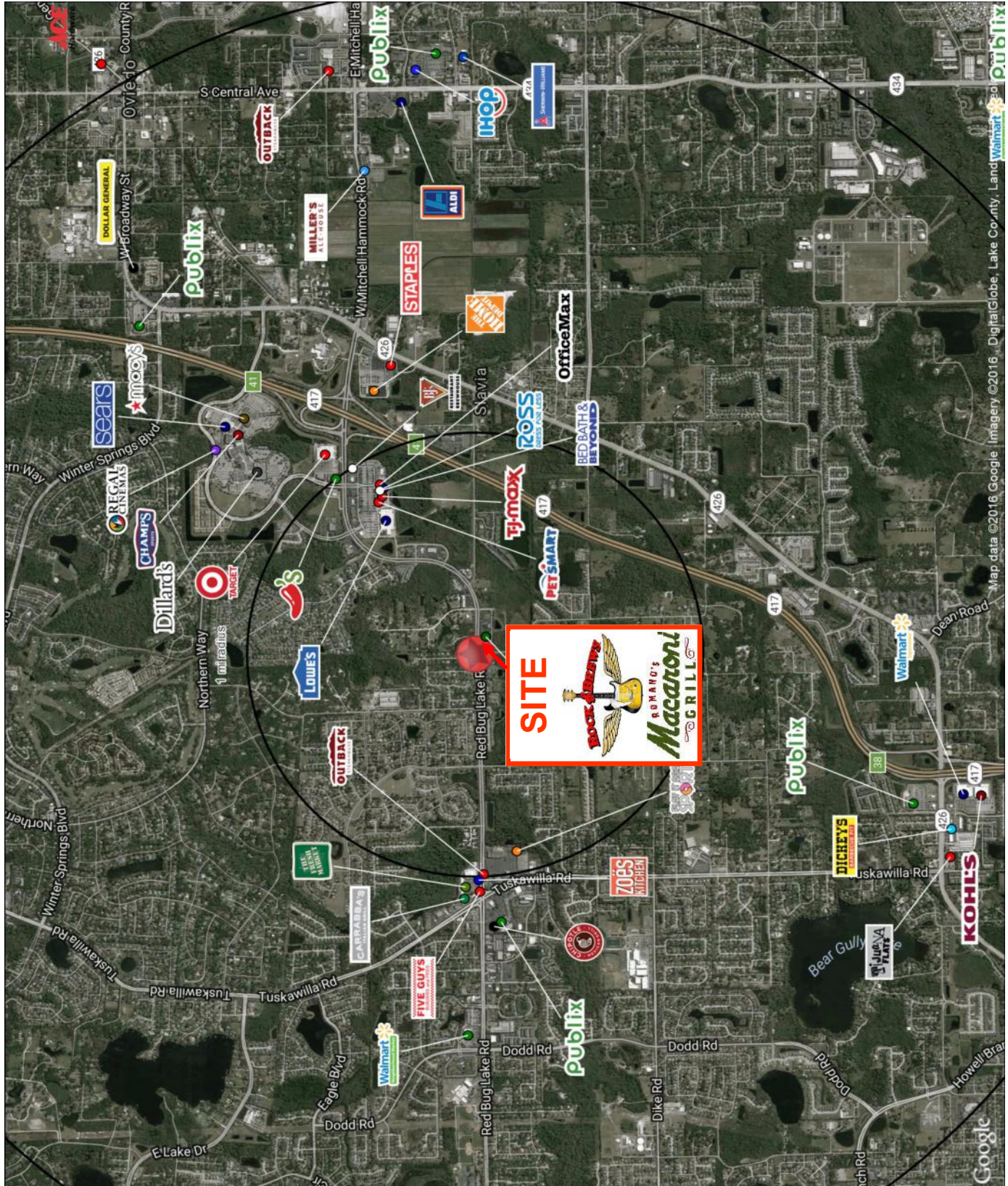
Site Plan

Civil
SOLUTIONS
CONSULTANTS
INCORPORATED
ENGINEERING



Red Bug Lake & Mikler Road
Oviedo, FL 32765

Retail Map



**Red Bug Lake & Mikler Road
Oviedo, FL 32765**