

For Sale or Lease

Sale Price: Undisclosed

± 12,900 Square Foot Office Building

707 Commons Drive, Sacramento, CA



Property Details

- Most Unique Owner/User Building in Campus Commons
- ±6,400 SF Contiguous
- Divisible to ±1,500 SF
- Exposed Ceiling on Second Floor; Sky Lights/Open Atrium
- Fully Remodeled in 2006
- Kitchen including Stove
- 4/1,000 Parking
- Existing Income of close to 50% of Building

Tom S.Bacci, SVP
916.751.3630
tbacci@voitco.com
Lic. #01078422

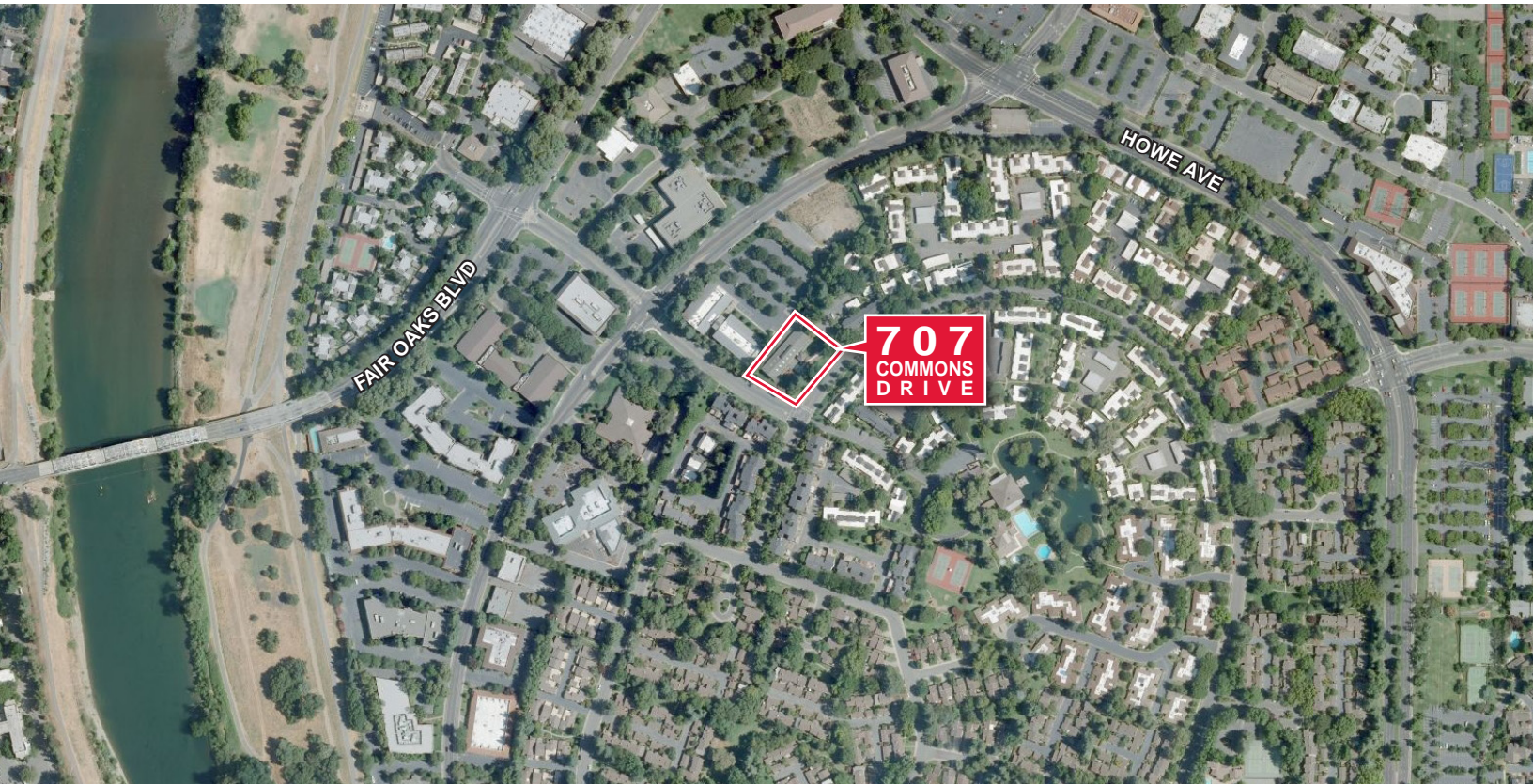
2237 Douglas Blvd., Suite 100, Roseville, CA 95661
916.772.8648 | 916.848.0205 Fax | Lic #01333376 | www.voitco.com

Voit

REAL ESTATE SERVICES

For Sale or Lease ± 12,900 Square Foot Office Building

707 Commons Drive, Sacramento, CA



Tom S. Bacci, SVP
916.751.3630
tbacci@voitco.com
Lic. #01078422

2237 Douglas Blvd., Suite 100, Roseville, CA 95661
916.772.8648 | 916.848.0205 Fax | Lic #01333376 | www.voitco.com

The information contained herein has been obtained from sources we deem reliable. While we have no reason to doubt its accuracy, we do not guarantee it.
©2011 Voit Real Estate Services, Inc. All Rights Reserved. Real People. Real Solutions.® is a registered trademark of Voit Real Estate Services.

Voit
REAL ESTATE SERVICES

For Sale or Lease ± 12,900 Square Foot Office Building

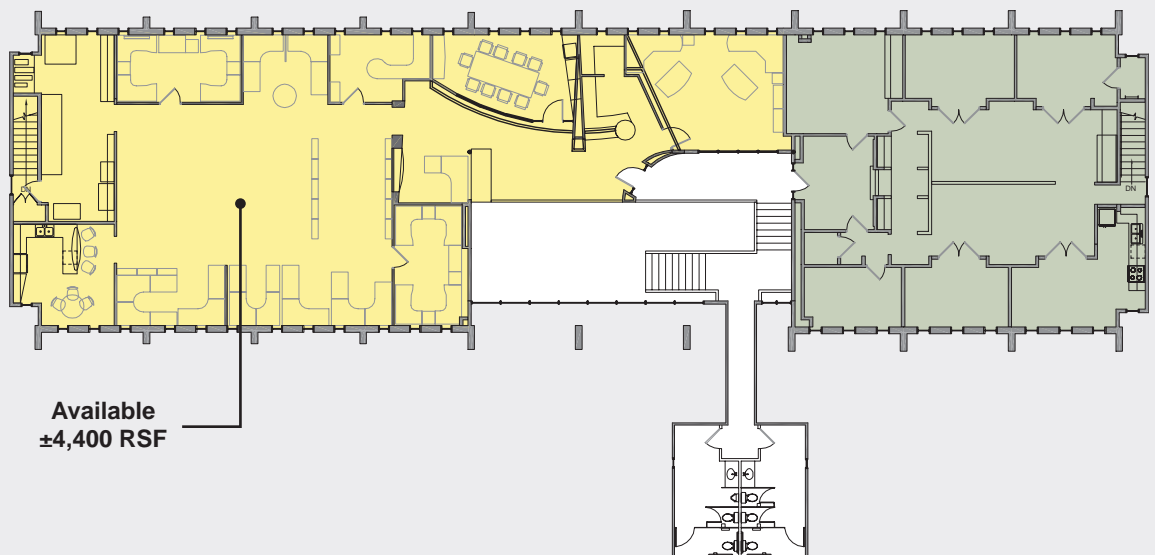
707 Commons Drive, Sacramento, CA



First Floor



Second Floor



Tom S. Bacci, SVP
916.751.3630
tbacci@voitco.com
Lic. #01078422

2237 Douglas Blvd., Suite 100, Roseville, CA 95661
916.772.8648 | 916.848.0205 Fax | Lic #01333376 | www.voitco.com

The information contained herein has been obtained from sources we deem reliable. While we have no reason to doubt its accuracy, we do not guarantee it.
©2011 Voit Real Estate Services, Inc. All Rights Reserved. Real People. Real Solutions.® is a registered trademark of Voit Real Estate Services.

Voit
REAL ESTATE SERVICES

Real People. Real Solutions.®

Voit

REAL ESTATE SERVICES