

# 666 FIFTH AVENUE



# SPACE DETAILS

## LOCATION

West block between East 52nd and 53rd Streets

## APPROXIMATE SIZE

Ground Floor 2,030 SF

## CEILING HEIGHT

Ground Floor 19 FT

## TERM

10 Year Sublease

## POSSESSION

Arranged

## SITE STATUS

Currently Tissot

## NEIGHBORS

Louis Vuitton, Salvatore Ferragamo, Saks Fifth Avenue, Versace, Rolex, Valentino, BLANCPAIN, Coach, Ermenegildo Zegna, Cartier, Jimmy Choo and Tag Heuer

## COMMENTS

Unparalleled Fifth Avenue two-story branding opportunity

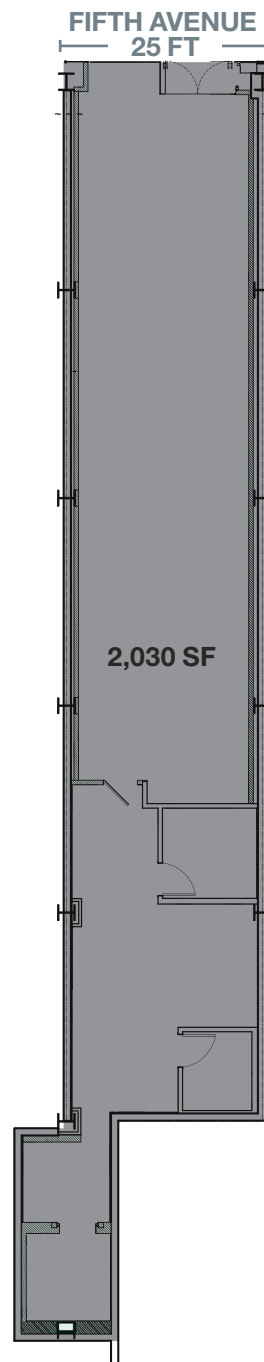
Within close proximity to Rockefeller Center, St. Patrick's Cathedral, MoMa, Central Park, Radio City Music Hall and Times Square

Steps from the  Fifth Avenue/53rd Street station

One of the highest densities of tourists and daytime office populations, with some of the most expensive retail real estate in the world

Saks Fifth Avenue generates more than \$18,000 in revenue per square foot annually

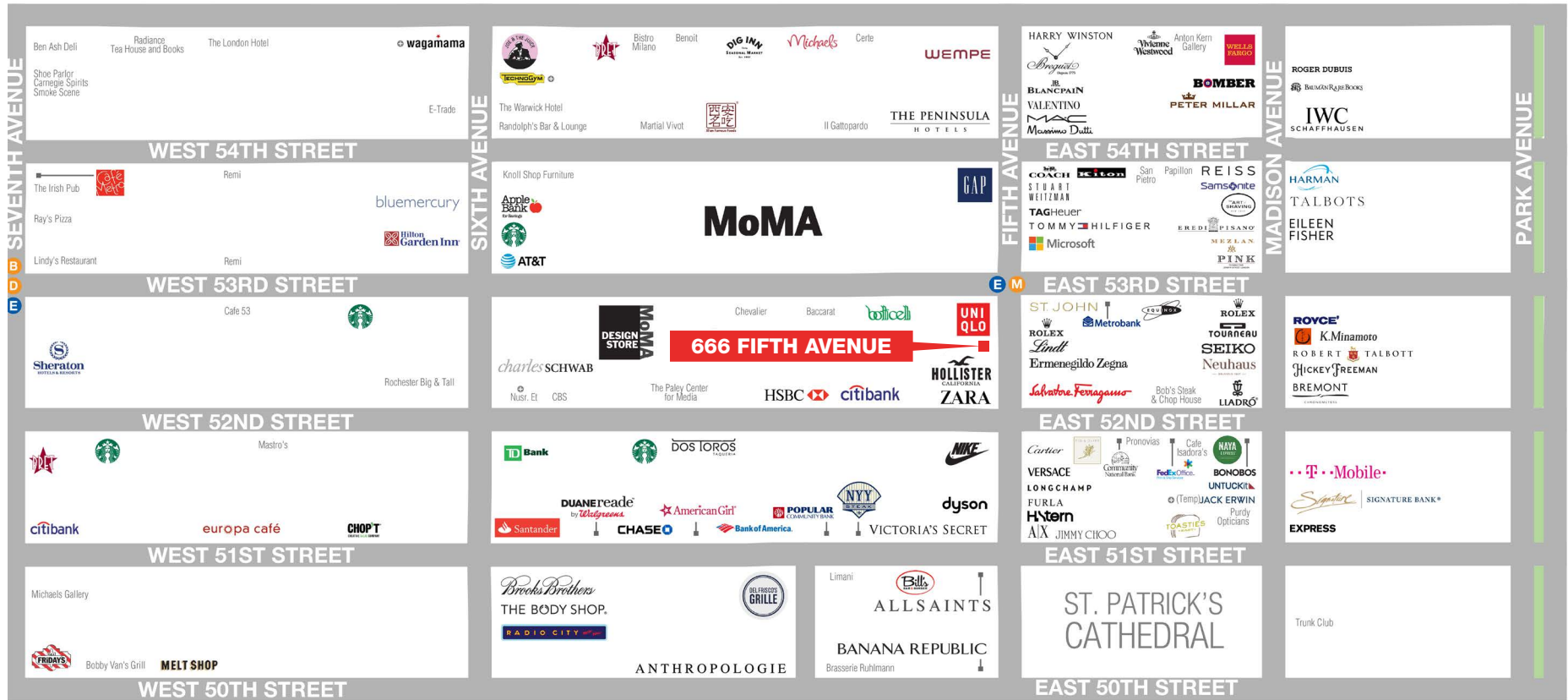
## GROUND FLOOR



# AREA NEIGHBORS



# AREA RETAIL



⊕ COMING SOON

## CONTACT EXCLUSIVE AGENTS

**LUCAS KOOYMAN**  
212.372.2384  
lkooyman@ngkf.com

**JASON PRUGER**  
212.372.2092  
jpruger@ngkf.com

**ADAM WEINBLATT**  
212.372.2103  
aweinblatt@ngkf.com



NGKF.COM

© 2019 NEWMARK KNIGHT FRANK RETAIL. The information contained herein has been obtained from sources deemed reliable but has not been verified and no guarantee, warranty or representation, either express or implied, is made with respect to such information. Terms of sale or lease and availability are subject to change or withdrawal without notice.