

600

14TH STREET

SAN FRANCISCO, CA

+/- 552 SF FITNESS STUDIO FOR LEASE



maven
RETAIL

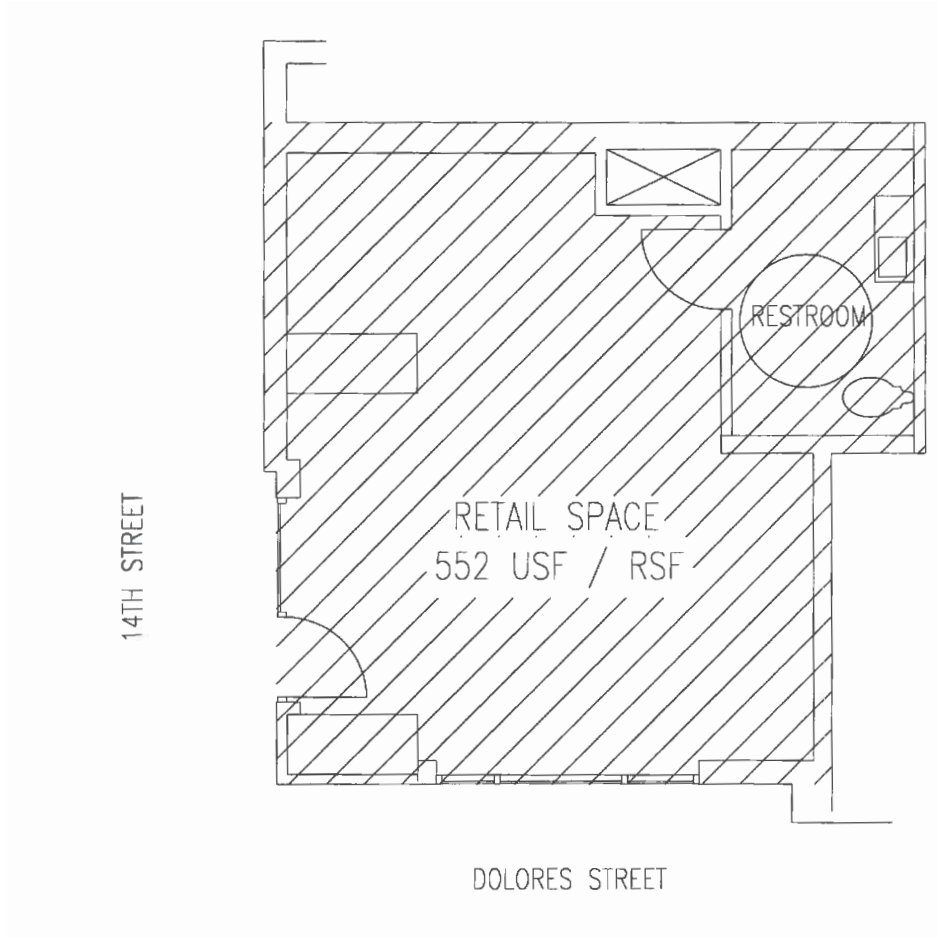
- +/- 552 SF
- Excellent visibility in Market Street Whole Foods Project
- Huge Ceilings
- Corner Location
- Close to public transportation





600

COMPLY WITH
FIRST CLASS
FOR
AUTUMN 2017



WOODHOUSE FISH CO.



KANTINE



ORENCHI BEYOND



ZEITGEIST



CHURCHILL



VERVE COFFEE



ABV





NEIGHBORHOOD



600

14TH STREET
SAN FRANCISCO, CA

maven
RETAIL • OFFICE • INDUSTRIAL

HALEY KLEIN

415.404.7330

haley@mavenproperties.com

BRE #01907308

JOAN RUYLE

office 415.404.7313

joan@mavenproperties.com

BRE #02006025

NOTICE: This information has been secured from sources we believe to be reliable but we make no representations, warranties, express or implied, as to the accuracy of the information. Listing broker has been given enough information to provide only a preliminary interest in the property. The materials are not to be considered fact. The information contained herein is not a substitute for thorough due diligence investigation. References to square footage, zoning, use, or age are approximate. Please contact the San Francisco Planning Department to verify zoning at (415) 558-6378, as neither broker or landlord represent that this space is suitable for your use. Tenant or Buyer must verify the information at their own expense and bears all the risk for any inaccuracies. By receiving these materials you are agreeing to the disclaimers set forth herein. BRE#01878802

466 Green Street Suite #203 | San Francisco, CA 94133 | 415.781.7700