

R

The Rockwell



NEW ROCHELLE | NEW YORK



THE
YOUNG
COMPANIES

THE ROCKWELL

Named after New Rochelle's Norman Rockwell, famed American author, painter and illustrator, The Rockwell is a luxury apartment development located on North Avenue. The Rockwell features 135,000 sq ft of residential living space, and 22,000 sq ft of commercial retail space.

An ideal location in the heart of New Rochelle, The Rockwell is in close proximity to nearby restaurants, parks, Iona College, New Rochelle High School, Montefiore Medical Center, New Rochelle City Hall, Police Station, and Courthouse.

The Rockwell is also a 12 minute walk to the New Rochelle transit center (Metro North, Amtrak, and Bus service) and minutes from I-95 and Hutchinson River Parkway.

RETAIL SPACES AVAILABLE:

- RETAIL SPACE 1: 3,656 SF
- RETAIL SPACE 2: 3,813 SF
- RETAIL SPACE 4: 591 SF





NEW ROCHELLE HIGH SCHOOL
3,334 STUDENTS

IONA COLLEGE
4,000 STUDENTS
BARNES & NOBLE

SITE
THE ROCKWELL
114 RESIDENTIAL UNITS
CVS

Montefiore
New Rochelle
242 BEDS

NEW ROCHELLE TRAIN STATION:
METRO NORTH, AMTRAK

NEW ROC CITY

DEMOGRAPHICS	1 Mile	3 Miles	5 Miles
POPULATION	36,483	190,030	529,363
DAYTIME POPULATION	33,419	159,768	426,434
MED HH INCOME	\$71,809	\$78,487	\$71,326

Market Overview

IONA COLLEGE DORMS

Mobil

DUNKIN'

meineke

ANNO PIZZA

BROOKSIDE PL

Waffle Cafe
PRESTIGE BARBER

ROCBODY Fitness CAFE

B&A froyo

TRENO ST

"THE ILLUSTRATOR" RESIDENTIAL DEVELOPMENT DELIVERY 2022

TACO



CHAUNCEY AVE

Dominos

NORTH AVE

5TH AVE

KUMON

COLIGINI AVE

NEW ROCHELLE CITY HALL

HAMILTON AVE

HAMILTON AVE

NEW ROCHELLE POLICE STATION & COURTHOUSE

18780 ADT

HORTON AVE

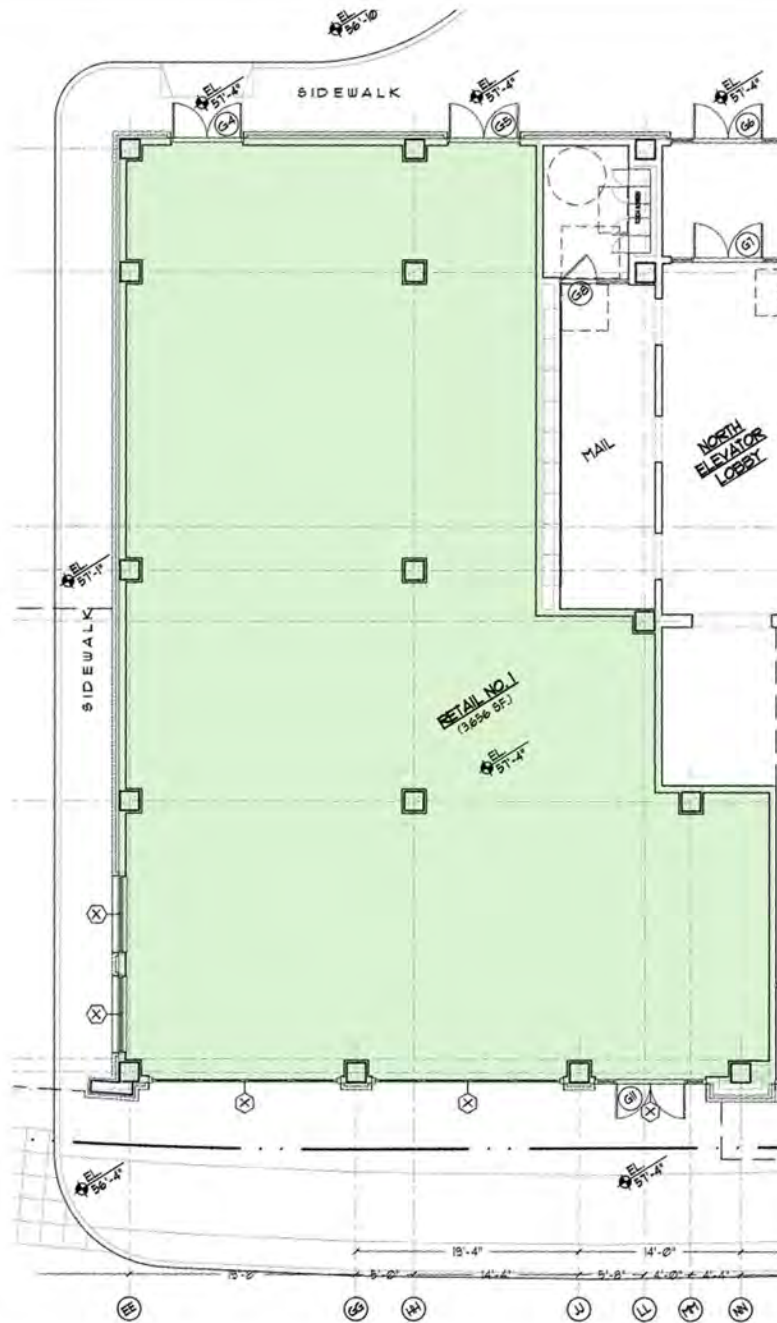
The Market

SITE PLAN



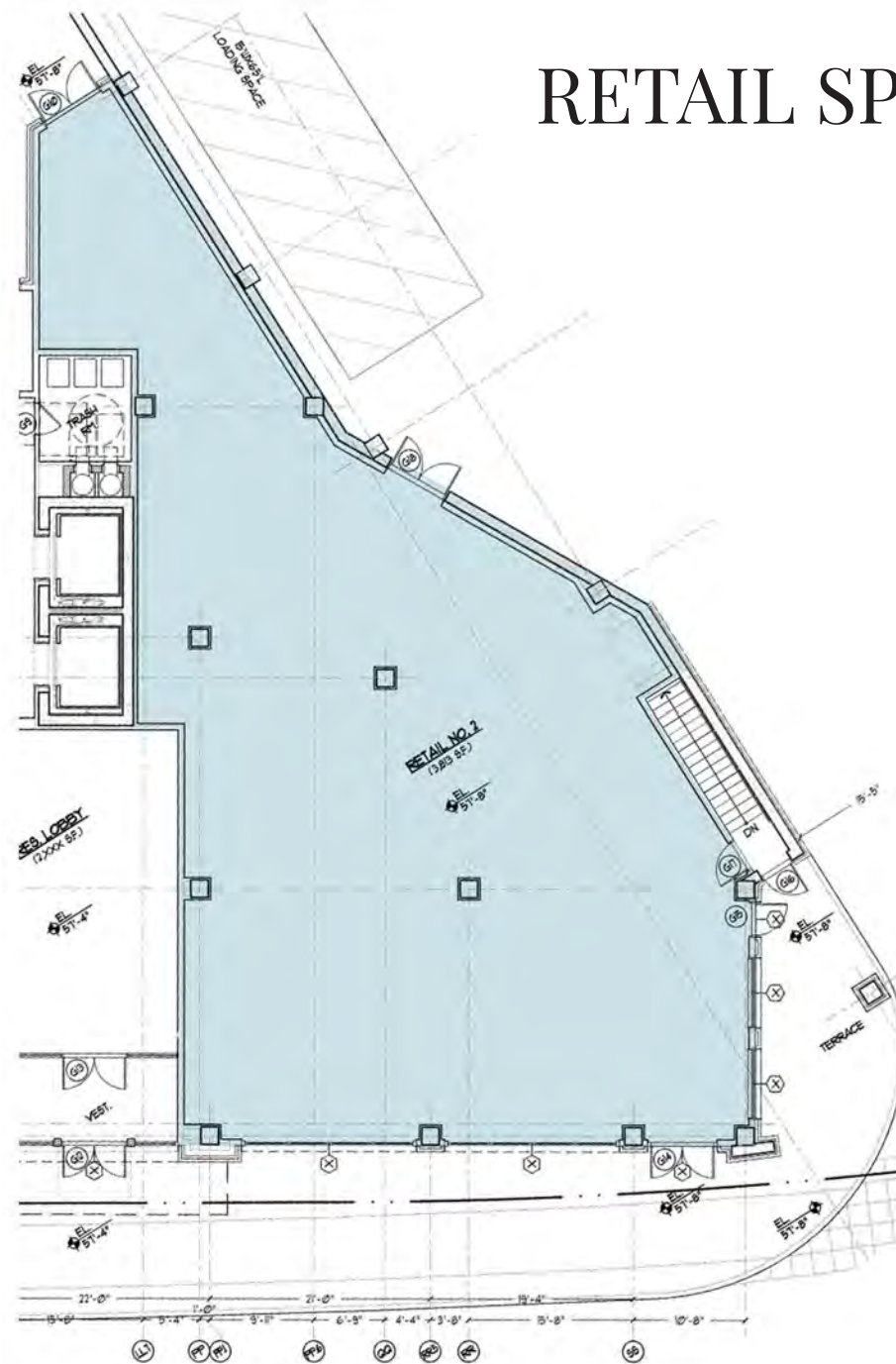
RETAIL SPACE NO. 1

3,656 SF



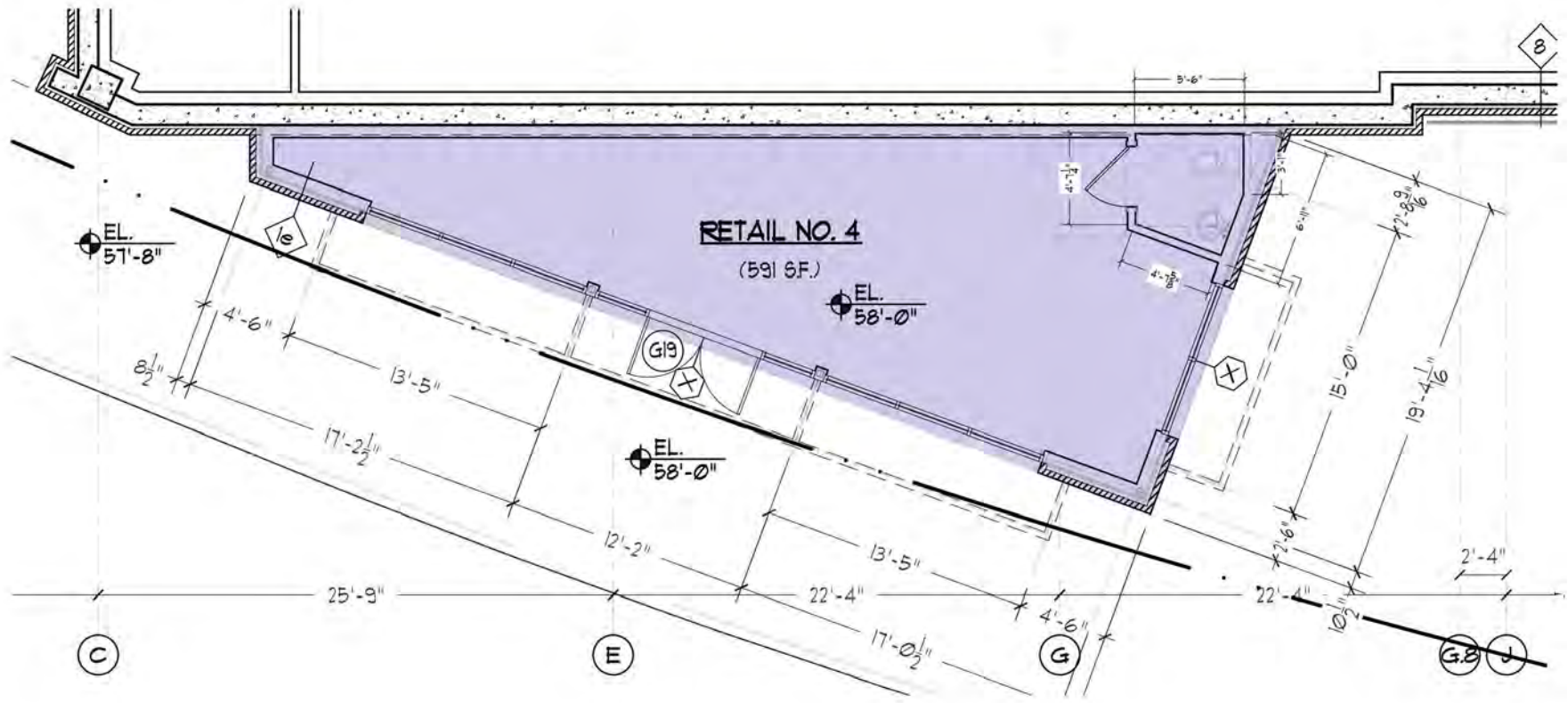
RETAIL SPACE NO. 2

3,813 SF



RETAIL SPACE NO. 4

591 SF





COLLEEN MORRISSEY
cmorrissey@dartco.com
212.687.2400

PETER LYONS
plyons@dartco.com
212.687.2432

MIKE HUBBARD
mhubbard@dartco.com
203.618.1212



270 LAFAYETTE STREET | SUITE 806
New York, NY 10012
www.dartco.com
212.687.2400