

RST Plaza

30817-30845
Pacific Highway S
Federal Way, WA

Newly Renovated Retail Space

1,000 SF retail available -
\$19.00 PSF, gross

5,000 SF available - lower level
Former Church
\$14.00 PSF, gross

Recent building renovations
completed

Ample parking

Yard and storage space
available

Great visibility on Pacific Hwy S

Monument signage available



DEMOGRAPHICS

	1 mile	3 miles	5 miles
Population	14,570	97,386	202,464
Average Household Income	\$47,531	\$61,351	\$60,032

Location

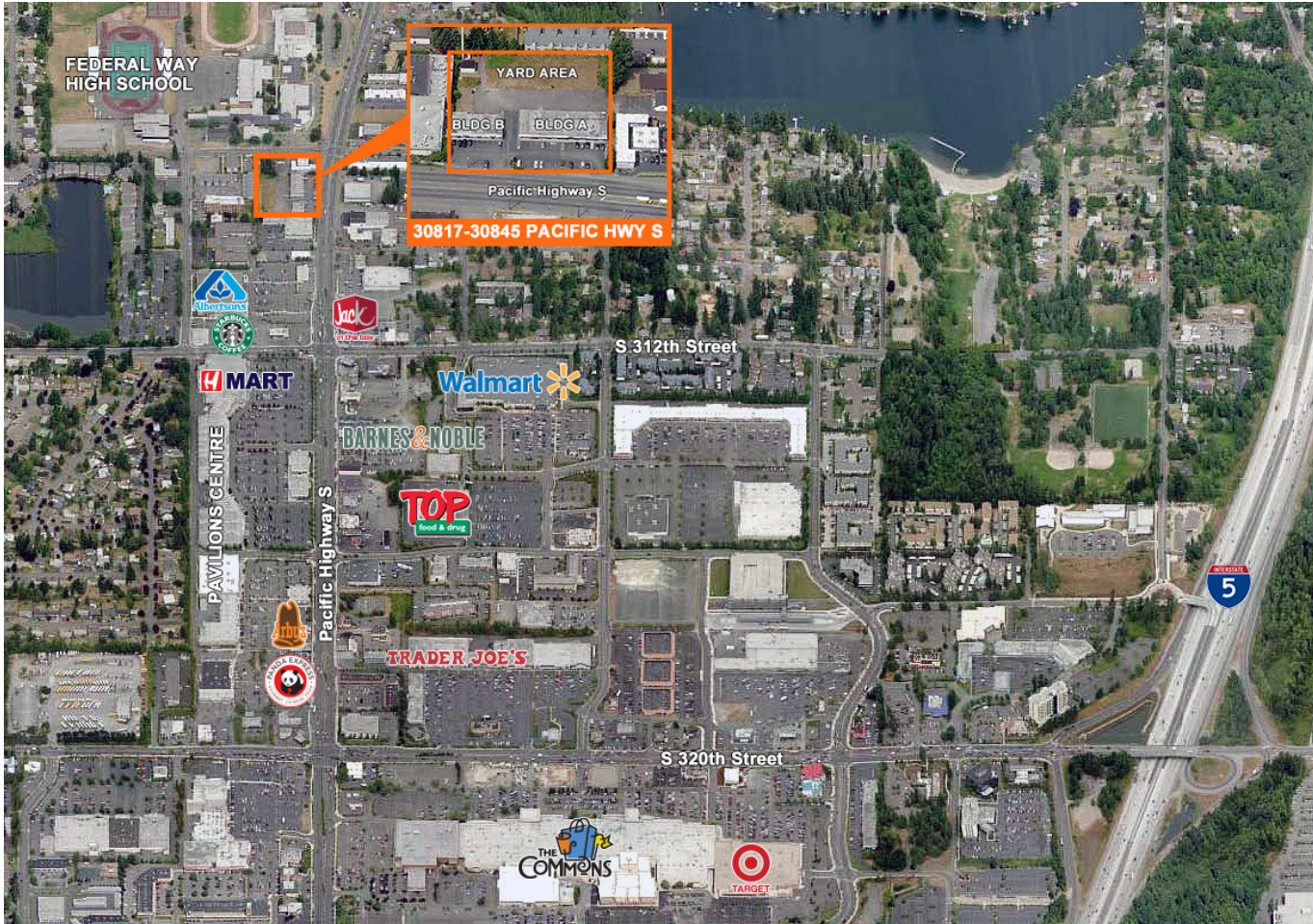


Contact

Cramer Foster
253.722.1423
cfoster@kiddermathews.com

Jeff Kraft
253.722.1405
jkraft@kiddermathews.com

RST Plaza



BUILDING B - Top Floor

#30845	#30839	AVAILABLE 1,000 SF	#30833
--------	--------	-----------------------	--------

BUILDING A - Top Floor

#30821		#30819	#30817
--------	--	--------	--------

Contact

Cramer Foster
253.722.1423
cfoster@kiddermathews.com

Jeff Kraft
253.722.1405
jkraft@kiddermathews.com