



PRIME RETAIL SPACE - BARRY ROAD

6001-6005 NW Barry Road, Kansas City, Missouri

**9,046 SF
END CAP
FOR LEASE**



9,046 SF END CAP SPACE FOR LEASE

DEMOGRAPHICS

	1 mile	3 miles	5 miles
Estimated Population	10,272	51,236	115,675
Avg. Household Income	\$85,156	\$87,236	\$89,185

- Former Pier 1 Imports space that can be demised
- Located on the strong retail corridor of I-29 & NW Barry Road
- Over 700,000 SF of existing retail and restaurants at this intersection
- Approximately 102,000 cars per day at this intersection
- Excellent visibility and access

 **CLICK HERE TO VIEW MORE LISTING INFORMATION**

For More Information Contact:

Exclusive Agents

PHIL PECK, CCIM | 816.412.7364 | ppeck@blockandco.com

DAVID BLOCK | 816.412.7400 | dblock@blockandco.com



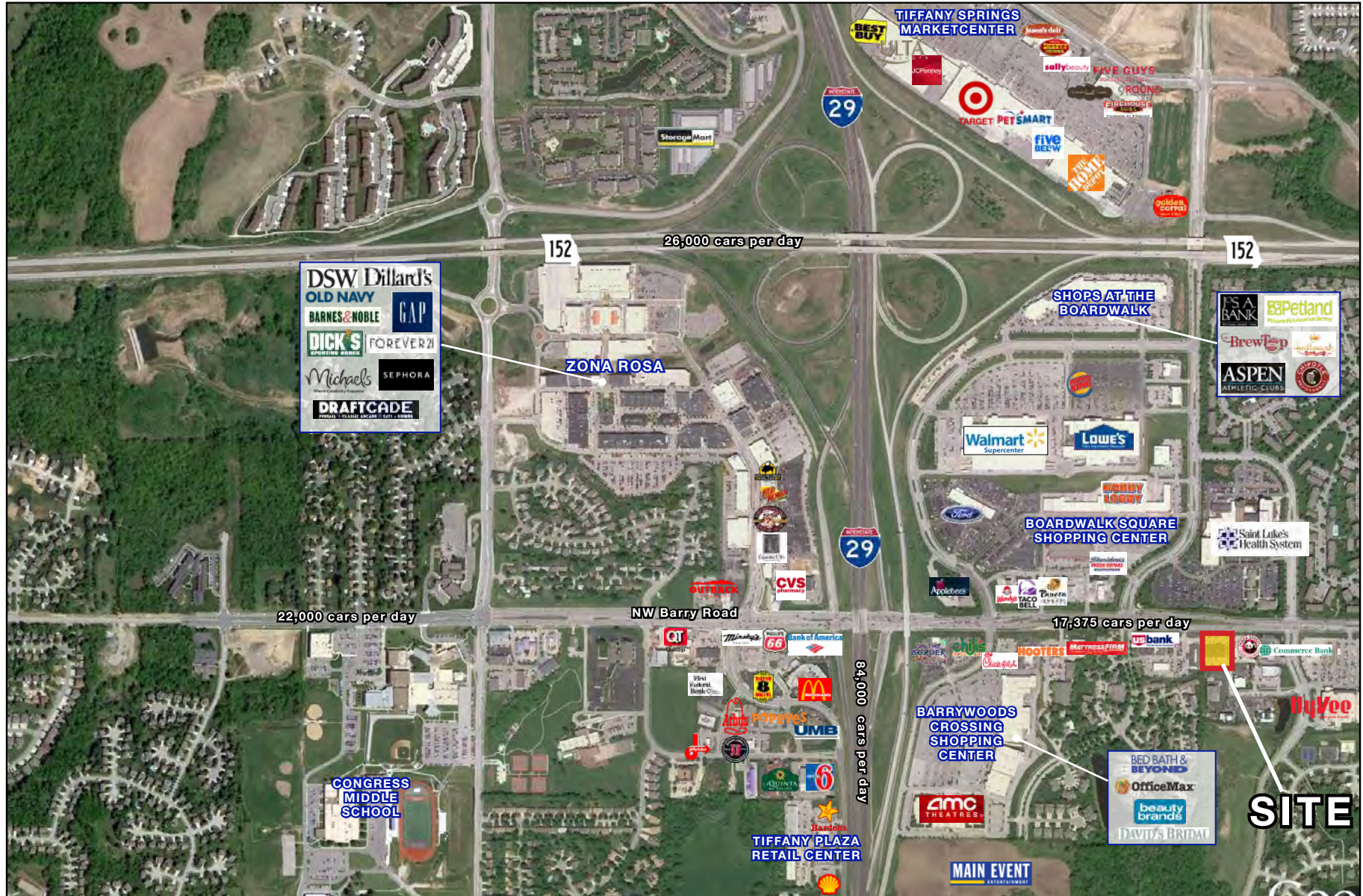


PRIME RETAIL SPACE - BARRY ROAD

6001-6005 NW Barry Road, Kansas City, Missouri

9,046 SF
END CAP
FOR LEASE

AERIAL





PRIME RETAIL SPACE - BARRY ROAD

6001-6005 NW Barry Road, Kansas City, Missouri

9,046 SF
END CAP
FOR LEASE

AERIAL





PRIME RETAIL SPACE - BARRY ROAD

6001-6005 NW Barry Road, Kansas City, Missouri

9,046 SF
END CAP
FOR LEASE

DRONE AERIAL





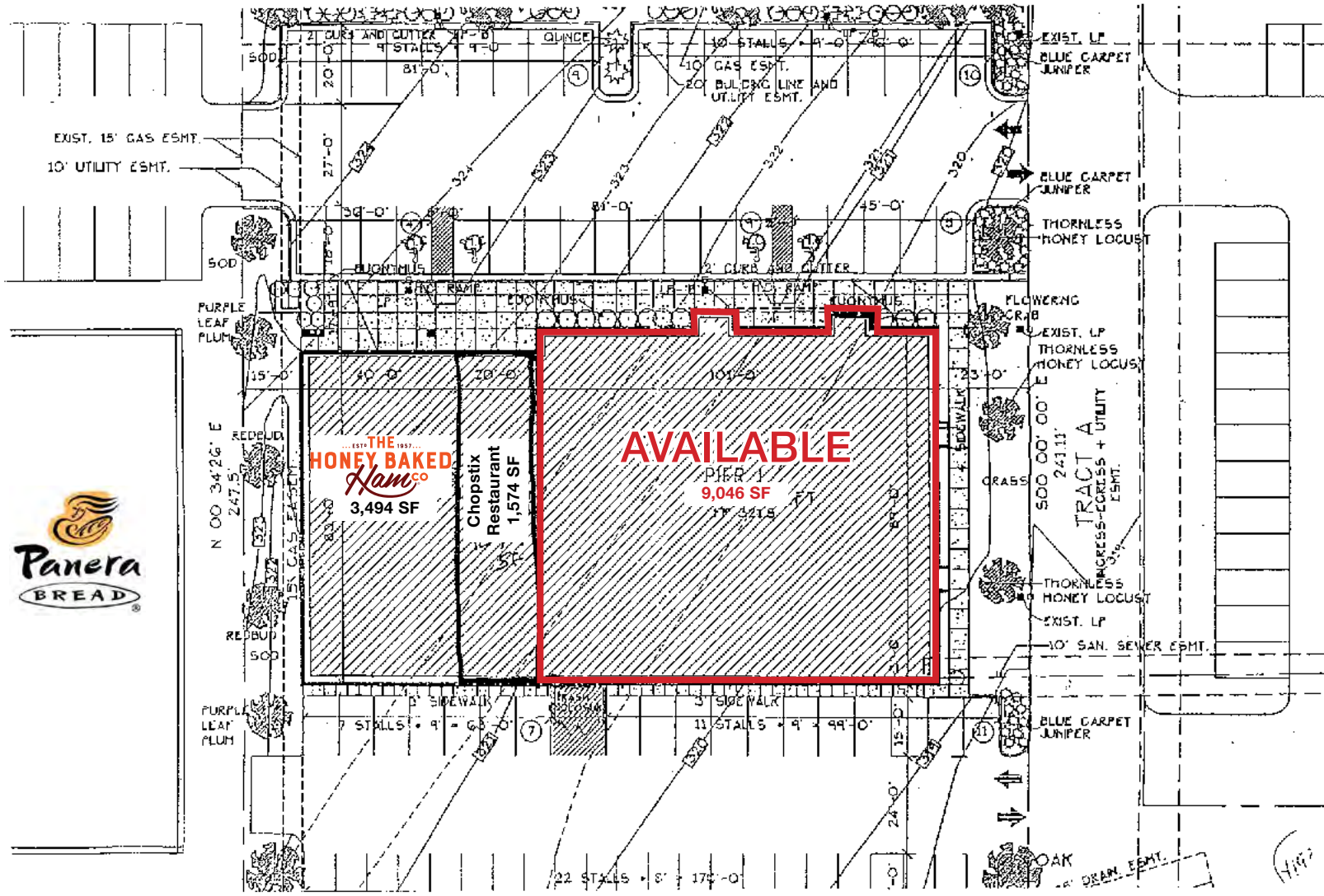
PRIME RETAIL SPACE - BARRY ROAD

6001-6005 NW Barry Road, Kansas City, Missouri

9,046 SF
END CAP
FOR LEASE

PLAN

NW Barry Road 17,375 cars per day



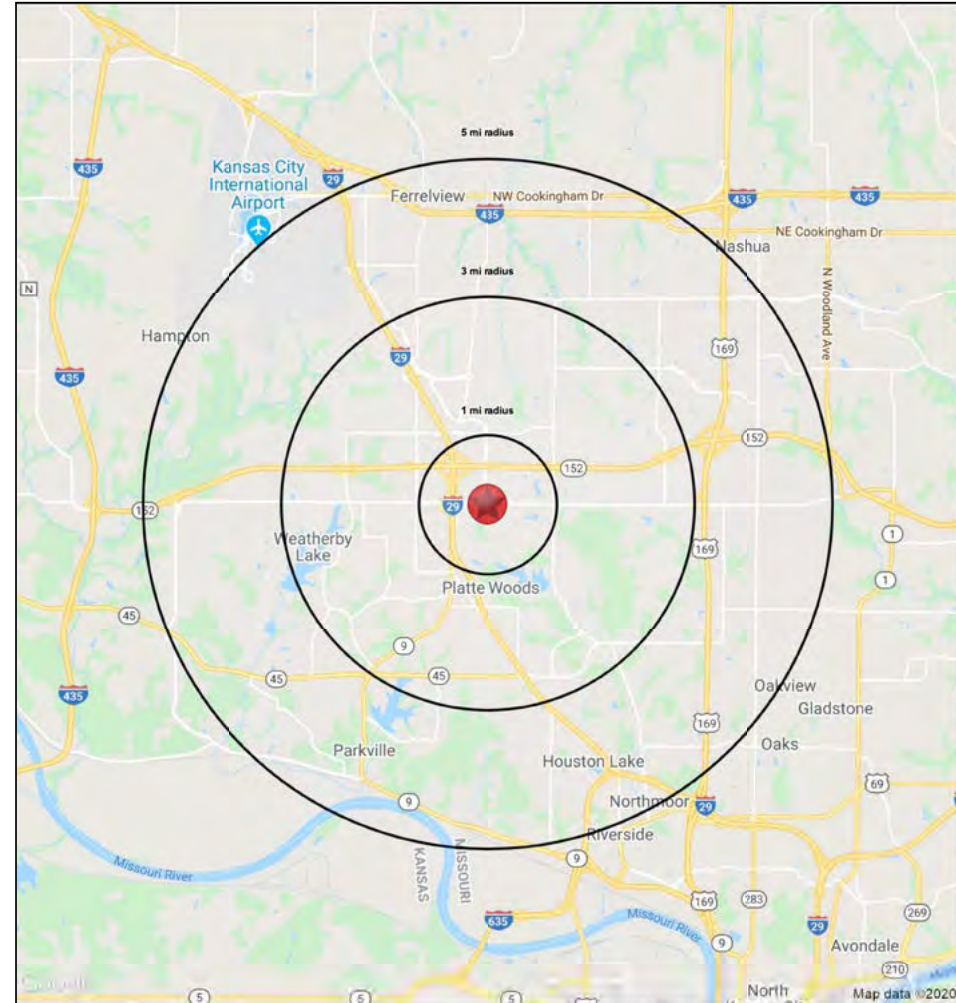
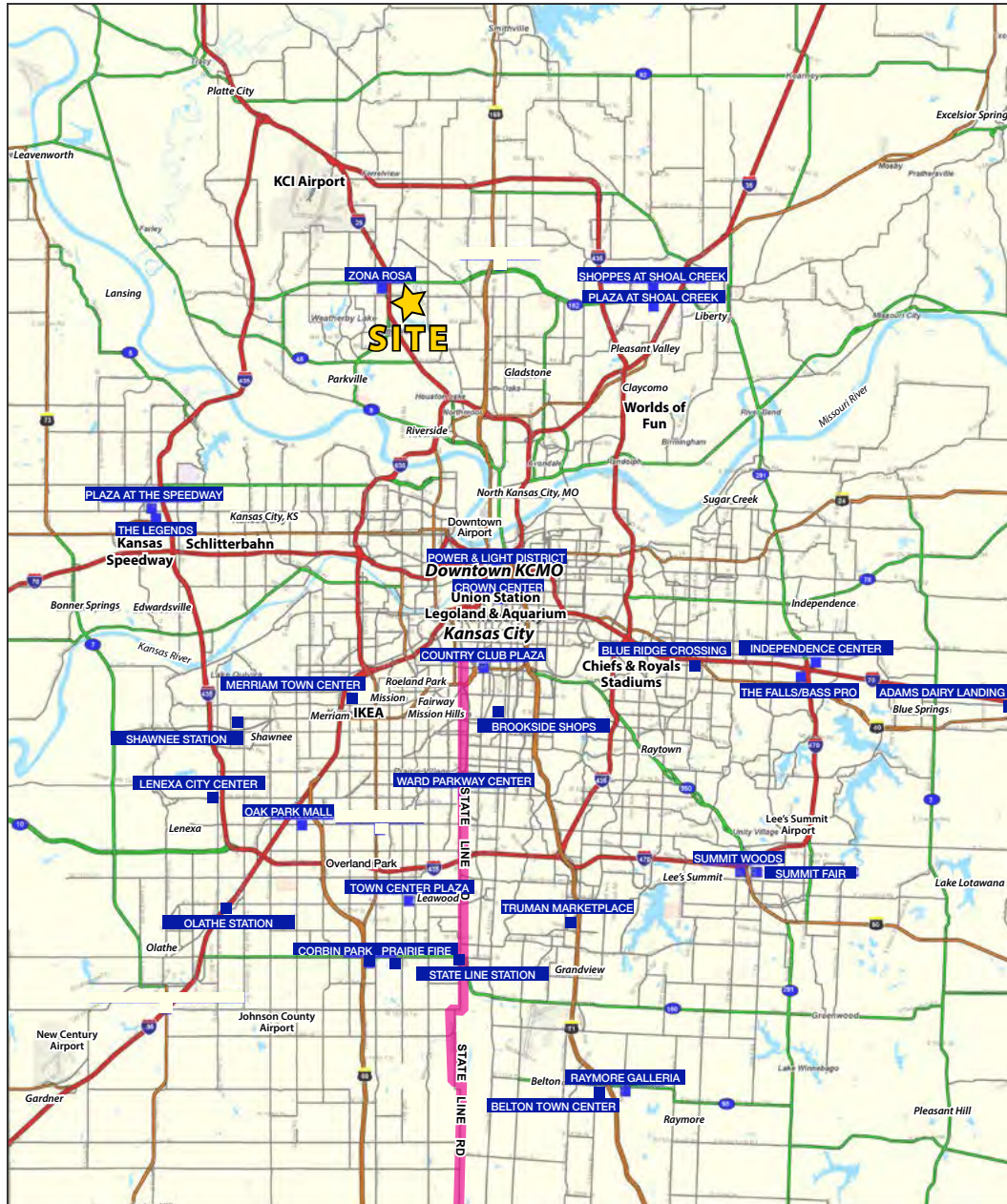
All information furnished regarding property for sale or lease is from sources deemed reliable, but no warranty or representation is made as to the accuracy thereof and the same is subject to errors, omissions, changes of prices, rental or other conditions, prior sale or lease or withdrawal without notice.



PRIME RETAIL SPACE - BARRY ROAD

6001-6005 NW Barry Road, Kansas City, Missouri

9,046 SF
END CAP
FOR LEASE





PRIME RETAIL SPACE - BARRY ROAD

6001-6005 NW Barry Road, Kansas City, Missouri

**9,046 SF
END CAP
FOR LEASE**

6001-6005 NW Barry Road		1 mi radius	3 mi radius	5 mi radius
Kansas City, MO 64154				
POPULATION	2019 Estimated Population	10,272	51,236	115,675
	2024 Projected Population	11,200	55,649	125,274
	2010 Census Population	9,455	44,748	101,396
	2000 Census Population	7,824	35,406	87,052
	Projected Annual Growth 2019 to 2024	1.8%	1.7%	1.7%
	Historical Annual Growth 2000 to 2019	1.6%	2.4%	1.7%
	2019 Median Age	35.9	37.0	37.2
HOUSEHOLDS	2019 Estimated Households	4,506	21,882	47,515
	2024 Projected Households	4,778	23,094	49,940
	2010 Census Households	4,176	19,285	41,847
	2000 Census Households	3,532	14,927	35,326
	Projected Annual Growth 2019 to 2024	1.2%	1.1%	1.0%
	Historical Annual Growth 2000 to 2019	1.5%	2.5%	1.8%
RACE AND ETHNICITY	2019 Estimated White	71.2%	79.0%	79.9%
	2019 Estimated Black or African American	16.8%	11.1%	10.0%
	2019 Estimated Asian or Pacific Islander	5.1%	4.3%	3.8%
	2019 Estimated American Indian or Native Alaskan	0.5%	0.5%	0.5%
	2019 Estimated Other Races	6.3%	5.1%	5.7%
	2019 Estimated Hispanic	8.0%	7.4%	7.8%
INCOME	2019 Estimated Average Household Income	\$85,156	\$87,236	\$89,185
	2019 Estimated Median Household Income	\$69,773	\$76,821	\$76,790
	2019 Estimated Per Capita Income	\$37,356	\$37,273	\$36,671
EDUCATION (AGE 25+)	2019 Estimated Elementary (Grade Level 0 to 8)	2.4%	1.2%	1.7%
	2019 Estimated Some High School (Grade Level 9 to 11)	1.4%	2.5%	4.0%
	2019 Estimated High School Graduate	19.6%	18.8%	22.0%
	2019 Estimated Some College	21.7%	23.7%	24.0%
	2019 Estimated Associates Degree Only	10.5%	9.5%	8.9%
	2019 Estimated Bachelors Degree Only	28.5%	27.3%	24.8%
	2019 Estimated Graduate Degree	15.8%	17.1%	14.7%
BUSINESS	2019 Estimated Total Businesses	824	1,635	3,788
	2019 Estimated Total Employees	9,643	18,392	41,965
	2019 Estimated Employee Population per Business	11.7	11.2	11.1
	2019 Estimated Residential Population per Business	12.5	31.3	30.5

