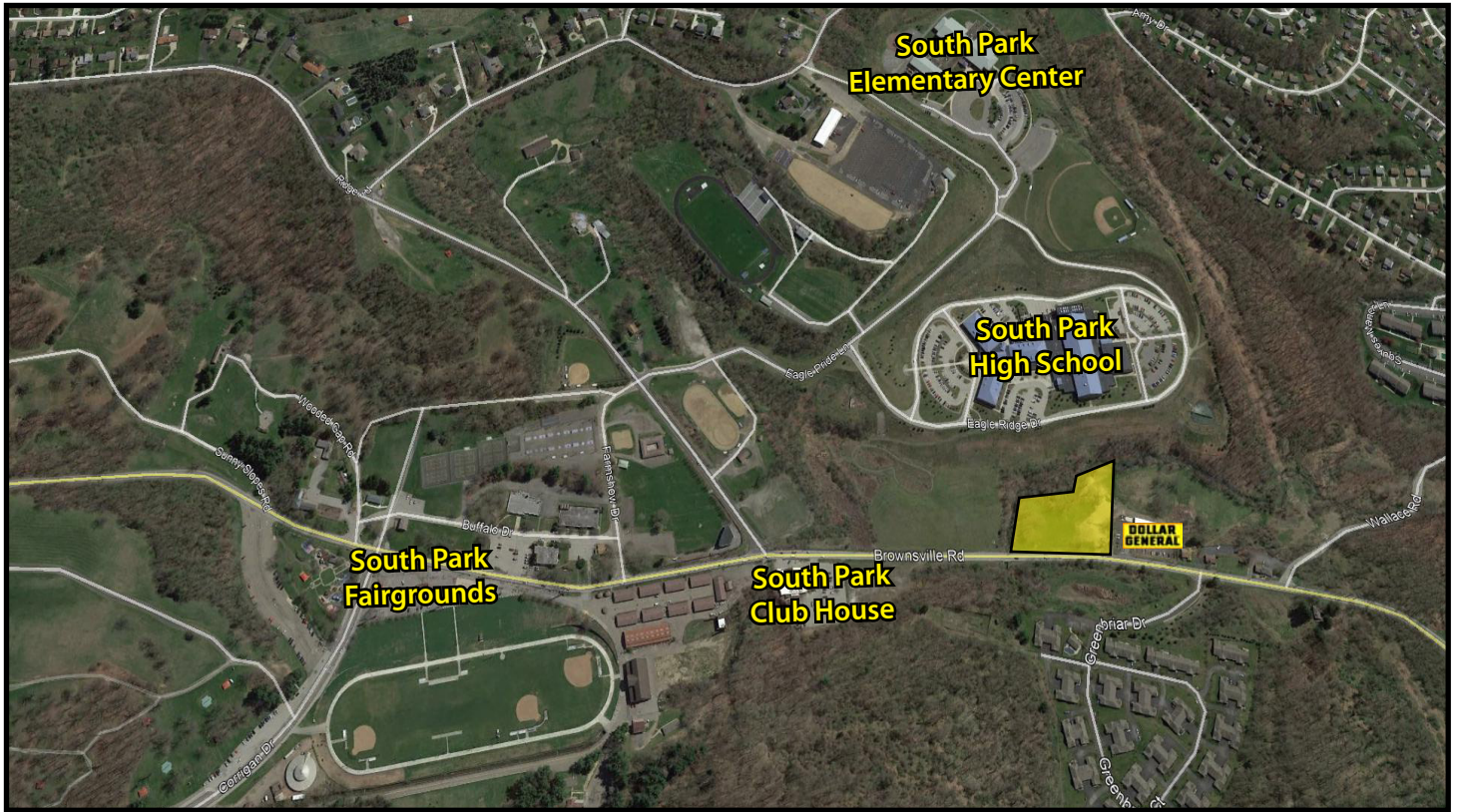


Brownsville Road

South Park, PA 15129



Site Size

- 2.5780 Acres

Parcel ID

- 770-P-112
(Allegheny County)

Sale Price

\$399,000

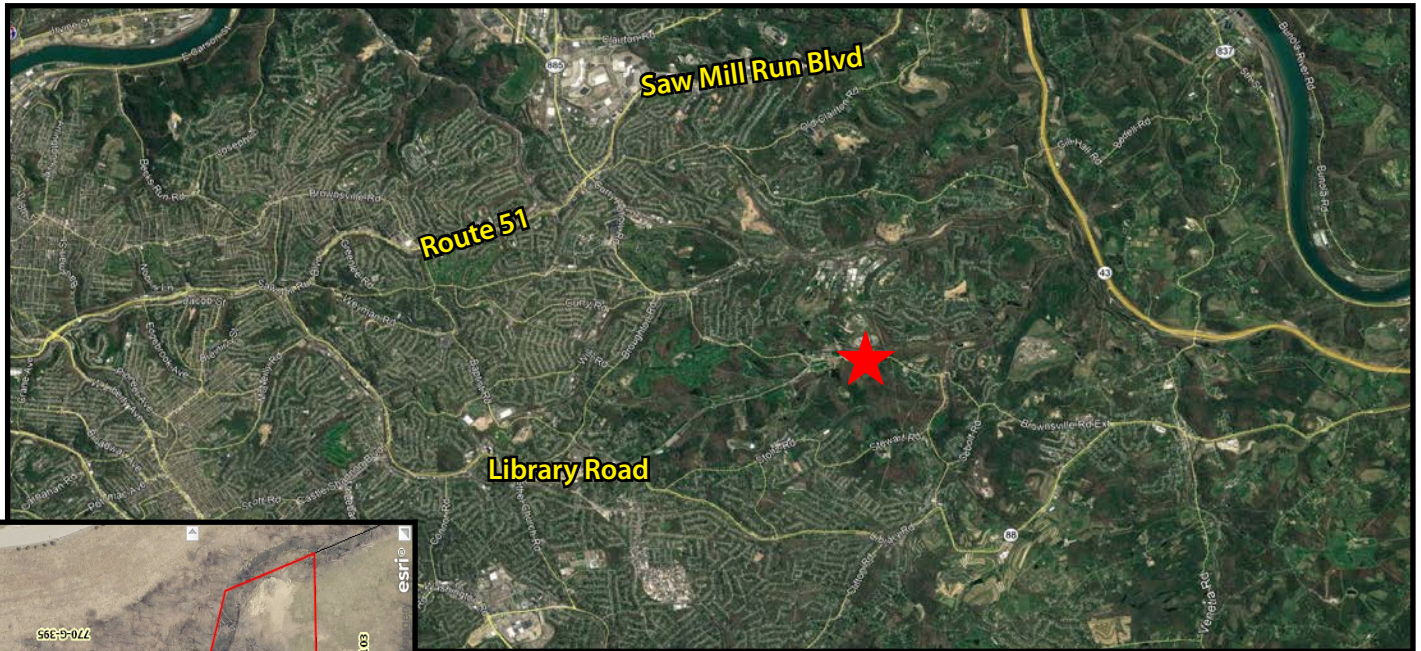
Reduced \$339,000

Property Highlights

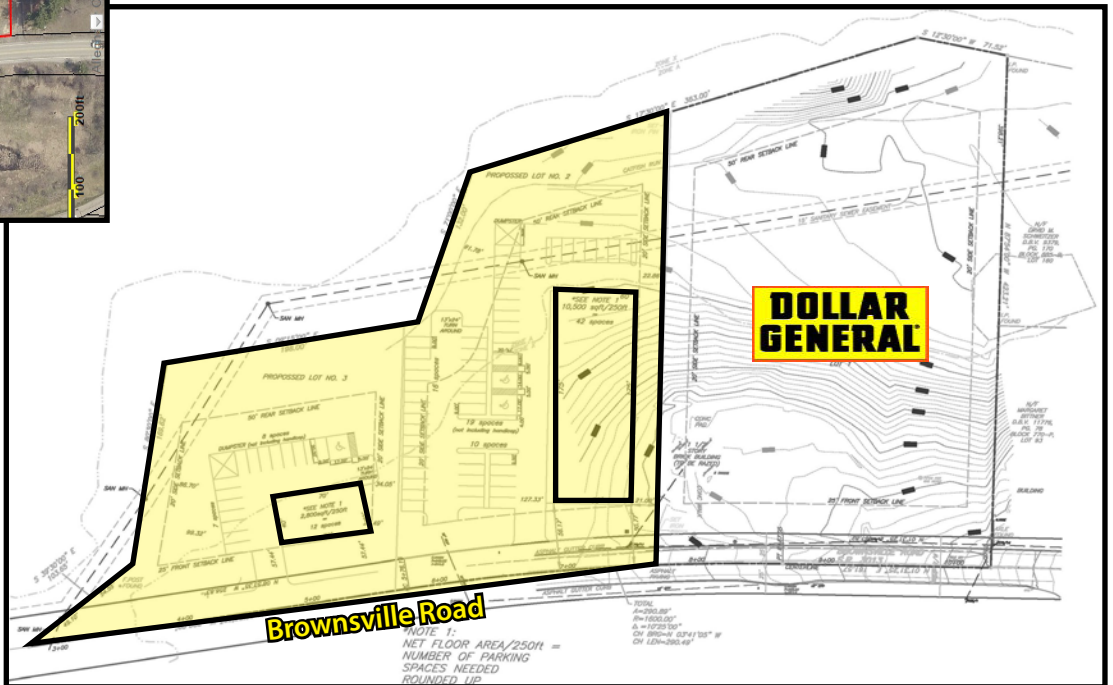
- 425' Frontage
- All public utilities on-site
- Next to South Park fairgrounds and South Park High School
- Average Traffic Count - Brownsville Road - 10,731 vehicles/day
- Ideal for retail, service office, and medical
- Zoning - C-2 (Shopping Center District)

DEMOGRAPHICS

	1-MILE	3-MILE	5-MILE
Population	4,554	42,541	125,217
Median HH Income	\$73,953	\$74,695	\$72,706



Concept Plan - 2 Buildings - 13,200 SF



For more information please contact:

Joseph F. Tosi
Vice President

Oxford Realty Services, Inc.
412.261.0200, ext 3471
jtosi@oxfordrealtyservices.com

Taylor N. Iaboni
Associate

Oxford Realty Services, Inc.
412.261.0200, ext 3493
tiaboni@oxfordrealtyservices.com

OXFORD
REALTY SERVICES, INC.

2545 Railroad Street - Suite 300
Pittsburgh, PA 15222
www.oxfordrealtyservices.com

Although all information furnished regarding property for sale, rental or financing is from sources deemed reliable, such information has not been verified, and no express representation is made nor is any to be implied as to the accuracy thereof, and it is submitted subject to errors, omissions, change of price, rental or other conditions, prior sale, lease or financing, or withdrawal without notice. Rental terms and all dimensions are approximate and specifications are subject to change without notice. Oxford Realty Services, Inc., an independent real estate services company.