



PRICE REDUCTION

Opportunity

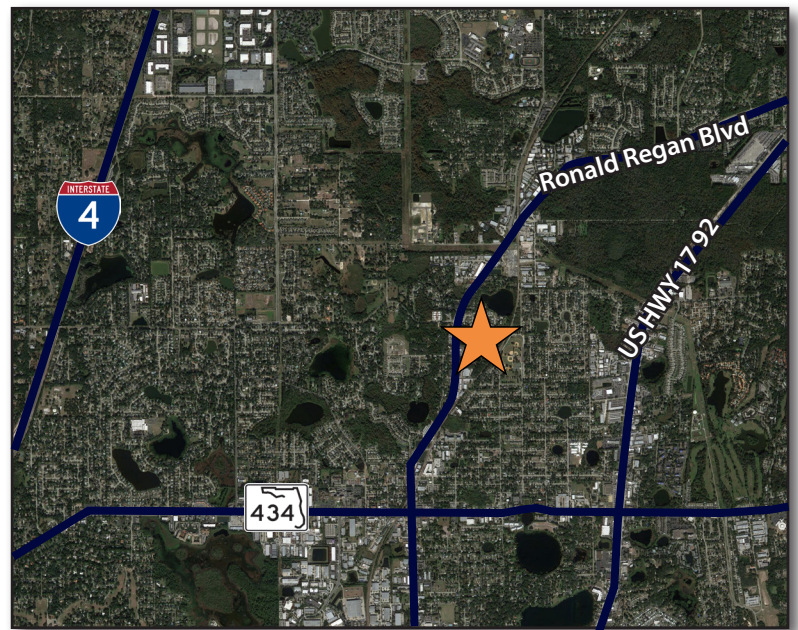
- 6,900± sf one-story office/warehouse building built in 1980
- Zoned IND Seminole County
- High end office finishes throughout
- Grade level loading doors
- Ability to subdivide, separately metered spaces
- Heavy HVAC capacity

Location

- Located on the hard corner of Applewood Drive and Baywood Avenue, off of Ronald Reagan Boulevard
- In close proximity to major thoroughfares such as I-4, US 17 92, and SR 434

Pricing

- **\$799,000**



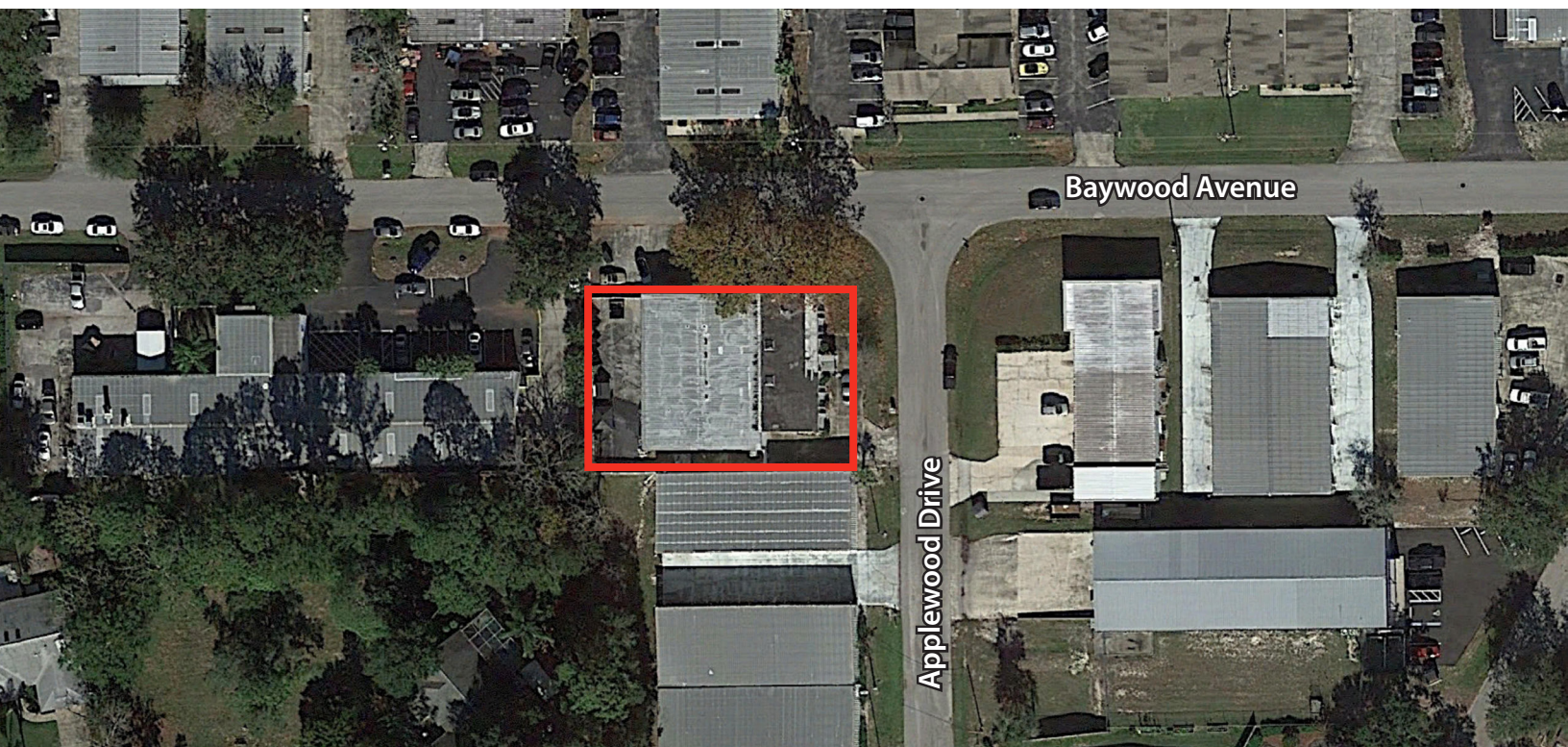
Lisa Bailey, SIOR, Principal
D 407 440 6645
C 407 595 9233
lisa.bailey@avisonyoung.com

Nathan Eissler, CCIM, SIOR, Principal
D 407 440 6658
C 407 342 7494
nathan.eissler@avisonyoung.com

135 W Central Boulevard
Suite 700
Orlando, FL 32801
407 219 3500

For Sale - Industrial Building

131 Applewood Dr, Longwood, FL 32750

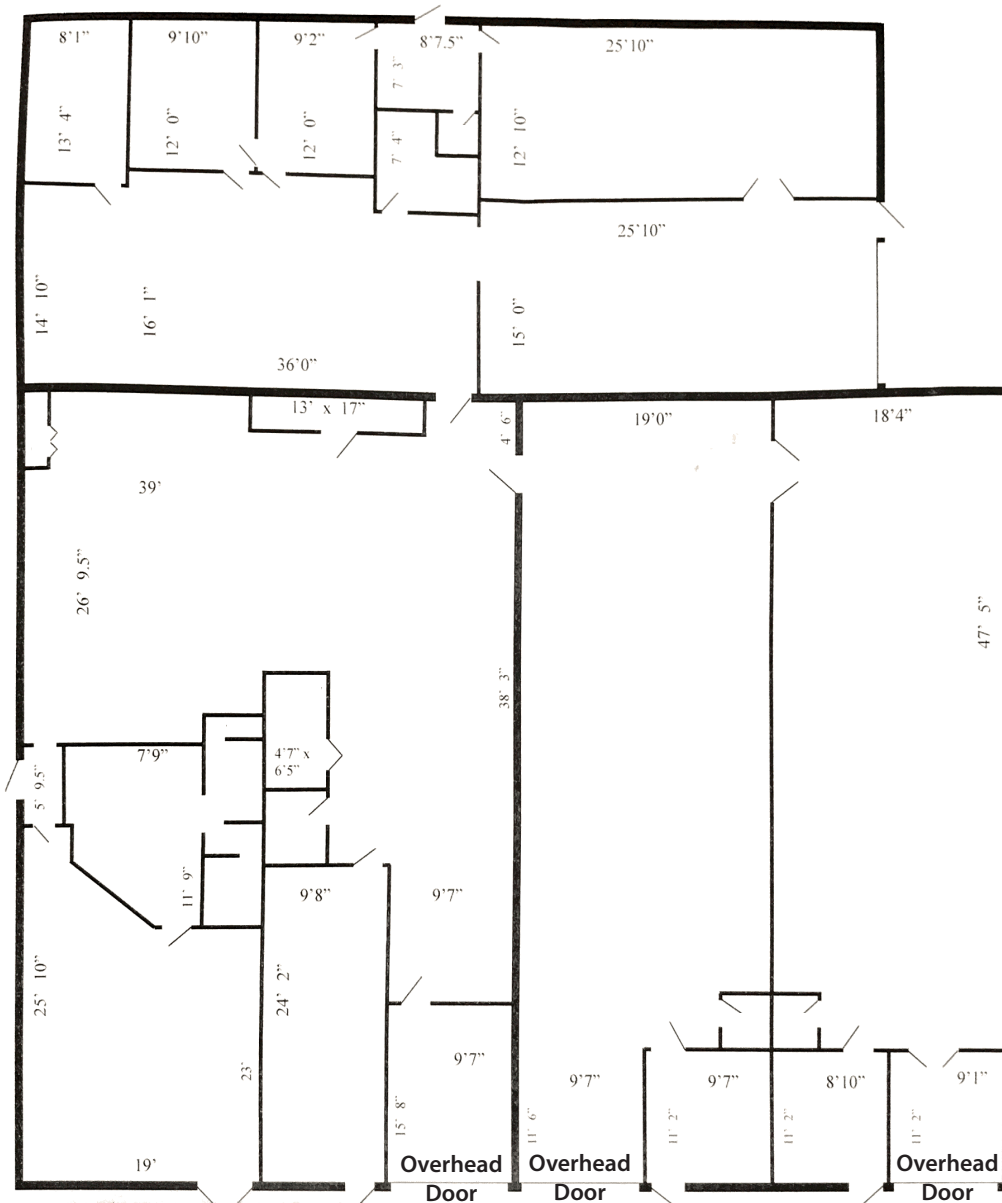


Lisa Bailey, SIOR, Principal
D 407 440 6645
C 407 595 9233
lisa.bailey@avisonyoung.com

Nathan Eissler, CCIM, SIOR, Principal
D 407 440 6658
C 407 342 7494
nathan.eissler@avisonyoung.com

135 W Central Boulevard
Suite 700
Orlando, FL 32801
407 219 3500

Floorplan



LOADING AREA

Lisa Bailey, SIOR, Principal
 D 407 440 6645
 C 407 595 9233
 lisa.bailey@avisonyoung.com

Nathan Eissler, CCIM, SIOR, Principal
 D 407 440 6658
 C 407 342 7494
 nathan.eissler@avisonyoung.com

135 W Central Boulevard
 Suite 700
 Orlando, FL 32801
 407 219 3500