

Downtown San Carlos

+1,600 SF - 3,180 SF Highly Visible Retail

+1,290 SF Rare 2nd Generation Restaurant

SITE



SIAMESE
KITCHEN

ten toes
children's shoes

641



LOCKEHOUSE

633 AND 635 LAUREL STREET — DOWNTOWN SAN CARLOS

PROPERTY INFO

AVAILABLE SPACES	633 Laurel Street: ±3,180 SF (Could be demised to ±1,600 SF) 635 Laurel Street: ±1,290 SF
TRAFFIC COUNT	26,000 ADT on El Camino Real
ASKING RENT	Inquire with Broker

PROPERTY HIGHLIGHTS

PROPERTY HIGHLIGHTS	<p>// Highly visible retail and 2nd Generation restaurant space in the heart of DT San Carlos</p> <p>// Heavy pedestrian foot traffic</p> <p>// New housing units within 1 block Adjacent to Caltrain</p> <p>// Existing hood and restaurant infrastructure in place</p>
----------------------------	---

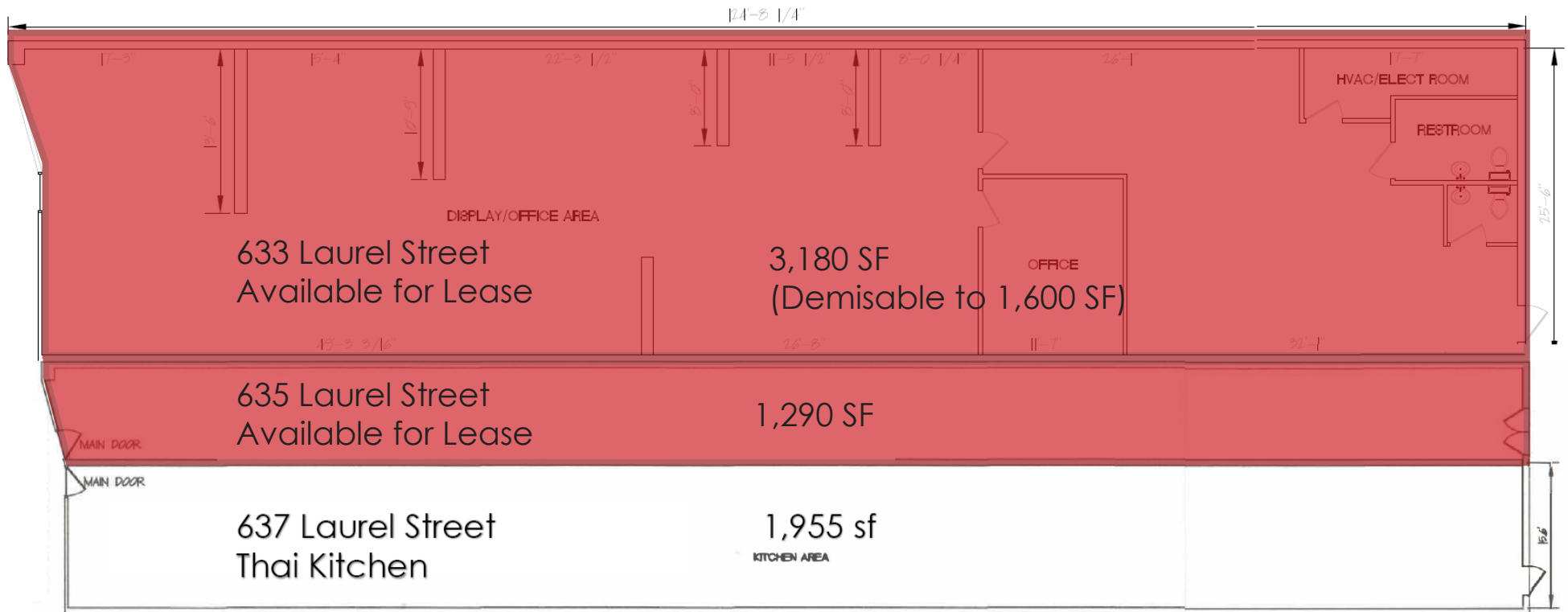
DEMOGRAPHICS

	1 MILE	3 MILES	5 MILES
POPULATION	16,932	142,388	286,092
AHHI	\$194,528	\$189,347	\$187,982
DAYTIME POPULATION	21,011	91,081	191,981

THE ABOVE INFORMATION, WHILE NOT GUARANTEED, HAS BEEN SECURED FROM SOURCES WE BELIEVE TO BE RELIABLE. SUBMITTED SUBJECT TO ERROR, CHANGE OR WITHDRAWAL. AN INTERESTED PARTY SHOULD VERIFY THE STATUS OF THE PROPOERT



SITE PLAN



AERIAL



KING CHUAN

San Mateo County
TRANSIT DISTRICT

SAN CARLOS AVENUE

Starbucks

HOUSE BAGELS

EL CAMINO REAL - 26,000 ADT

ten toes
children shoes

Sisie Cakes

PATXIS PIZZA

Peet's Coffee

LAUREL STREET

MAVERICK JACK'S

WELLS FARGO

Sneakers

Peppers

PIACERE

UPS

SPASSO
RISTORANTE & WINE BAR

PRANZI

UnionBank

DTD & W'S

Footwear.ec

Bank of America

Bank of America

Bank of America

Bank of America

Bank of America

Bank of America

82

Old County Rd

Hall St

Terminal Way

Laurel St

El Camino Real

McGue Ave

E San Carlos Ave

Wain St

PARKING



Over 600 Parking Stalls within a 3-minute walk



102 STALLS

57 STALLS

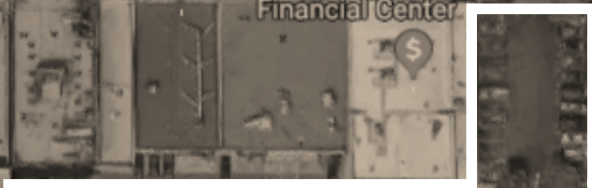
24 STALLS



107 STALLS



**WHEELER PLAZA
252 STALLS
NOW OPEN**



70 STALLS

NEARBY TENANTS



NEIGHBORS



LEASING CONTACT

AARON DAN

// MANAGING DIRECTOR

// (650) 548-2676

// AARON@LOCKEHOUSE.COM

