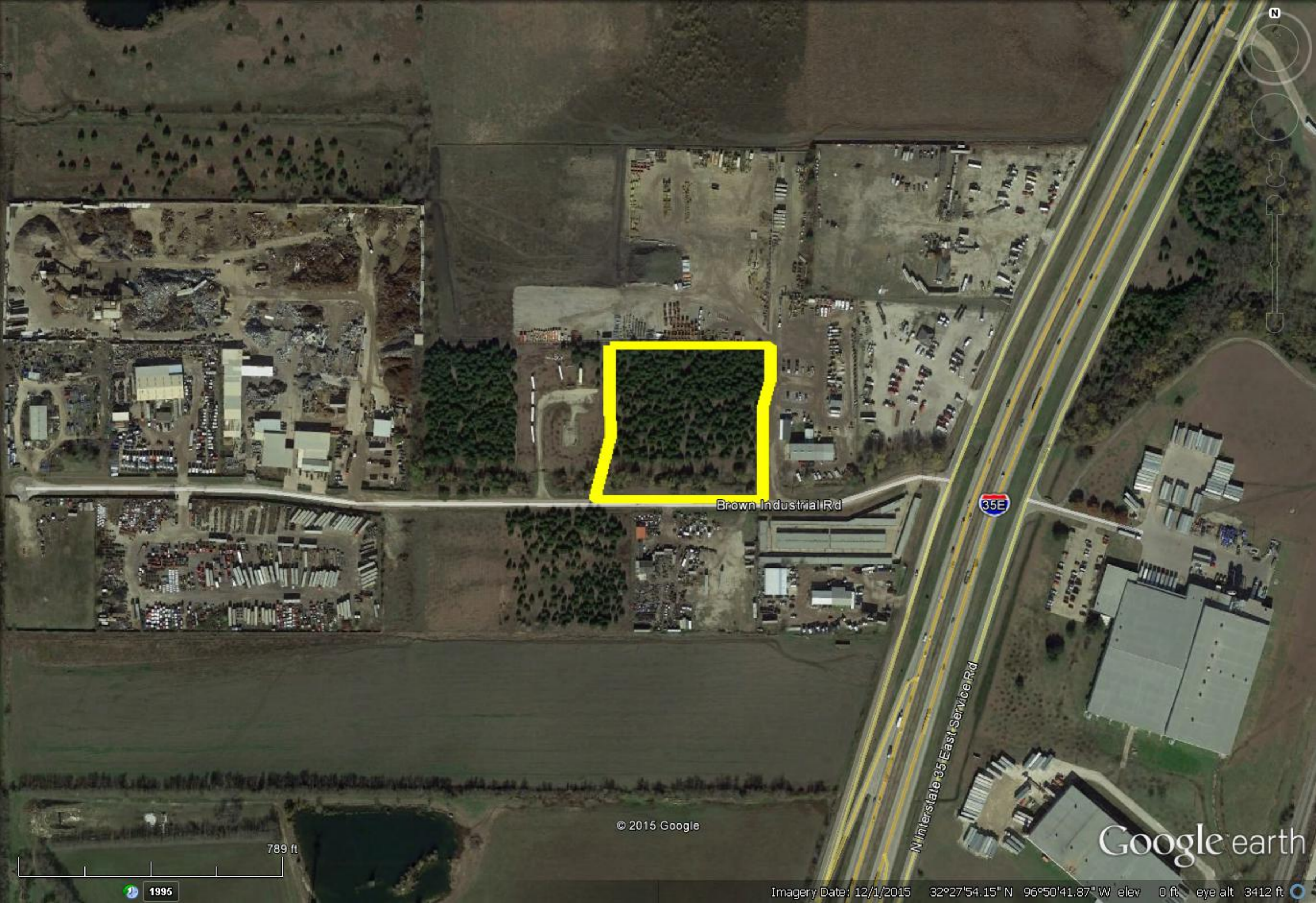


**BROWN INDUSTRIAL PARK
INDUSTRIAL LAND
5± Acres
Waxahachie, Texas**

- LOCATION:** The subject property is located on the north side of Brown Industrial Rd., approximately 1/10 of a mile west of I-35E in Waxahachie.
- SIZE:** 5± Acres
- ZONED:** Heavy Industrial
- UTILITIES:** Electricity is available. No water or sewer available.
- FRONTAGE:** Brown Industrial Rd. – 505± ft.
- PRICE:** \$150,000.00
- COMMENTS:** Great access to I-35E. Heavy Industrial zoning allows for many uses including automotive, trucking, etc.

*For More Information
Call*

**Joe Rust Company
Lance Rust
469-337-4627**



Brown Industrial Rd

35E

N Interstate 35 East Service Rd

© 2015 Google

Google earth



1995

Imagery Date: 12/1/2015 32°27'54.15" N 96°50'41.87" W elev 0 ft eye alt 3412 ft



Brown Industrial Rd

35E

N Interstate 35 East Service Rd

© 2015 Google

Google earth

381 ft

1995

Imagery Date: 12/1/2015 32°27'54.02" N 96°50'37.93" W elev 0 ft eye alt 1647 ft



Red Oak

E Ovilla Rd

67

U.S. Hwy 67

Hwy 77

S Central Blvd

2377

342

1387

Midlothian

SITE

Butcher Rd

387

663

664

Waxahachie

35E

© 2015 Google

Google earth



