

# Grissom Fee Fee

2345-2391 Grissom Drive

St. Louis, MO 63146

## 1,705 - 6,005 SF OFFICE / WAREHOUSE SPACE AVAILABLE FOR LEASE



- **2,150 SF Available**
- 2347 Grissom Drive
- 40% office finish
- Grade level drive-in

- **1,705 SF Available**
- 2351 Grissom Drive
- 40% office finish
- Double man-door

- **4,300 SF Available**
- 2353-2355 Grissom Drive
- 25% office finish
- Grade level drive-ins

- **2351, 2353 and 2355 Grissom Drive may be combined to achieve a total of 6,005 SF**
- 12' clear warehouse ceiling height
- Located at the corner of Fee Fee Road and Grissom Drive
- Easy access to I-270 via Page Ave
- Within close proximity to Westport Plaza offering a variety of dining, entertainment and lodging venues
- **LEASE RATE: \$5.75 PSF NNN**

## HUTKIN DEVELOPMENT COMPANY

10829 Olive Boulevard  
Suite 200  
St. Louis, MO 63141

Telephone 314.872.9140  
FAX 314.872.9001

Visit our website:  
[www.hutkin.com](http://www.hutkin.com)

### CONTACT

Tony Giarratano  
[tony@hutkin.com](mailto:tony@hutkin.com)  
Direct 314.708.4922  
Cell 314.276.2352

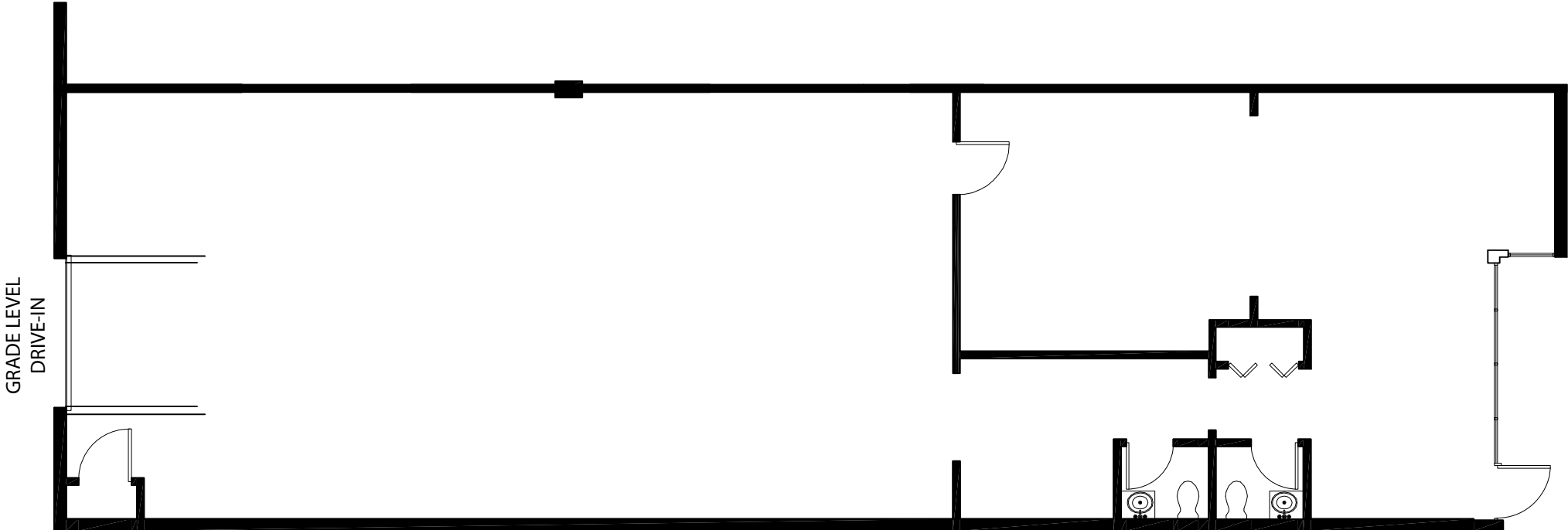
Bo Keefer  
[bkeefer@hutkin.com](mailto:bkeefer@hutkin.com)  
Direct 314.708.1258  
Cell 314.973.1242

# Grissom Fee Fee

2345-2391 Grissom Drive

St. Louis, MO 63146

## 1,705 - 6,005 SF OFFICE / WAREHOUSE SPACE AVAILABLE FOR LEASE



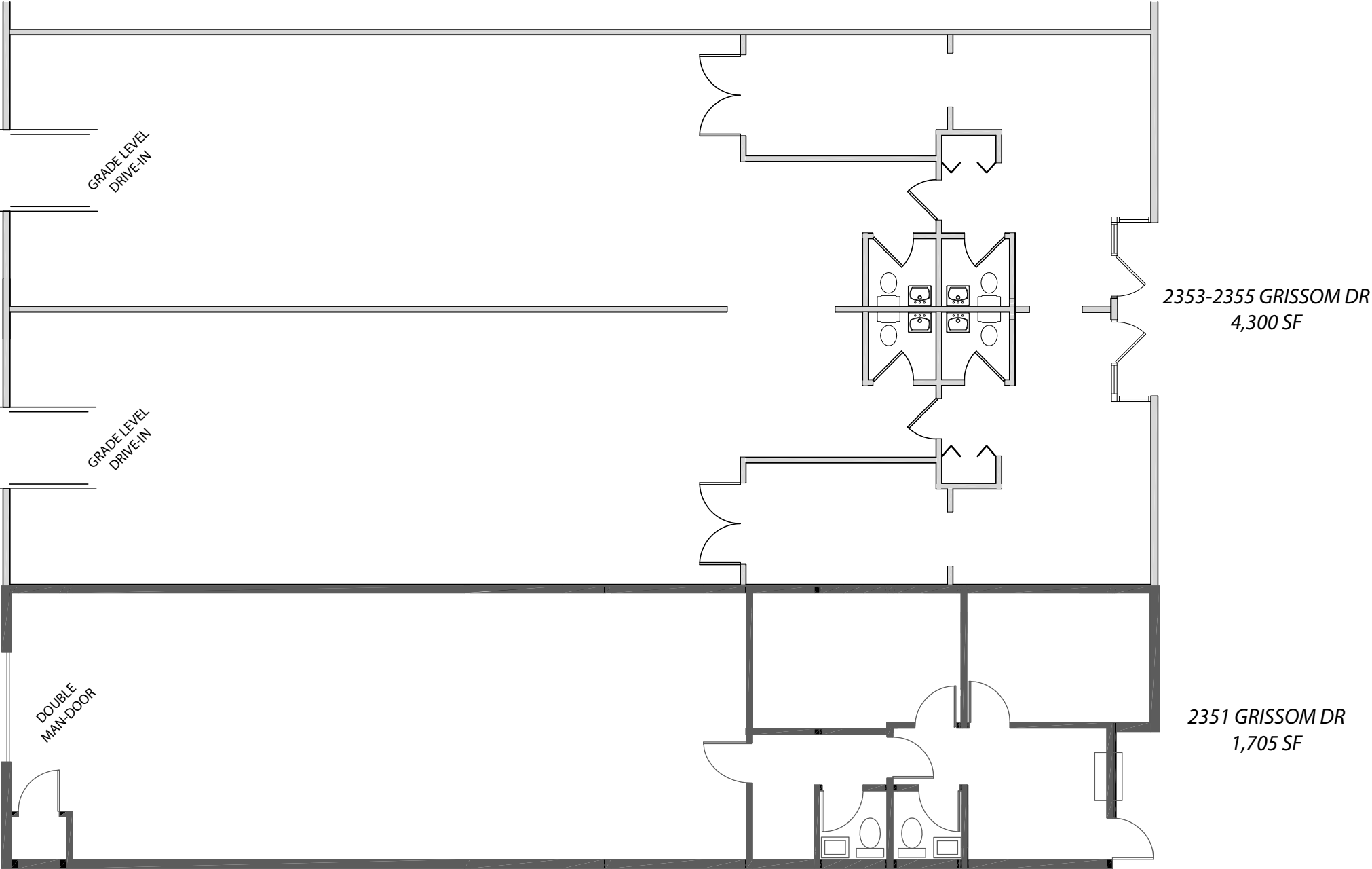
2347 GRISSOM DR  
2,150 SF

# Grissom Fee Fee

2345-2391 Grissom Drive

St. Louis, MO 63146

# 1,705 - 6,005 SF OFFICE / WAREHOUSE SPACE AVAILABLE FOR LEASE





# Grissom Fee Fee

2345-2391 Grissom Drive

St. Louis, MO 63146

## 1,705 - 6,005 SF OFFICE / WAREHOUSE SPACE AVAILABLE FOR LEASE

