



660 Mission Street

3RD FLOOR, SAN FRANCISCO, CA

FOR LEASE



ASKING \$70 IG, 3-5 years

EXCELLENT natural light, windows on two sides, 12 foot ceilings, exterior flag signage

GREAT ACCESS to public transit, Moscone Convention Center and Mid-Market

AVAILABLE immediately

PREDOMINANTLY open plan with one private glass office, large glass conference room, phone/storage room, kitchen and eating area

INTERNET infrastructure in place

MICHAEL TOBIN
415.229.8974
michael.tobin@kidder.com
LIC N° 00414723

KIDDER.COM

Kidder Mathews

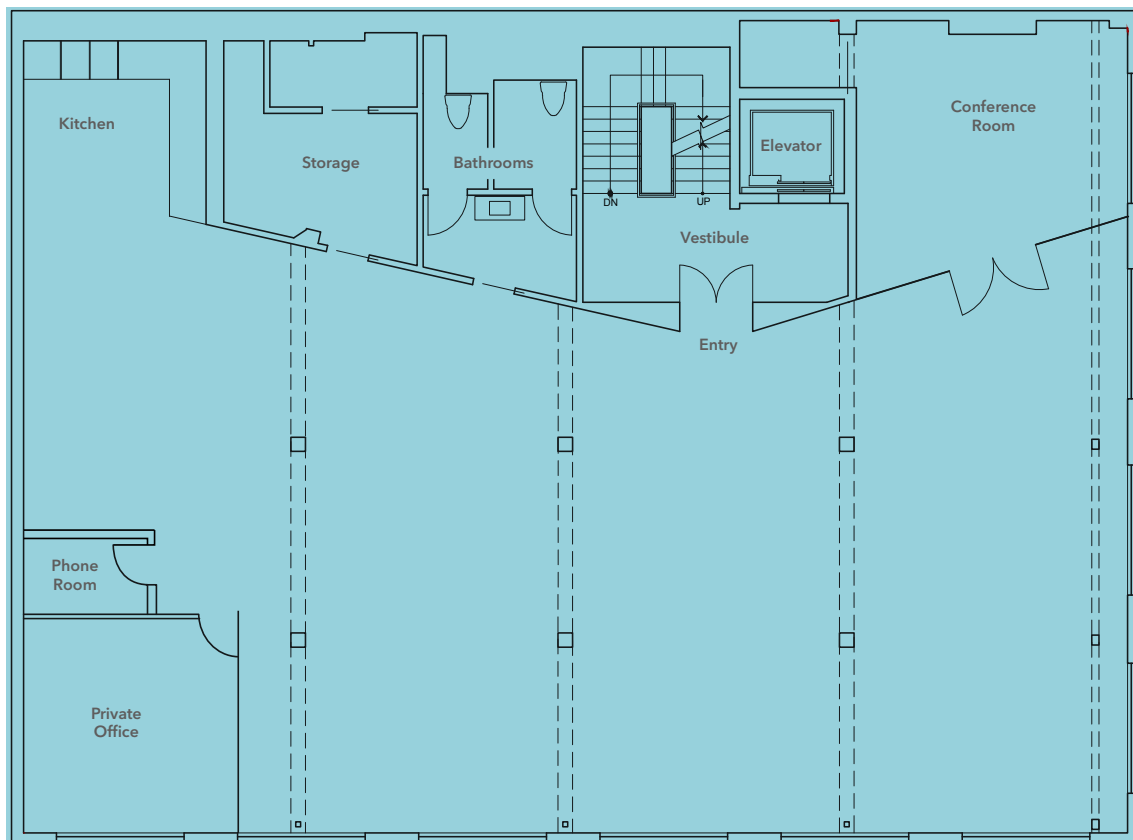
This information supplied herein is from sources we deem reliable. It is provided without any representation, warranty, or guarantee, expressed or implied as to its accuracy. Prospective Buyer or Tenant should conduct an independent investigation and verification of all matters deemed to be material, including, but not limited to, statements of income and expenses. Consult your attorney, accountant, or other professional advisor.

FOR LEASE

660 Mission Street

3RD FLOOR, SAN FRANCISCO, CA

3rd Floor: ±4,786 RSF of Design/Tech Office Space



MICHAEL TOBIN

415.229.8974

michael.tobin@kidder.com

LIC N° 00414723

KIDDER.COM

This information supplied herein is from sources we deem reliable. It is provided without any representation, warranty, or guarantee, expressed or implied as to its accuracy. Prospective Buyer or Tenant should conduct an independent investigation and verification of all matters deemed to be material, including, but not limited to, statements of income and expenses. Consult your attorney, accountant, or other professional advisor.



FOR LEASE

660 Mission Street

3RD FLOOR, SAN FRANCISCO, CA



MICHAEL TOBIN

415.229.8974

michael.tobin@kidder.com

LIC N° 00414723

KIDDER.COM

This information supplied herein is from sources we deem reliable. It is provided without any representation, warranty, or guarantee, expressed or implied as to its accuracy. Prospective Buyer or Tenant should conduct an independent investigation and verification of all matters deemed to be material, including, but not limited to, statements of income and expenses. Consult your attorney, accountant, or other professional advisor.

km Kidder
Mathews