

135 Acre Farm

9012 Geisbert Road | Woodsboro | MD | 21798

VCRE.CO



135 acre farmland with several improvements, captivating panoramic views capturing the open pasture, the flowing stream and beautiful views of the mountains. Offered at \$1,500,000.



Office: 240.367.9600 | Fax: 240.668.6822 | 1845 Brookfield Ct. | Frederick, MD 21701

Tony "C" Checchia

301.471.8669 (Tony) mobile

TonyC@vcre.co

240.367.9600

135 Acre Farm

9012 Geisbert Road | Woodsboro | MD | 21798

VCRE.CO

135 Acre Farm

Several improvements on this beautiful 135 acre lot

- ◆ 4 Bedroom Farmhouse
- ◆ Barn\Shed(s)/Out Buildings
- ◆ Large Detached Garage
- ◆ Zoned Agricultural
- ◆ Offered at \$1,500,000

Two additional lots available for sale ~ 109 acres (\$872,000)

92 acres (\$1,500,000)~ Purchase all 3 for \$3,600,000.



135 Acre Farm

9012 Geisbert Road | Woodsboro | MD | 21798

VCRE.CO

Zoning



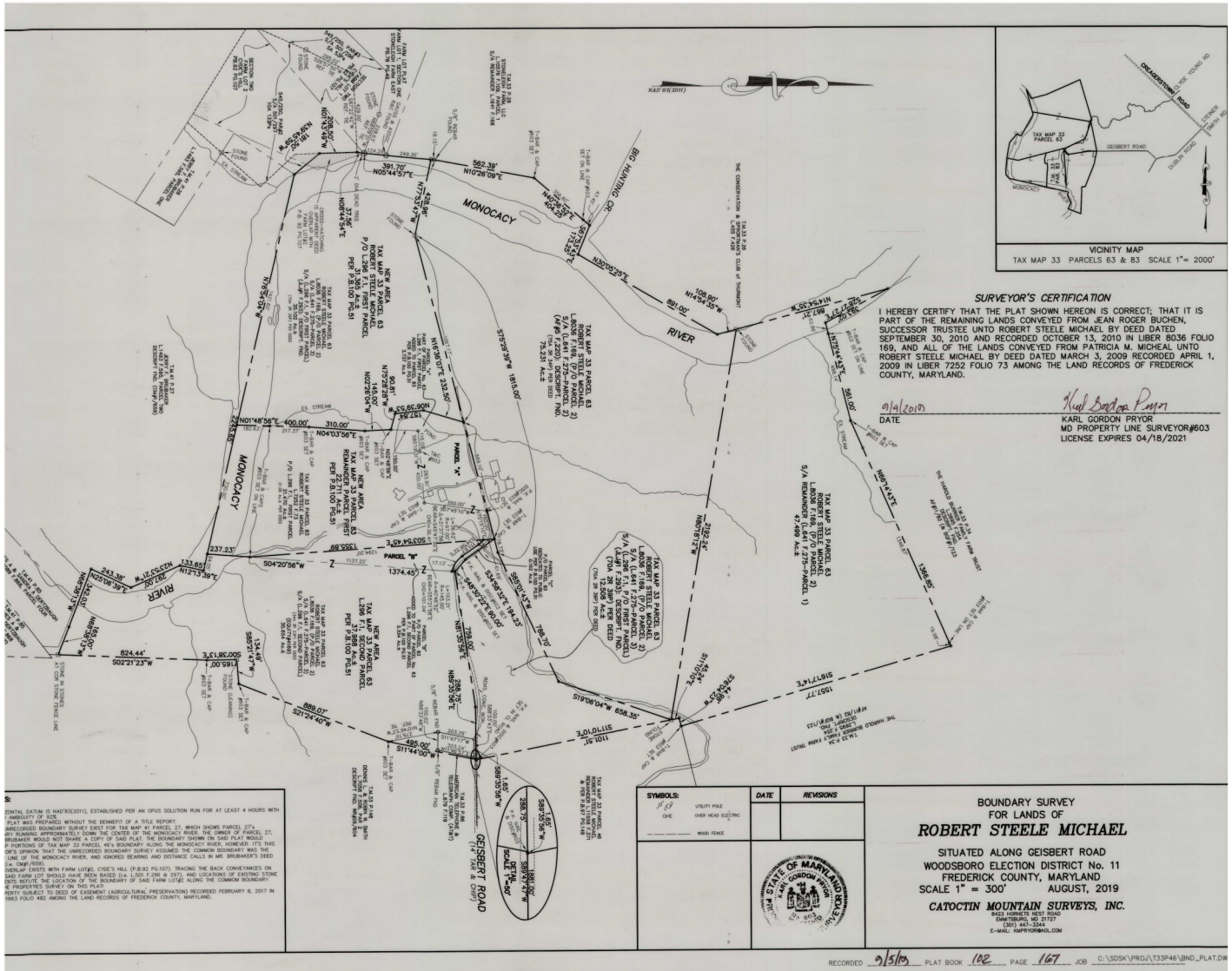
Disclaimer: Information obtained from sources deemed to be reliable. However, we make no guarantee, warranty or representation. Information, prices, and other data may change without notice.

135 Acre Farmland

9012 Geisbert Road | Woodsboro | MD | 21798

VCRE.CO

PLAT



Disclaimer: Information obtained from sources deemed to be reliable. However, we make no guarantee, warranty or representation. Information, prices, and other data may change without notice.



1845 Brookfield Court
Frederick, MD 21701

Office 240.367.9600
Cell 301.471.TONY (8669)

vcre.co



135 Acre Farmland

9012 Geisbert Road | Woodsboro | MD | 21798

VCRE.CO

PARCEL AERIEL



Disclaimer: Information obtained from sources deemed to be reliable. However, we make no guarantee, warranty or representation. Information, prices, and other data may change without notice.