

OFFICE SPACE FOR LEASE
4,672 SF AVAILABLE

PROPERTY FEATURES

- Four-building, well-landscaped, 330,000 SF Class A office park
- Located on Hurstbourne Parkway just north of Shelbyville Road
- Easy access to I-64 and I-264
- Space currently available on first floor of Forum II



FORUM OFFICE PARK

For more information, please contact:

BRENT BOLAND, CCIM
Senior Director
502 384 4494 ext. 134
brent.boland@cushwake.com

333 E. Main Street, Suite 510
Louisville, KY 40202
phone: +1 502 589 5150
www.CommercialKentucky.com

FOR LEASE

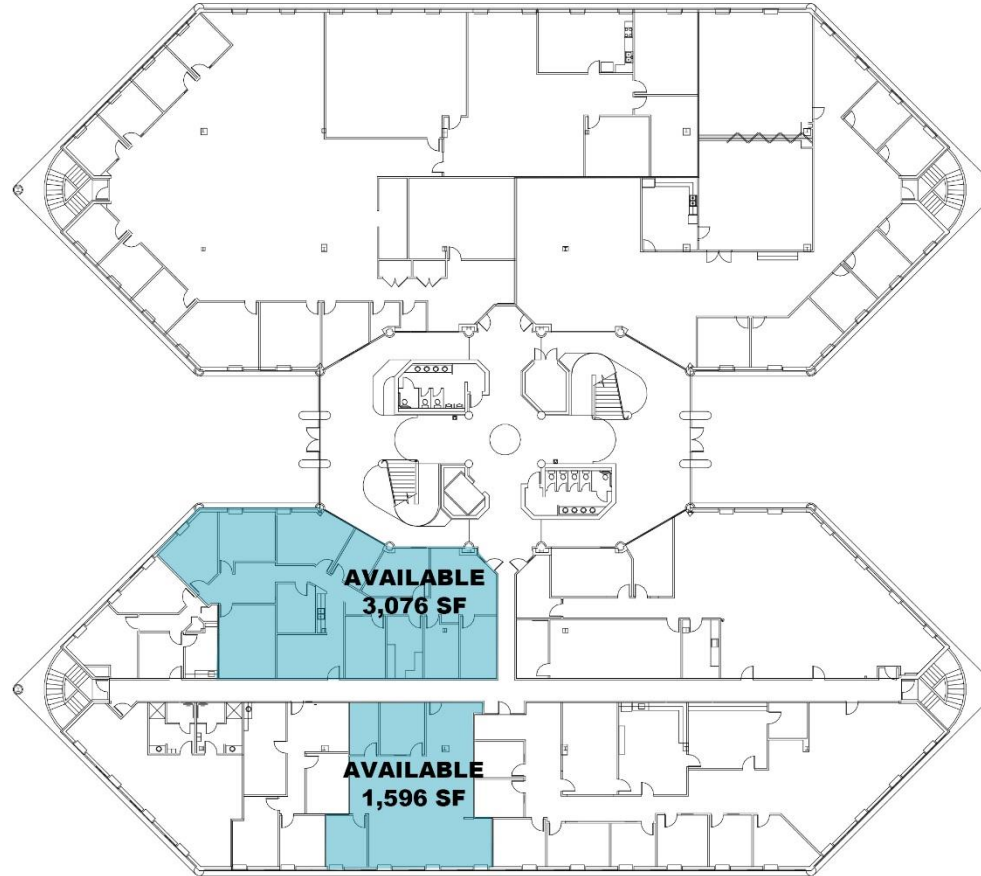
301, 303, 305 & 307 N. HURSTBOURNE PKWY
Louisville, KY 40222



For more information, please contact:

BRENT BOLAND, CCIM
Senior Director
502 384 4494 ext. 134
brent.boland@cushwake.com

333 E. Main Street, Suite 510
Louisville, KY 40202
phone: +1 502 589 5150
www.CommercialKentucky.com



FORUM II – First Floor

For more information, please contact:

BRENT BOLAND, CCIM
Senior Director
502 384 4494 ext. 134
brent.boland@cushwake.com

333 E. Main Street, Suite 510
Louisville, KY 40202
phone: +1 502 589 5150
www.CommercialKentucky.com