



***Voit***  
REAL ESTATE SERVICES

**6042-6048** COURT  
**CORNERSTONE**  
SAN DIEGO, CA

±2,733 SF LAB/OFFICE SPACE AVAILABLE FOR LEASE AT FOUNTAIN PLAZA

**GARRETT FENA**

858.458.3318 | [gfena@voitco.com](mailto:gfena@voitco.com) | Lic. #01909122

**TODD HOLLEY, SIOR**

858.458.3349 | [tholley@voitco.com](mailto:tholley@voitco.com) | Lic. #01046508

**JENNIFER YONCHUK**

858.458.3306 | [jyonchuk@voitco.com](mailto:jyonchuk@voitco.com) | Lic. #02031383

# FOUNTAIN PLAZA | SORRENTO VALLEY

Voit Real Estate Services is pleased to present office / lab space for lease located in **FOUNTAIN PLAZA** at 6044-6048 Cornerstone Court West, San Diego, CA 92121. Available for lease in Sorrento Mesa located along the south side of Mira Mesa Boulevard in the heart of San Diego's prestigious research and high-tech and Lab submarket. Locate your business in the heart of Technology Central.

**TENANT IMPROVEMENTS \$\$**  
**AVAILABLE**



**FOR LEASE AT FOUNTAIN PLAZA**

# 6042-6048 COURT CORNERSTONE

SAN DIEGO, CA

## PROJECT SUMMARY

### AVAILABILITY

Office / Lab Space: ±2,733 SF

### LEASE RATE

\$1.25 NNN

### LOCATION

Fountain Plaza is located in the heart of Sorrento Mesa, directly off Mira Mesa Boulevard and Pacific Heights Boulevard

### FEATURES

- Nice brick exterior; Window-lined office / lab space
- Private offices and conference room
- Free parking / Building signage
- Located near UCSD, Torrey Pines & other amenities
- Contact broker to view availability

**GARRETT FENA**  
gfena@voitco.com  
Lic. #01909122  
858.458.3318

**TODD HOLLEY, SIOR**  
tholley@voitco.com  
Lic. #01046508  
858.458.3349

**JENNIFER YONCHUK**  
jyonchuk@voitco.com  
Lic. #02031383  
858.458.3306

Licensed as Real Estate Salespersons by the CA Bur of Real Estate. The information contained herein has been obtained from sources we deem reliable. While we have no reason to doubt its accuracy, we do not guarantee it. ©2018 Voit Real Estate Services, Inc. All Rights Reserved.



## FLOOR PLAN

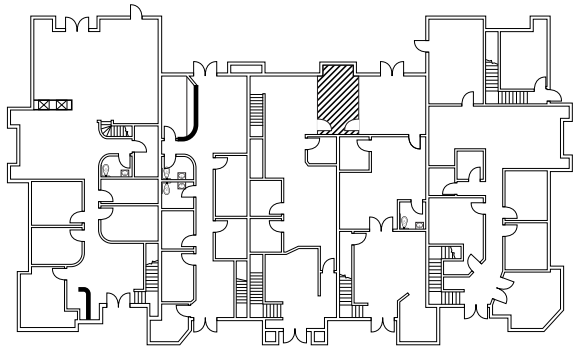
BUILDING 6048

Suite E2

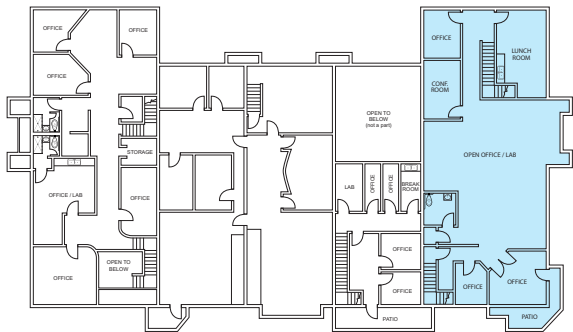
±2,733 SF

\$1.25 NNN

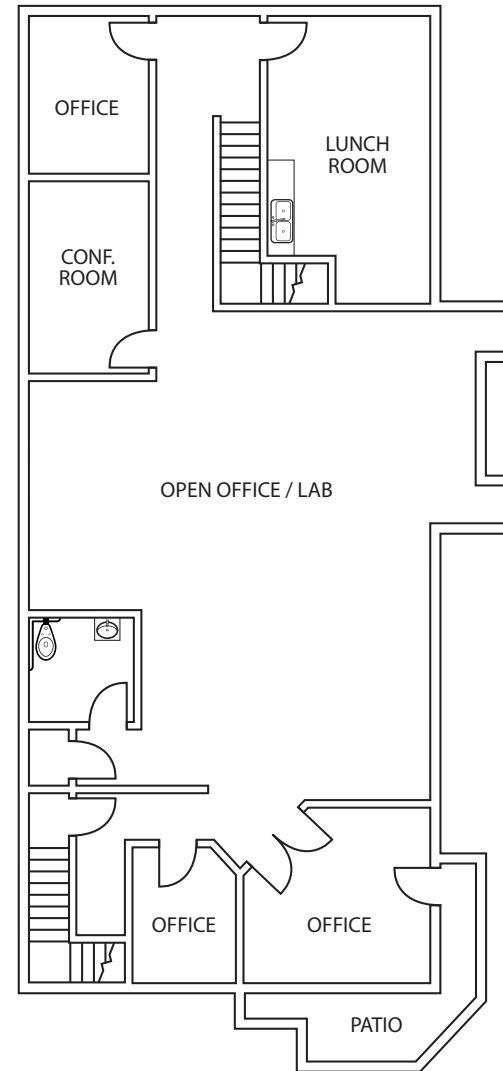
Open Area / Lab, Offices, Lunch Room,  
Conference Room, & Patio



FIRST FLOOR



SECOND FLOOR



SECOND FLOOR

6048\_#E2



**GARRETT FENA**

Vice President  
Lic. #01909122  
gfena@voitco.com  
858.458.3318

**TODD HOLLEY, SIOR**

Senior Vice President  
Lic. #01046508  
tholley@voitco.com  
858.458.3349

**JENNIFER YONCHUK**

Senior Client Coordinator  
Lic. #02031383  
jyonchuk@voitco.com  
858.458.3306

**Voit**

REAL ESTATE SERVICES

4180 La Jolla Village Drive, Suite 100, La Jolla, CA 92037 • 858.453.0505 • 858.408.3976 Fax • Lic #01991785 • www.voitco.com

Licensed as a Real Estate Salespersons by the CA Bur of Real Estate. The information contained herein has been obtained from sources we deem reliable. While we have no reason to doubt its accuracy, we do not guarantee it. ©2018 Voit Real Estate Services, Inc. All Rights Reserved. Real People. Real Solutions.® is a registered trademark of Voit Real Estate Services.