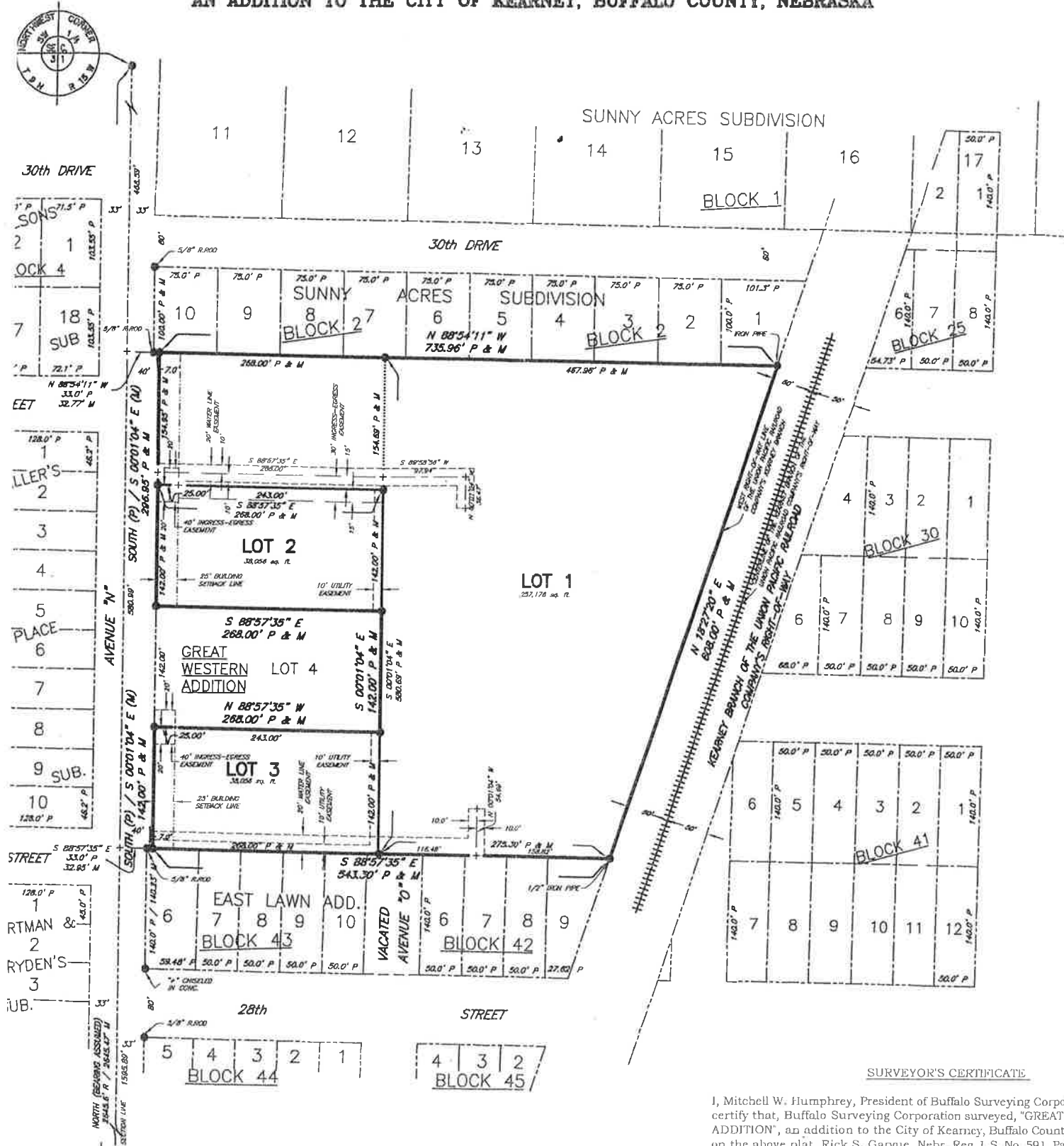


GREAT WESTERN SECOND ADDITION

AN ADDITION TO THE CITY OF KEARNEY, BUFFALO COUNTY, NEBRASKA



SURVEYOR'S CERTIFICATE

I, Mitchell W. Humphrey, President of Buffalo Surveying Corporation certify that, Buffalo Surveying Corporation surveyed, "GREAT WESTERN SECOND ADDITION", an addition to the City of Kearney, Buffalo County on the above plat, Rick S. Garvue, Nebr. Reg. L.S. No. 591, Part are well and accurately staked off and marked, the dimensions shown on the above plat, the lots bear their own number, and they were made with reference to known and recorded monuments.

(S E A L)

BUFFALO SURVEYING

Mitchell W. Humphrey,
Nebr. Registered Land