

527 MADISON

PLAZA DISTRICT

DIRECT LISTING

 MITSUI FUDOSAN AMERICA

Entire 25th Floor
6,500 RSF

Partial 12th Floor
4,484 RSF

Entire 11th Floor
8,600 RSF

Entire 8th Floor
11,500 RSF



WiredScore
PLATINUM

 CUSHMAN &
WAKEFIELD

527 MADISON

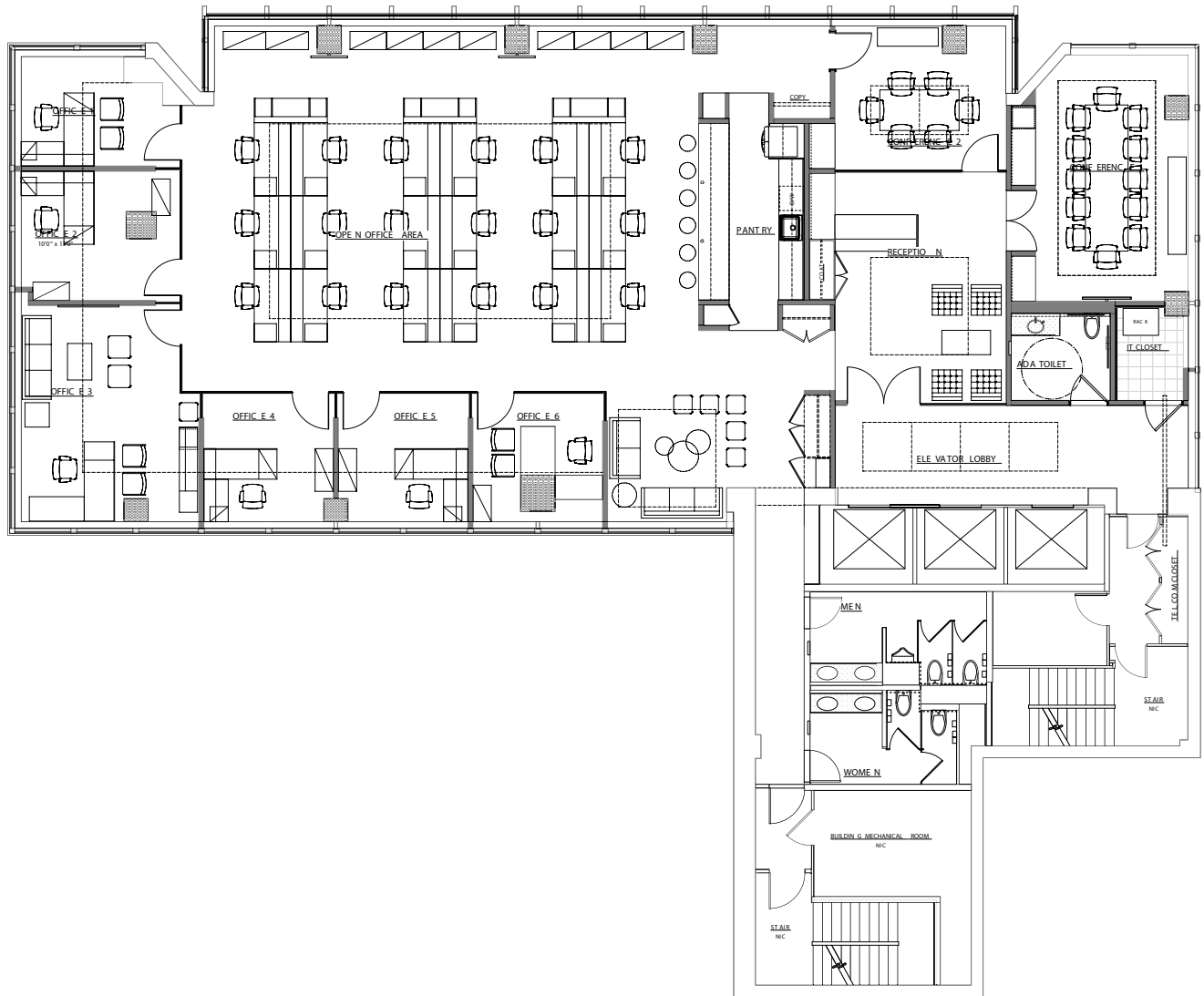
PLAZA DISTRICT

Entire 25th Floor | 6,500 RSF

EXISTING HIGH-END INSTALLATION BUILT WITH 6 OFFICES | AVAILABLE 7/2022
2 CONFERENCE ROOMS

EAST 54 STREET

MADISON AVENUE



GORDON HOUGH
212 895 8927
gordon.l.hough@cushwake.com

MARK BOISI
212 318 9707
mark.boisi@cushwake.com

CUSHMAN & WAKEFIELD
1290 Avenue of the Americas
New York, NY 10104
cushmanwakefield.com

527 MADISON

PLAZA DISTRICT

Entire 25th Floor Space Photos

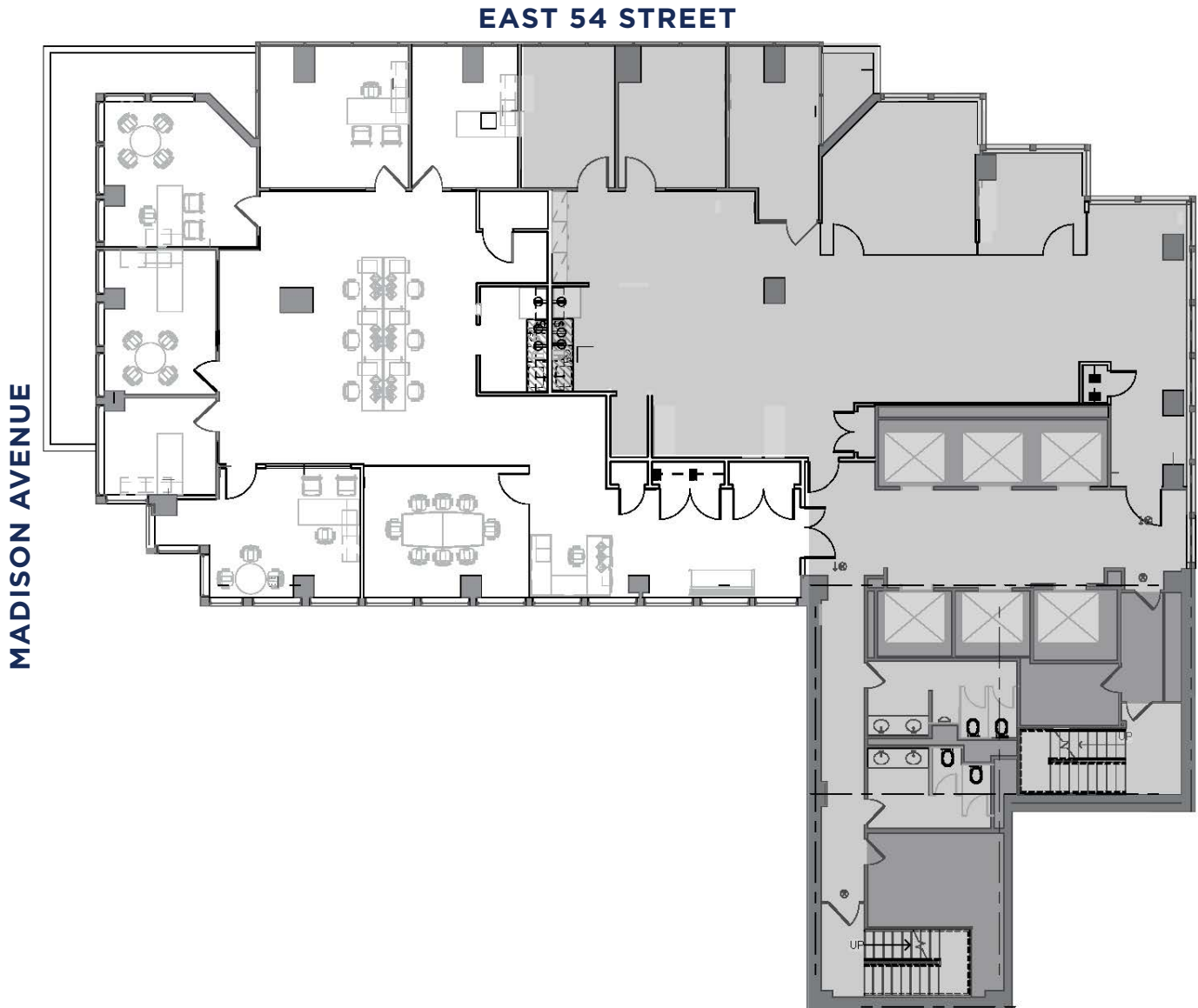


527 MADISON

PLAZA DISTRICT

Partial 12th Floor | 4,484 RSF

PREBUILT OPPORTUNITY | AVAILABLE 3/2022



GORDON HOUGH
212 895 8927
gordon.l.hough@cushwake.com

MARK BOISI
212 318 9707
mark.boisi@cushwake.com

CUSHMAN & WAKEFIELD
1290 Avenue of the Americas
New York, NY 10104
cushmanwakefield.com

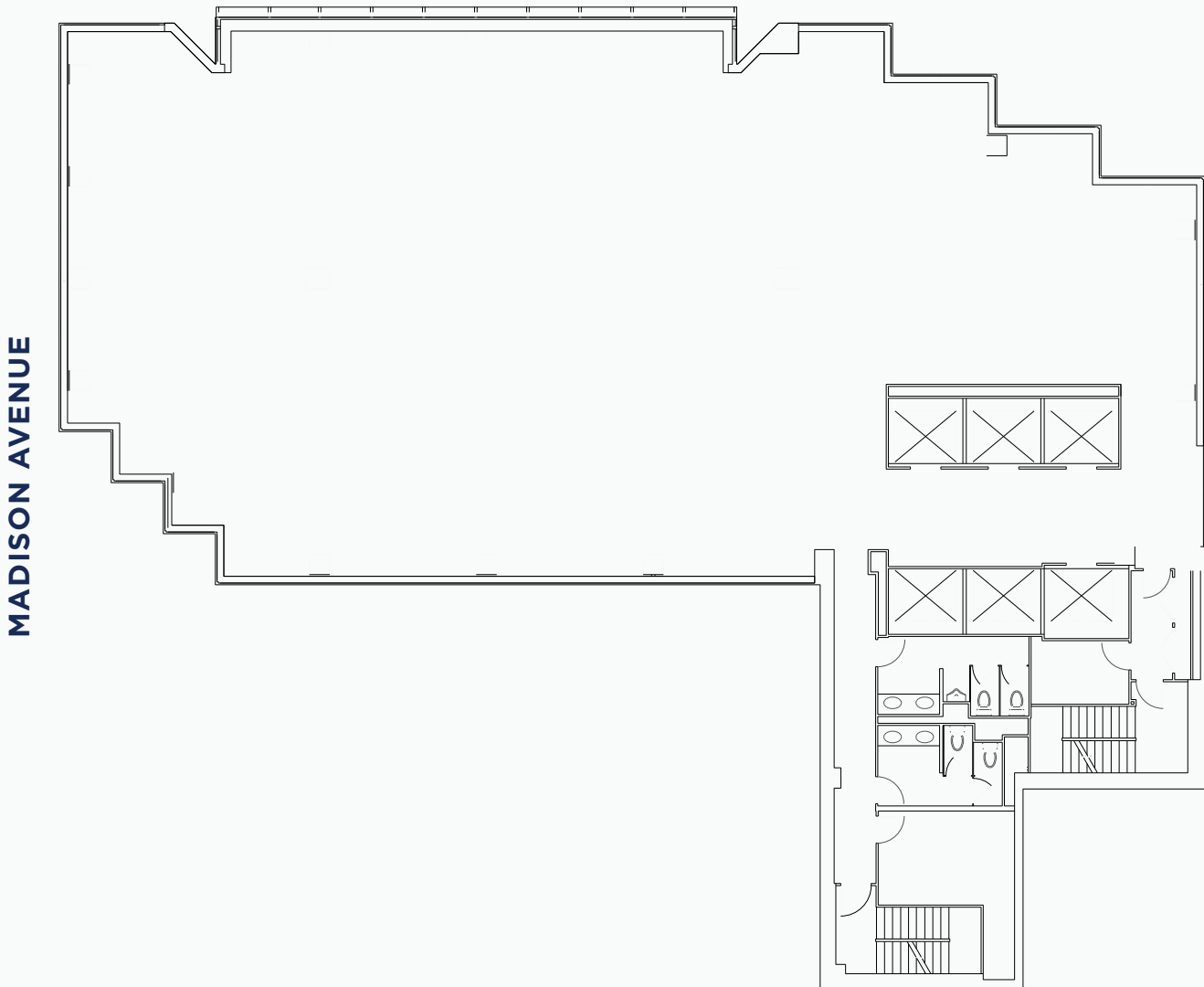
527 MADISON

PLAZA DISTRICT

Entire 11th Floor | 8,600 RSF

BUILD-TO-SUIT TURNKEY OPPORTUNITY | AVAILABLE 6/2022

EAST 54 STREET



GORDON HOUGH
212 895 8927
gordon.l.hough@cushwake.com

MARK BOISI
212 318 9707
mark.boisi@cushwake.com

CUSHMAN & WAKEFIELD
1290 Avenue of the Americas
New York, NY 10104
cushmanwakefield.com

©2021 Cushman & Wakefield. All rights reserved. The information contained in this communication is strictly confidential. This information has been obtained from sources believed to be reliable but has not been verified. No warranty or representation, express or implied, is made as to the condition of the property (or properties) referenced herein or as to the accuracy or completeness of the information contained herein, and same is submitted subject to errors, omissions, change of price, rental or other conditions, withdrawal without notice, and to any special listing conditions imposed by the property owner(s). Any projections, opinions or estimates are subject to uncertainty and do not signify current or future property performance.

527 MADISON

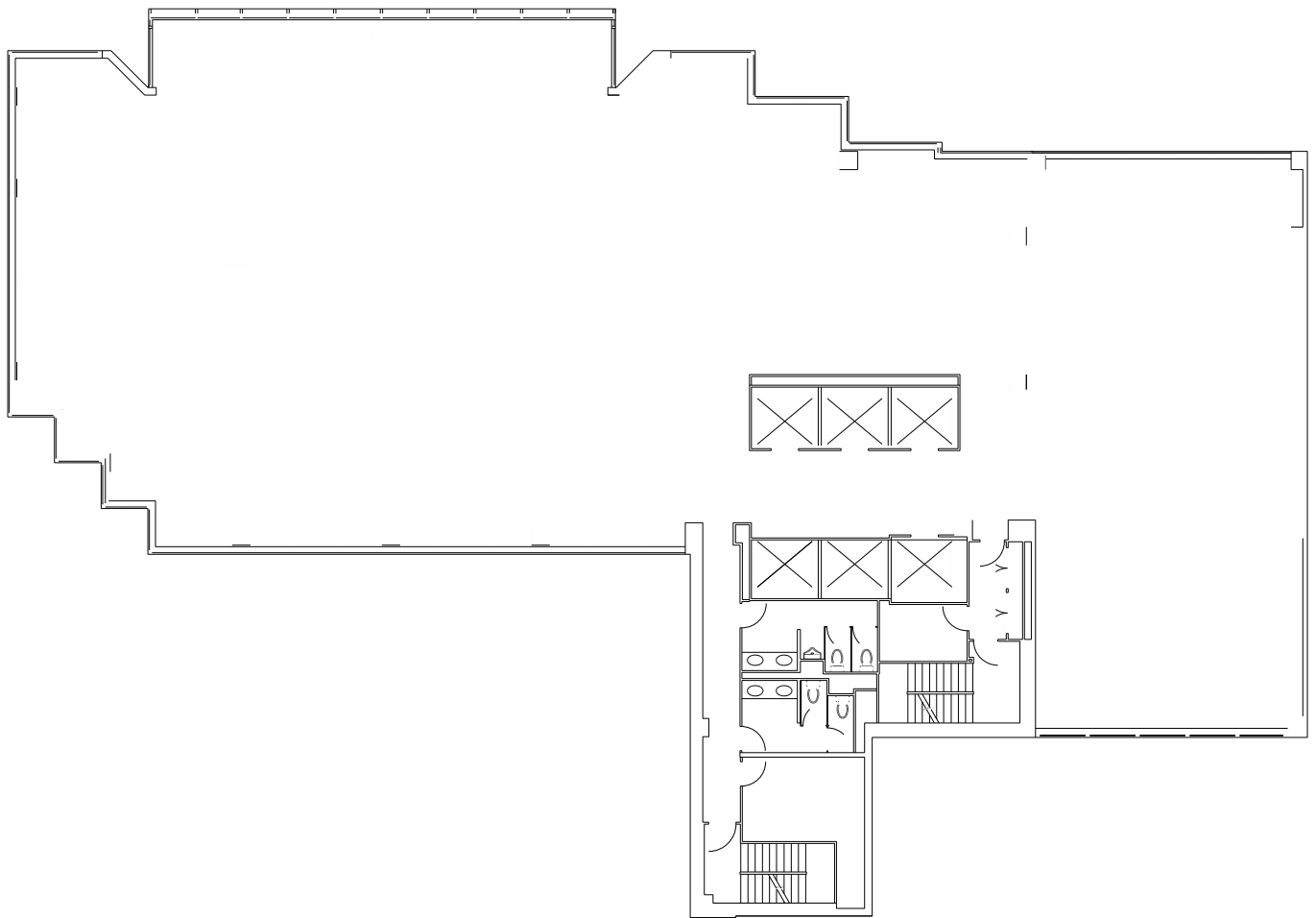
PLAZA DISTRICT

Entire 8th Floor | 11,500 RSF

BUILD-TO-SUIT TURNKEY OPPORTUNITY | AVAILABLE 3/2022

EAST 54 STREET

MADISON AVENUE



GORDON HOUGH
212 895 8927
gordon.l.hough@cushwake.com

MARK BOISI
212 318 9707
mark.boisi@cushwake.com

CUSHMAN & WAKEFIELD
1290 Avenue of the Americas
New York, NY 10104
cushmanwakefield.com

©2021 Cushman & Wakefield. All rights reserved. The information contained in this communication is strictly confidential. This information has been obtained from sources believed to be reliable but has not been verified. No warranty or representation, express or implied, is made as to the condition of the property (or properties) referenced herein or as to the accuracy or completeness of the information contained herein, and same is submitted subject to errors, omissions, change of price, rental or other conditions, withdrawal without notice, and to any special listing conditions imposed by the property owner(s). Any projections, opinions or estimates are subject to uncertainty and do not signify current or future property performance.

527 MADISON

PLAZA DISTRICT

NBI Renderings



527 MADISON

PLAZA DISTRICT

NBI Renderings





ASKING RENT: UPON REQUEST



TERM: NEGOTIABLE



SPACE FEATURES

- Entire 25th floor - 6,500 SF: (available 7/2022) existing high-end installation built with 6 offices, 2 conference rooms
- Partial 12th floor - 4,484 SF (available 3/2022) pre-built opportunity
- Entire 11th floor - 8,600 SF (available 6/2022) build-to-suit turnkey opportunity
- Entire 8th floor - 11,500 SF (available 3/2022) build-to-suit turnkey opportunity

BUILDING FEATURES

- Institutional Ownership
- Modernized Class A Building with new lobby, terrace amenity, parking on site and distinguished tenant roster
- Plaza District Location with Excellent Transportation Access (E/M, Grand Central)



 **MITSUI FUDOSAN**



WiredScore
PLATINUM

 **CUSHMAN & WAKEFIELD**

527 MADISON

PLAZA DISTRICT

Entire 25th Floor
6,500 RSF

Partial 12th Floor
4,484 RSF

Entire 11th Floor
8,600 RSF

Entire 8th Floor
11,500 RSF



CUSHMAN & WAKEFIELD
1290 Avenue of the Americas
New York, NY 10104
cushmanwakefield.com

GORDON HOUGH
212 895 8927
gordon.l.hough@cushwake.com

MARK BOISI
212 318 9707
mark.boisi@cushwake.com