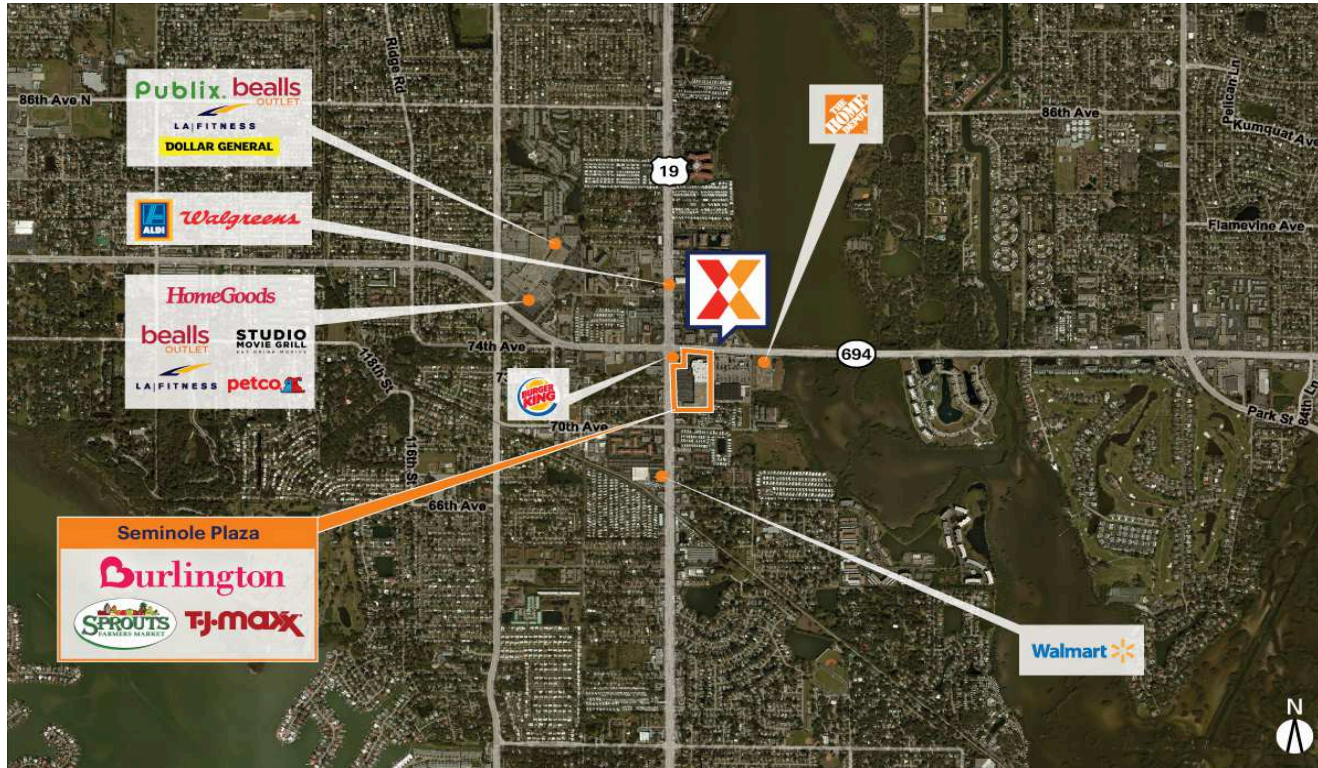


Seminole Plaza

Orlando-Kissimmee-Sanford, FL

27.8377, -82.7869

7191 Seminole Boulevard | Seminole, FL 32772



Center Size: 156,579 SF



| Demographics | 1 Mile | 3 Mile | 5 Mile |
|--------------|----------|----------|----------|
| | 12,316 | 82,642 | 209,513 |
| | 6,399 | 37,904 | 94,388 |
| | \$62,151 | \$75,527 | \$69,923 |

Dual-Anchored by Spouts and T.J. Maxx

Surrounded by a dense population of 82,000+ within a 3-mile radius

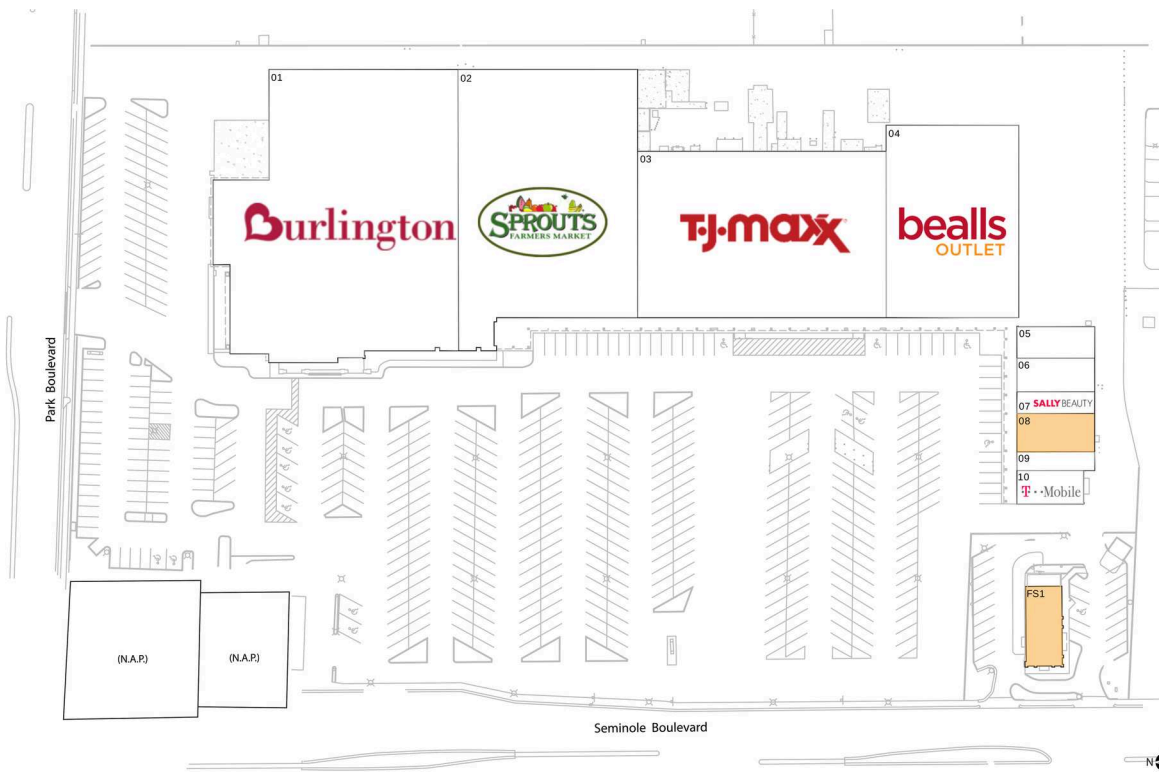
High visibility from 32,000+ vehicles daily on Seminole Blvd and 37,000+ on Park Blvd

Seminole Plaza

Orlando-Kissimmee-Sanford, FL

27.8377, -82.7869

7191 Seminole Boulevard | Seminole, FL 32772



Available Space

| | |
|-----|----------|
| FS1 | 2,709 SF |
| 08 | 2,450 SF |

Current Retailers

| | | |
|----|------------------------|-----------|
| 01 | Burlington Stores | 55,409 SF |
| 02 | Sprouts Farmers Market | 32,863 SF |
| 03 | T.J. Maxx | 34,050 SF |
| 04 | Bealls Outlet | 20,775 SF |
| 05 | Noire The Nail Bar | 1,990 SF |
| 06 | The Max Challenge | 2,140 SF |
| 07 | Sally Beauty Supply | 1,380 SF |
| 09 | Q Nails And Spa | 1,050 SF |
| 10 | T-Mobile | 1,750 SF |

1155