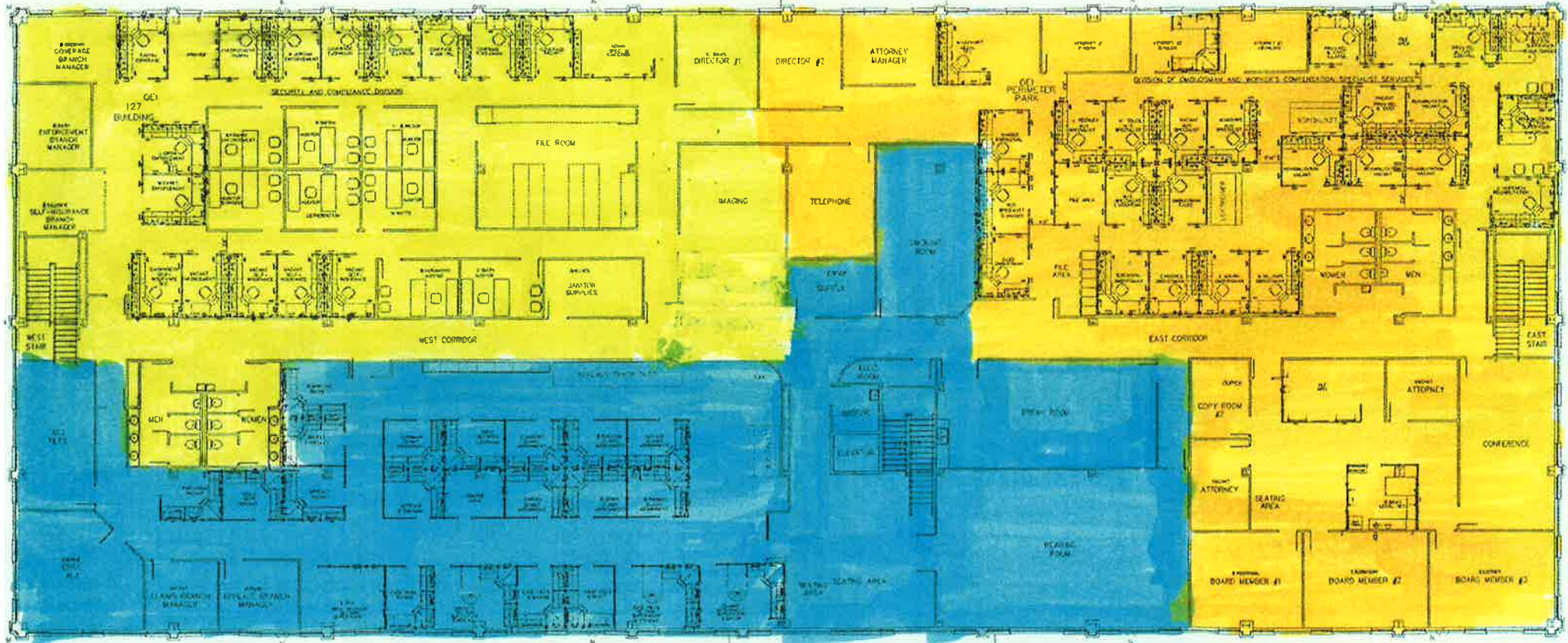


FIRE EVACUATION ROUTES

ALL AREAS SHADED "BLUE" ARE TO EVACUATE THE BUILDING VIA THE CENTRAL STAIRWAY AND PROCEED TO EXIT THE BUILDING, USING DOOR NUMBER 1

ALL AREAS SHADED "YELLOW" ARE TO EVACUATE THE BUILDING VIA THE WEST STAIRWAY AND PROCEED TO EXIT THE BUILDING, USING DOOR NUMBER 6

ALL AREAS SHADED "ORANGE" ARE TO EVACUATE THE BUILDING VIA THE EAST STAIRWAY AND PROCEED TO EXIT THE BUILDING, USING DOOR NUMBER 2



AFTER EXITING THE BUILDING, PLEASE PROCEED TO THE DESIGNATED SAFE ASSEMBLY AREA.

THE DESIGNATED SAFE ASSEMBLY AREAS ARE:

- FOR THE "BLUE" SHADED AREA - THE SIDEWALK ACROSS THE STREET FROM DOOR # 1**
- FOR THE "YELLOW" SHADED AREA - THE REAR SECTION OF WEST PARKING LOT**
- FOR THE "ORANGE" SHADED AREA - THE REAR SECTION OF EAST PARKING LOT**