

FOR SALE CONDO PROJECT

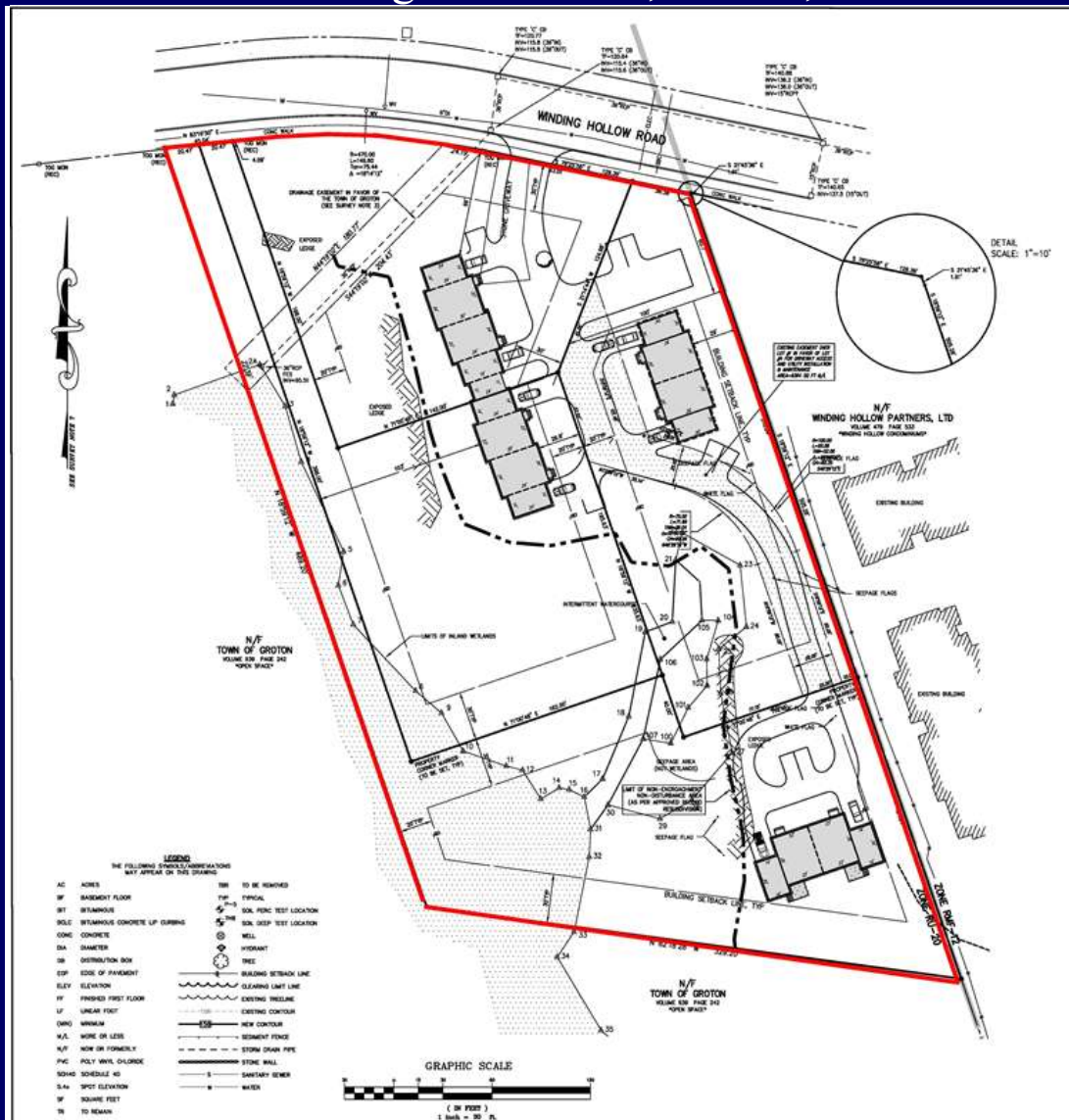
203—215 Winding Hollow Rd., Groton, CT 06340

FOR
SALE

\$376,000

Each Unit:
1,725sf

3BR, 2.5BA,
Open floor
plan with bar



Norm Peck

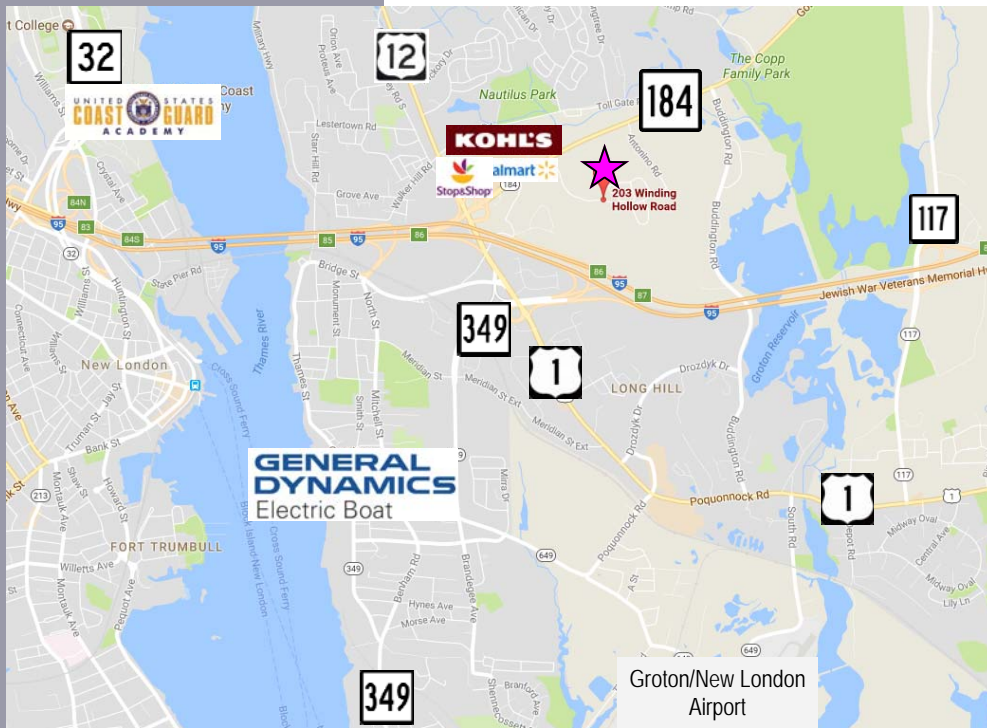
PEQUOT COMMERCIAL

15 Chesterfield Road, Suite 4
East Lyme, CT 06333

860-447-9570 x133
860-444-6661 Fax

npeck@pequotcommercial.com

- > Approved 8 Unit Condo project
- > 4 Lot subdivision
- > Four foundations in place as of Sept. 2017



<u>DEMOGRAPHICS</u>	<u>3 MILE</u>	<u>5 MILE</u>	<u>10 MILE</u>
Total Population	43,086	83,861	148,567
Total Households	16,282	33,628	60,098
Household Income: \$0—\$30,000	30.51%	25.63%	20.24%
\$30,001-\$60,000	25.13%	23.07%	22.53%
\$60,001-\$100,000	23.84%	23.22%	23.57%
\$100,001+	20.53%	28.08%	33.64%

