

# Retail/Office Space For Lease

**±918 Square Feet**

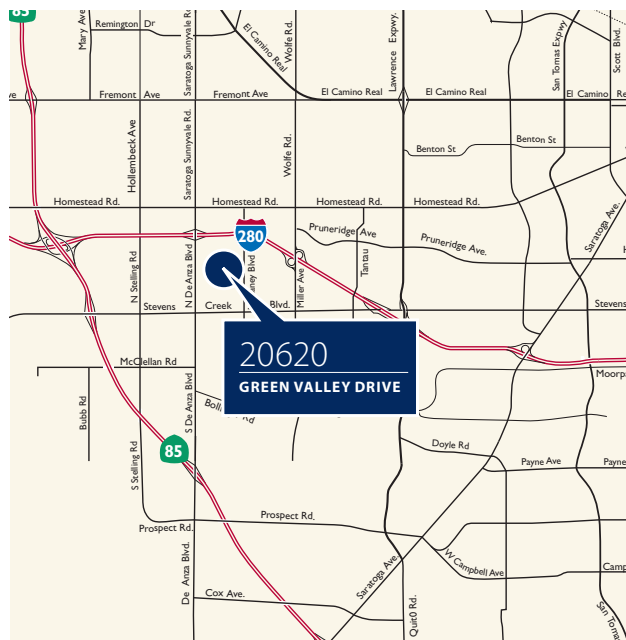


**20620** | **VALLEY GREEN DRIVE**  
CUPERTINO, CA

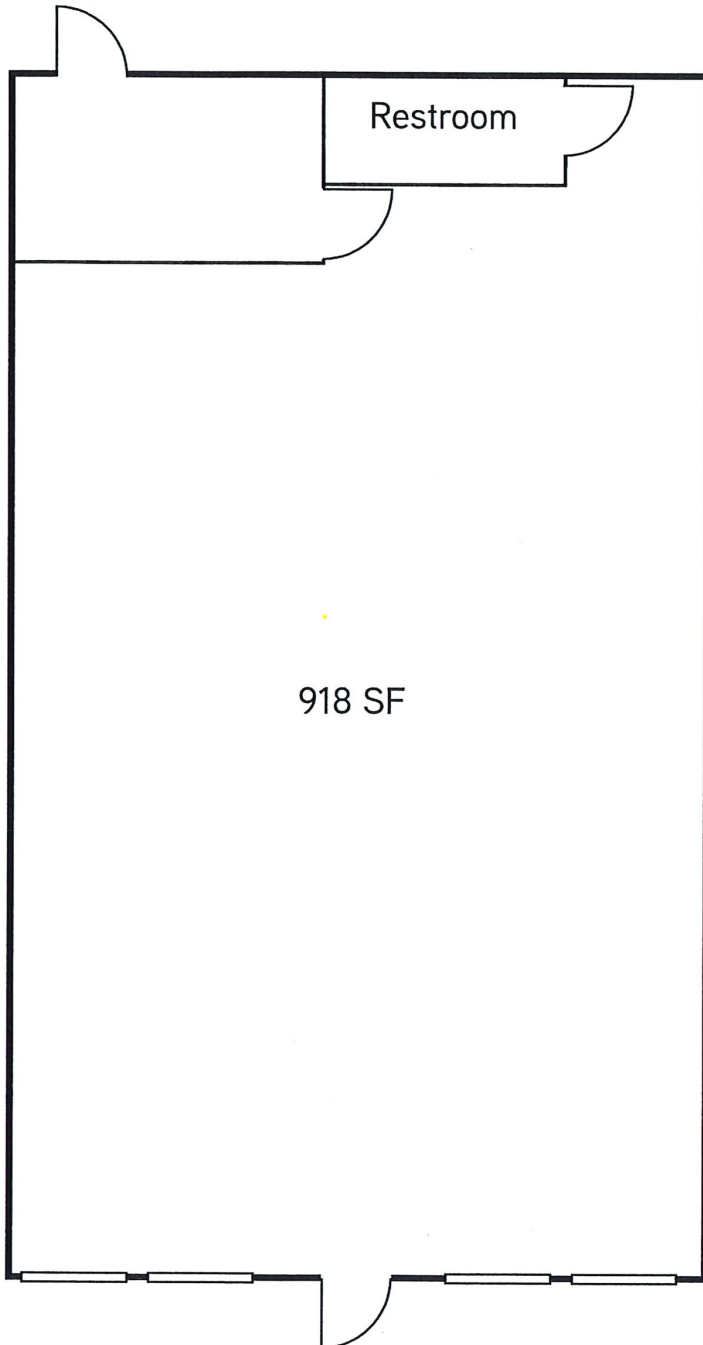
## Retail/Office for Lease

### Highlights

- ±918 Square Feet of Retail/Office Space Available
- Former Max Muscle Sports Nutrition
- Corner of De Anza Blvd. and Valley Green Drive
- Directly Across from Apple Headquarters
- Highly visible retail center
- Ample Parking and Signage
- Rate: \$2.95 NNN
- \$0.75 Expenses



# 20620 Valley Green Drive, Cupertino, CA



**BOB SHEPHERD**  
408.913.6933  
[bob.shepherd@avisonyoung.com](mailto:bob.shepherd@avisonyoung.com)  
CA License No. 00690284

**BEN DAMON**  
408.913.6940  
[ben.damon@avisonyoung.com](mailto:ben.damon@avisonyoung.com)  
CA License No. 02082980

**NICK BALDWIN**  
408.913.6914  
[nick.baldwin@avisonyoung.com](mailto:nick.baldwin@avisonyoung.com)  
CA License No. 01977249