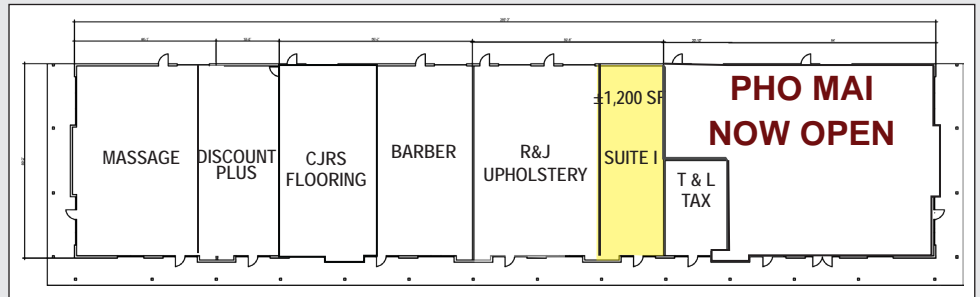


# FOR LEASE - ± 1,200 SF RETAIL SHOP SPACE

433 S. WATERMAN AVENUE - SAN BERNARDINO, CA 92408



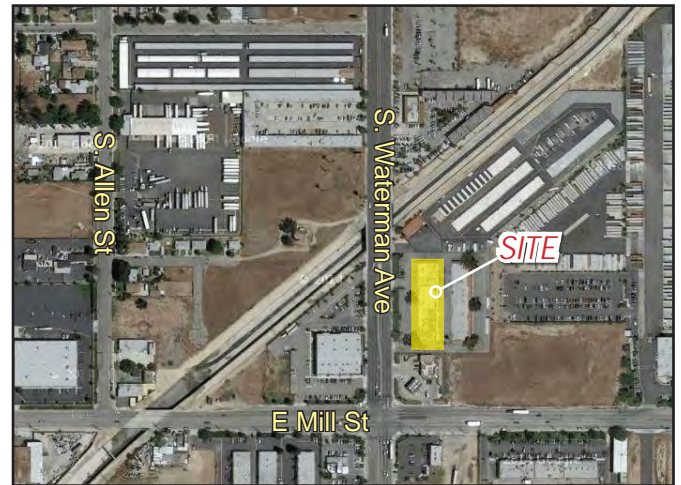
UNIT #	UNIT SF
I	±1,200



433 S. WATERMAN AVE, SAN BERNARDINO

## 2016 DEMOGRAPHICS

	1 mile	3 mile	5 mile
Average Household Income	\$29,090	\$38,908	\$50,033
Estimated Population	8,872	126,606	336,683
Projected Population (2021)	9,346	133,962	354,974
Median Age	28.6	27.9	29.7
Estimated Daytime Population	25,834	122,226	266,709



**LEE & ASSOCIATES**  
COMMERCIAL REAL ESTATE SERVICES

**JAY NICHOLS**  
951.276.3656  
jnichols@leeriverside.com  
LICENSE #011905191

**CHRIS BEAUCHAMP**  
951.276.3675  
cbeauchamp@lee-associates.com  
LICENSE #01982753

3240 Mission Inn Avenue | Riverside, CA 92507 | www.lee-associates.com | Corp ID # 01048055

No warranty or representation has been made to the accuracy of the foregoing information. Terms of sale or lease and availability are subject to change or withdrawal without notice. REV 11.08.16  
Lee & Associates Commercial Real Estate Services, Inc. - Riverside, 3240 Mission Inn Avenue - Riverside, CA 92507 | Corporate ID# 01048055