



**Suite 100\*: ± 2,063 RSF**

*(Available 11/01/2019)*

**Suite 110\*: ± 1,276 RSF**

*(Available 10/01/2019)*

*\* Can be combined for ±3,339 RSF*

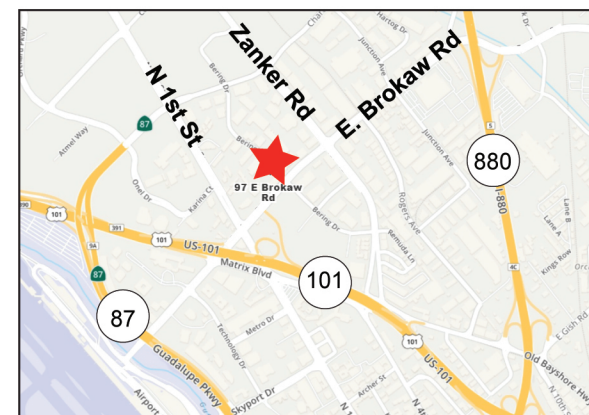
**Suite 240: ± 3,447 RSF**

*(Available in 30 Days)*

**- FULL COMMISSION -**

### Property Highlights:

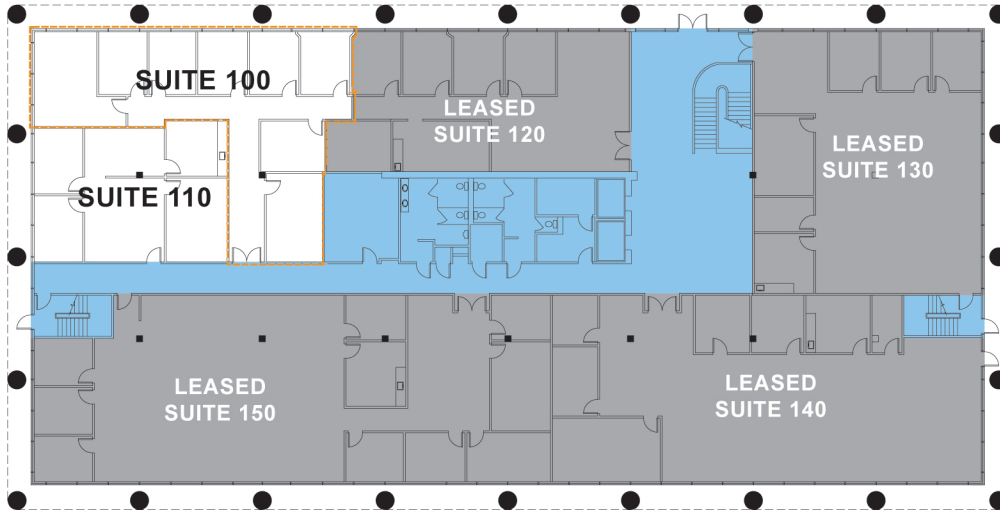
- Across from Google's Brand New 728,000 SF Campus
- 3- Story Office with Open Atrium Lobby
- Located within Silicon Valley's Golden Triangle
- Convenient location off HWY 101 & N. 1st Street
- Easy access to HWY 87, 880 and SJ Int'l Airport
- Mature Tree Line
- Outdoor Patio Seating
- Ample Parking (±4.1/1000)
- Asking \$3.10/SF Full Service



**DANNY YU**

408.718.3069 | LIC #01114851 | danny.yu@svcpb.com  
1330 RIDDER PARK DRIVE, SAN JOSE, CA 95131

## 1st FLOOR PLAN



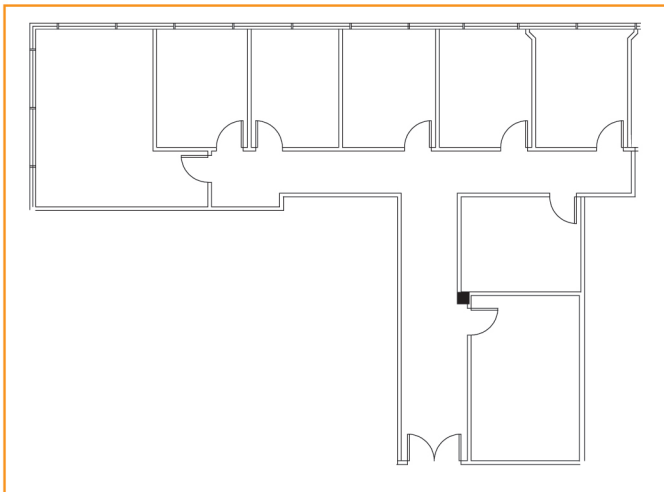
\* Floor Plan May Not Be Exact or To Scale.

AVAILABLE

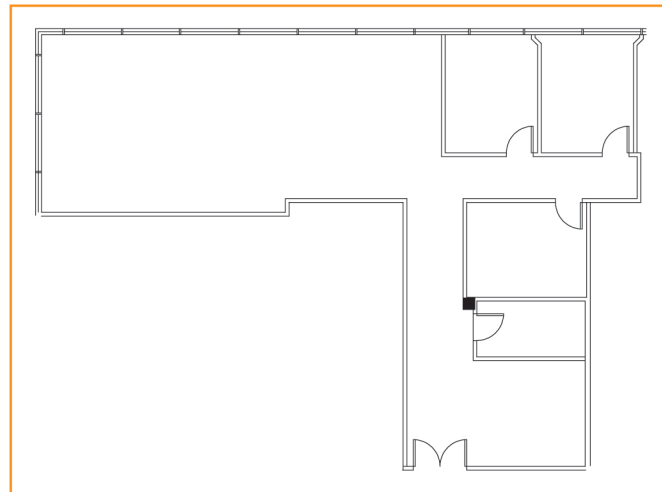
**SUITE 100 / ±2,063 RSF**



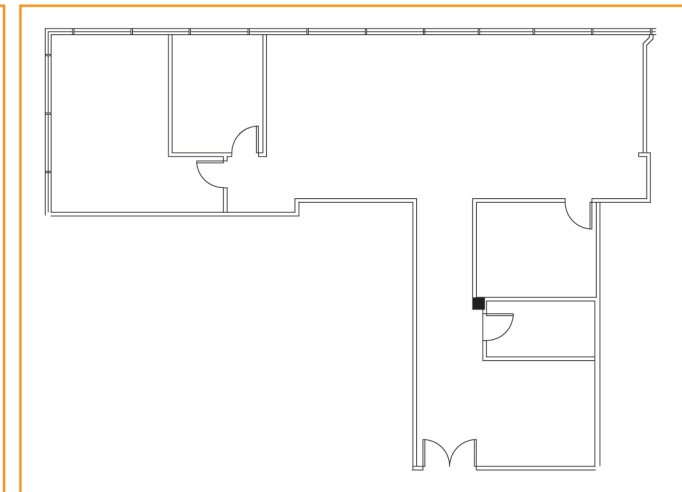
Existing Plan



Proposed Plan #1



Proposed Plan #2

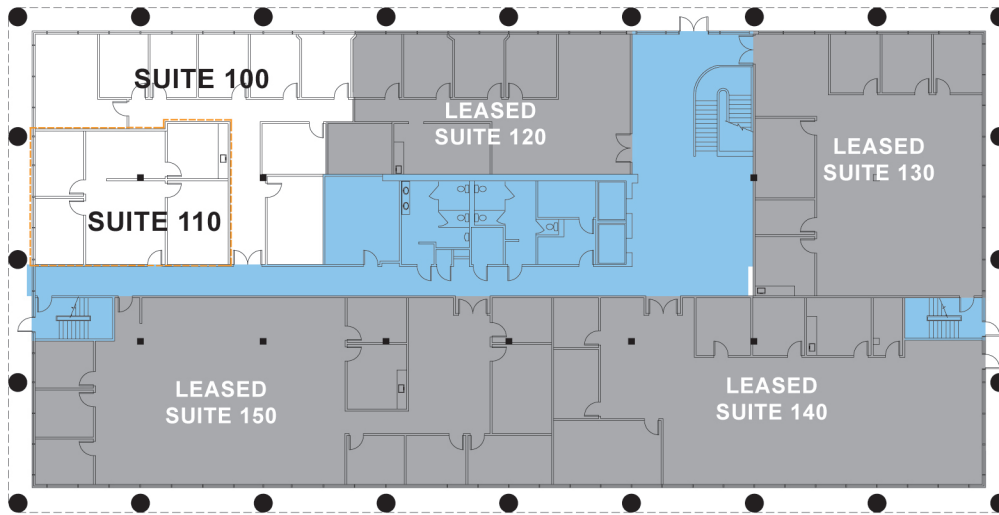


**DANNY YU**

408.718.3069 | LIC #01114851 | danny.yu@svcpb.com  
1330 RIDDER PARK DRIVE, SAN JOSE, CA 95131



## 1st FLOOR PLAN

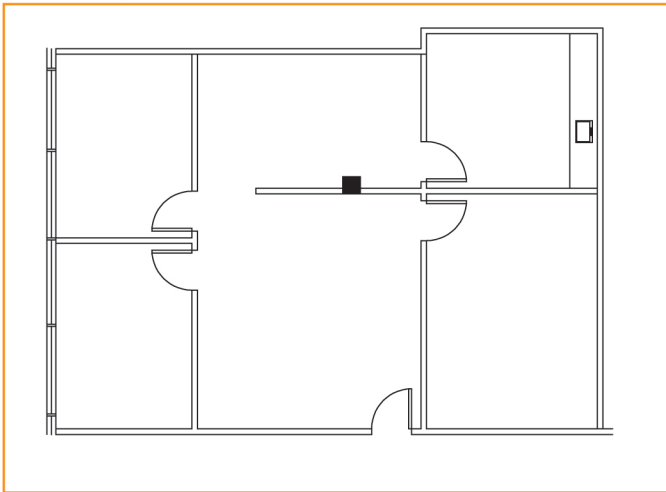


COMMON AREA

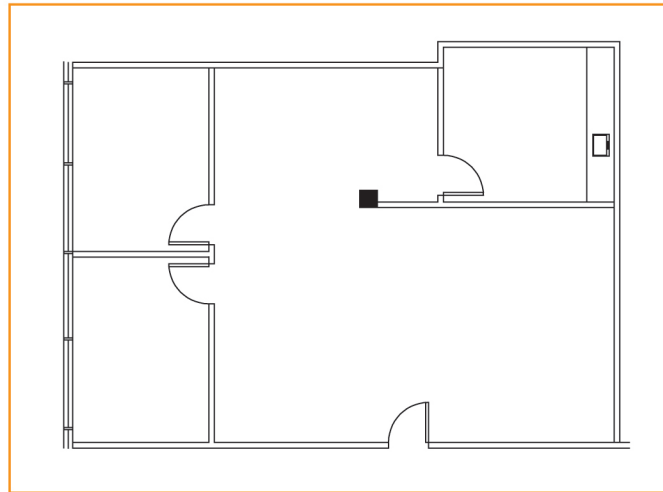
\* Floor Plan May Not Be Exact or To Scale.

AVAILABLE

**SUITE 110 / ±1,276 RSF**  
Existing Plan

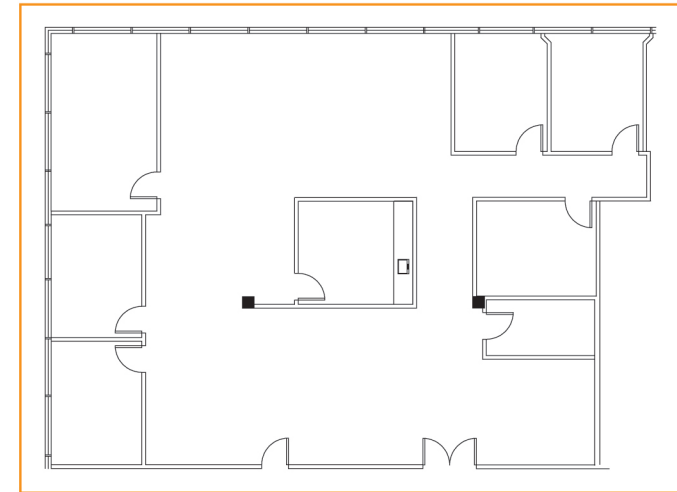


Proposed Plan



AVAILABLE

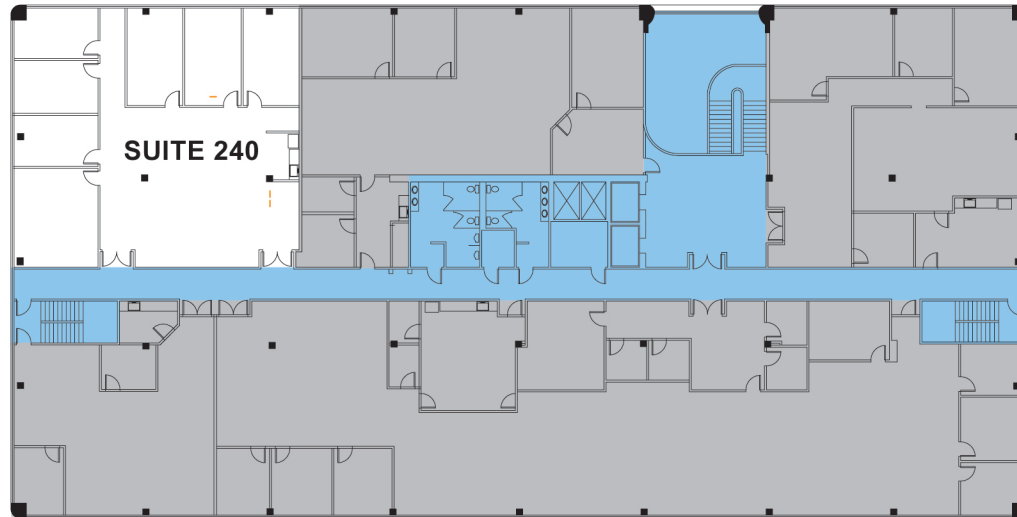
**Combined SUITE 100 + 110**  
Proposed Plan / ±3,339 RSF



**DANNY YU**

408.718.3069 | LIC #01114851 | danny.yu@svcpb.com  
1330 RIDDER PARK DRIVE, SAN JOSE, CA 95131

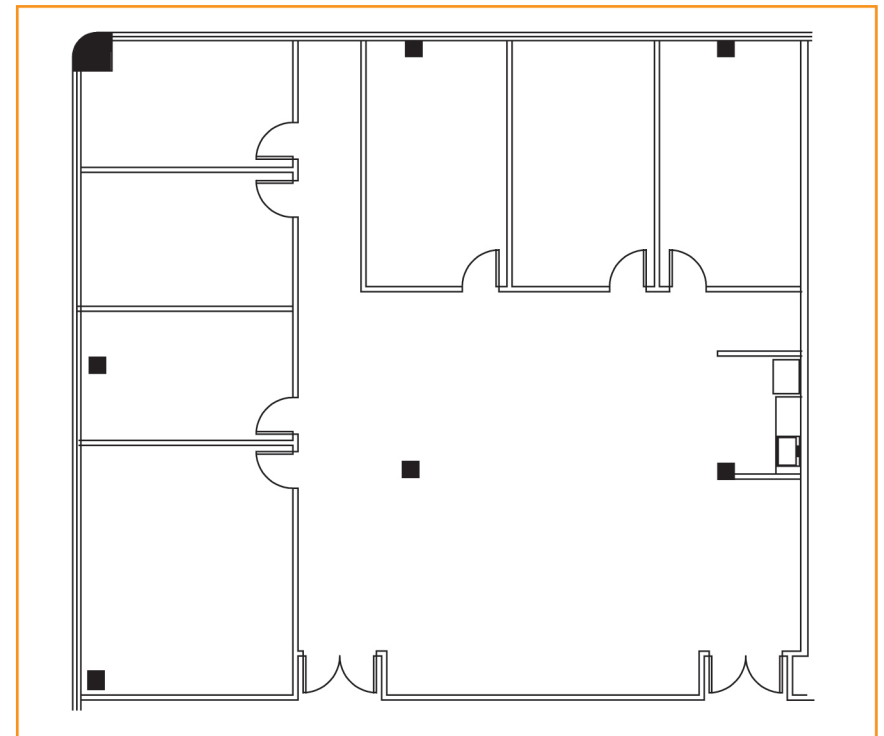
## 2nd FLOOR PLAN



COMMON AREA

\* Floor Plan May Not Be Exact or To Scale.

AVAILABLE  
**SUITE 240 / ±3,447 RSF**



\* The information contained herein is obtained through sources deemed reliable but has not been verified for accuracy or completeness and is subjected to errors, omissions and changes. We make no guarantee, warranty or representation about it. All information should be verified by the independent investigation of the recipient prior to the execution of any legal documents with regards to the purchase or lease of the Property.

**DANNY YU**

408.718.3069 | LIC #01114851 | danny.yu@svcpb.com  
1330 RIDDER PARK DRIVE, SAN JOSE, CA 95131