



LOCKEHOUSE



**Iconic Downtown San Mateo Restaurant For Lease
±3,563 Rentable SF Available
201 South B Street, San Mateo, CA**



LOCKEHOUSE

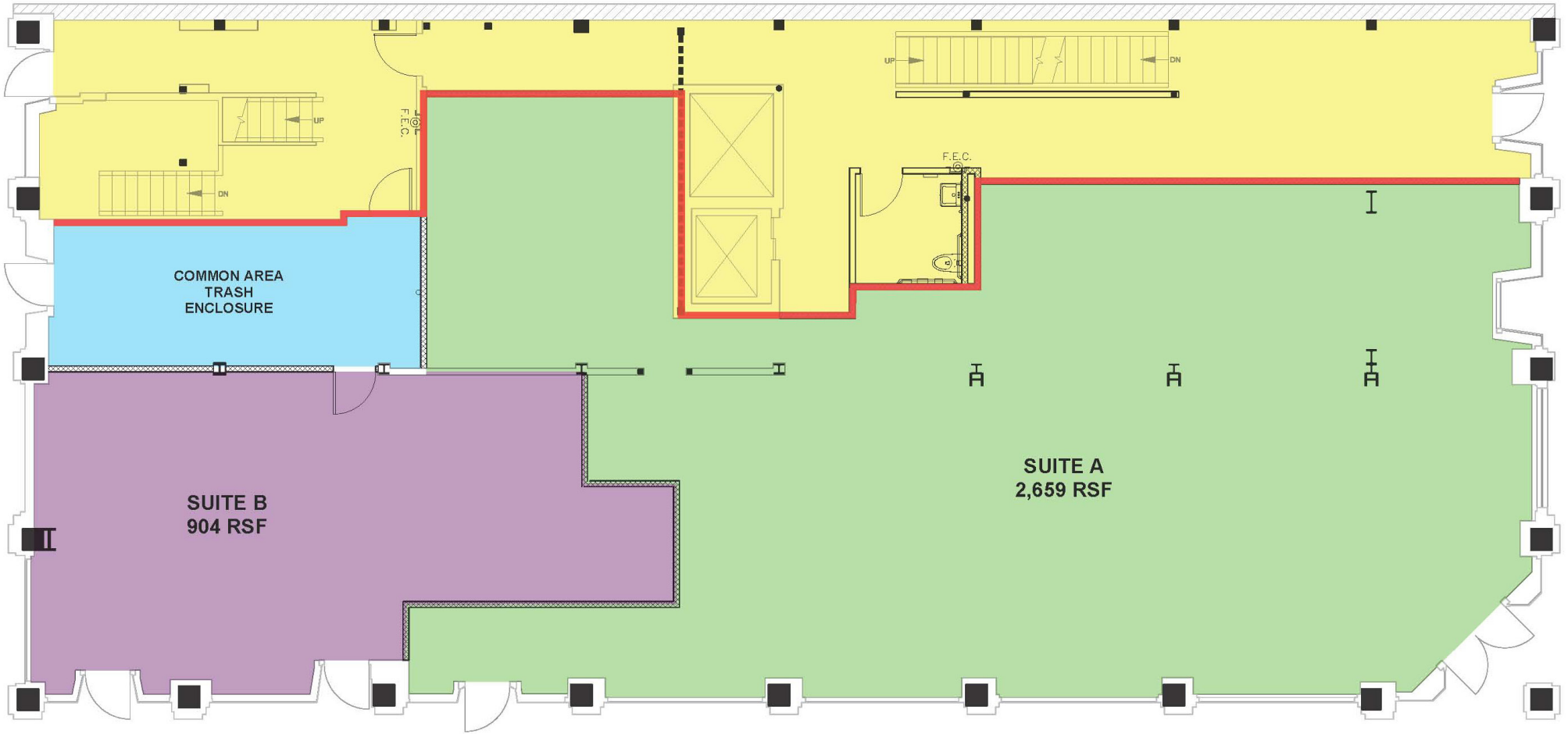


HIGHLIGHTS

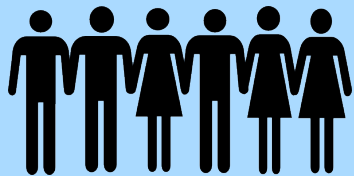
- Extremely rare mid-Peninsula restaurant space
- Existing restaurant infrastructure in place
- On the hard corner of South B Street and 2nd Avenue
- ±3,563 rentable SF available on ground floor with demising options
- One block from Caltrain



LOCKEHOUSE



Ground Floor Space Plan

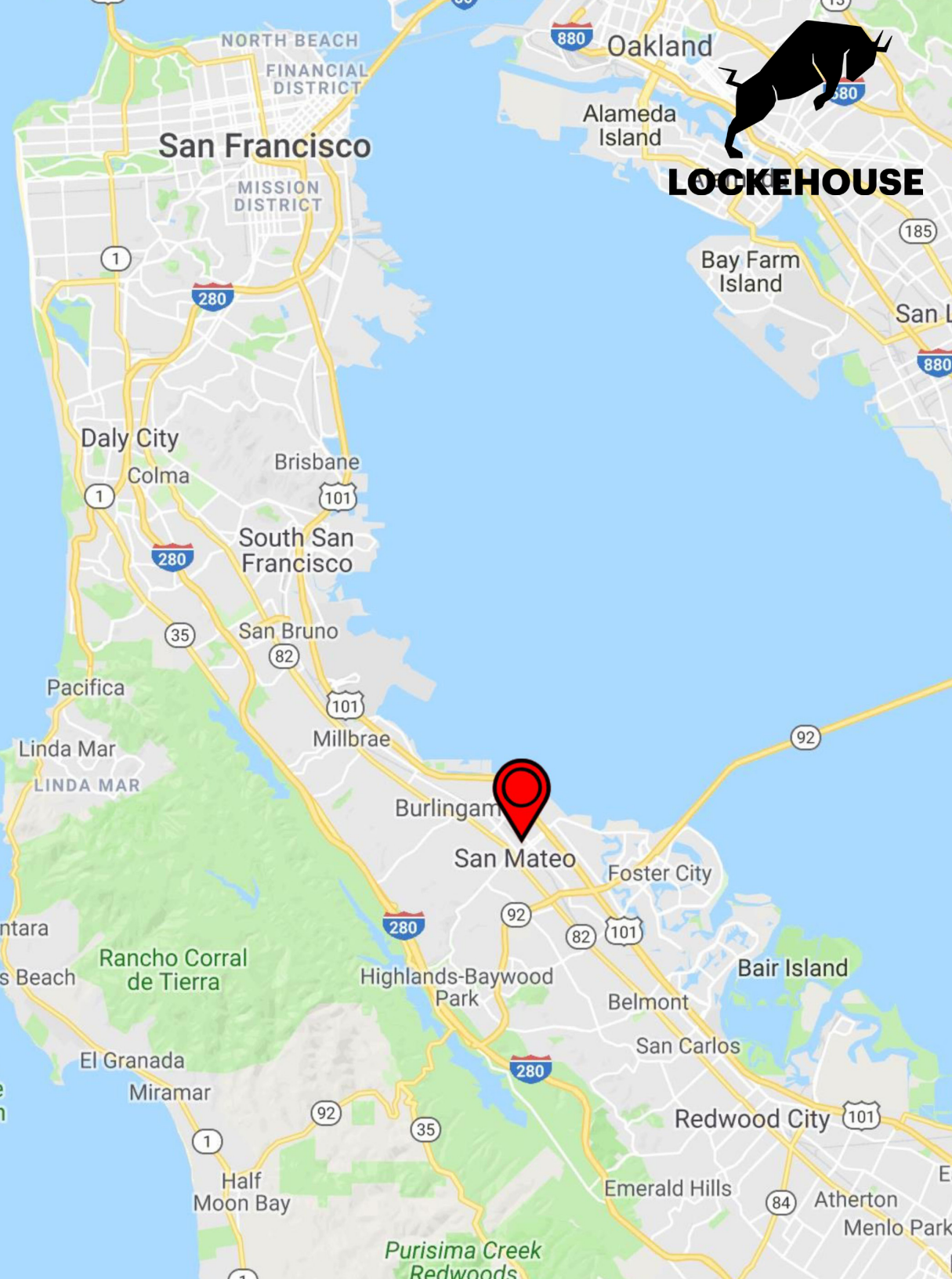


DEMOGRAPHICS

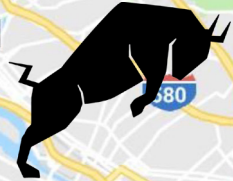
1 Mile 3 Miles 5 Miles

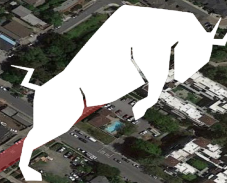
AHHI	\$148,306	\$174,952	\$186,864
Population	40,973	135,606	242,366
Daytime Population	16,690	105,448	171,126
Est. Total HH Expenditure	\$1.45 B	\$5.60 B	\$10.5 B

Pillar Point State Marine Conservation Area



LOCKEHOUSE





LOCKEHOUSE

The Melting Pot
FONDUE RESTAURANT

Caltrain

barre3

Orangetheory
FITNESS



CREAM

Spitz & Co
and out of a truck

verizon

CENTURY
THEATRES

VAULT
one sixty four

BAY WATCH
RESTAURANT

ROAM
RESTAURANT

Pacific Catch
Fresh Fish Grill

corepower
YOGA

2ND AVENUE

SOUTH B STREET

CHIPOTLE
MEXICAN GRILL

Peets Coffee

D
UNIVERSITY

FedEx

JOE & THE JUICE

swæetgreen

hummus
mediterranean kitchen

citibank

CHASE

PIZZA
HEART

Dräger's
MARKET

SOULCYCLE

WELLS
FARGO



EQUINOX

Downtown San Mateo



LOCKEHOUSE

Leasing Information

Chris Homs

(650) 548-2687

chris@lockehouse.com

Lic. 01901922

Aaron Dan

(650) 548-2676

aaron@lockehouse.com

Lic. 01916508

