

701-719 BROOKSEGE PLAZA DRIVE
WESTERVILLE, OHIO 43081



OFFICE FOR LEASE

5,157 SF Available Immediately

BROOKSEGE CORPORATE CENTER



PROPERTY FEATURES

- Building or monument signage available
- Tenant contracts directly for utilities and janitorial services

OVERVIEW

AVAILABLE	5,157 SF
ASKING RATE	\$9.50/SF Net
PARKING	Up to 10 parking spaces / 1,000 SF
2014 ESTIMATED OPERATING EXP.	\$4.06 / SF



For more information, please contact:

TOM SUGAR
Executive Vice President
(614) 883 1066
tsugar@continental-realty.com

BRENT STAMM, CCIM
Senior Vice President
(614) 883 1141
bstamm@continental-realty.com

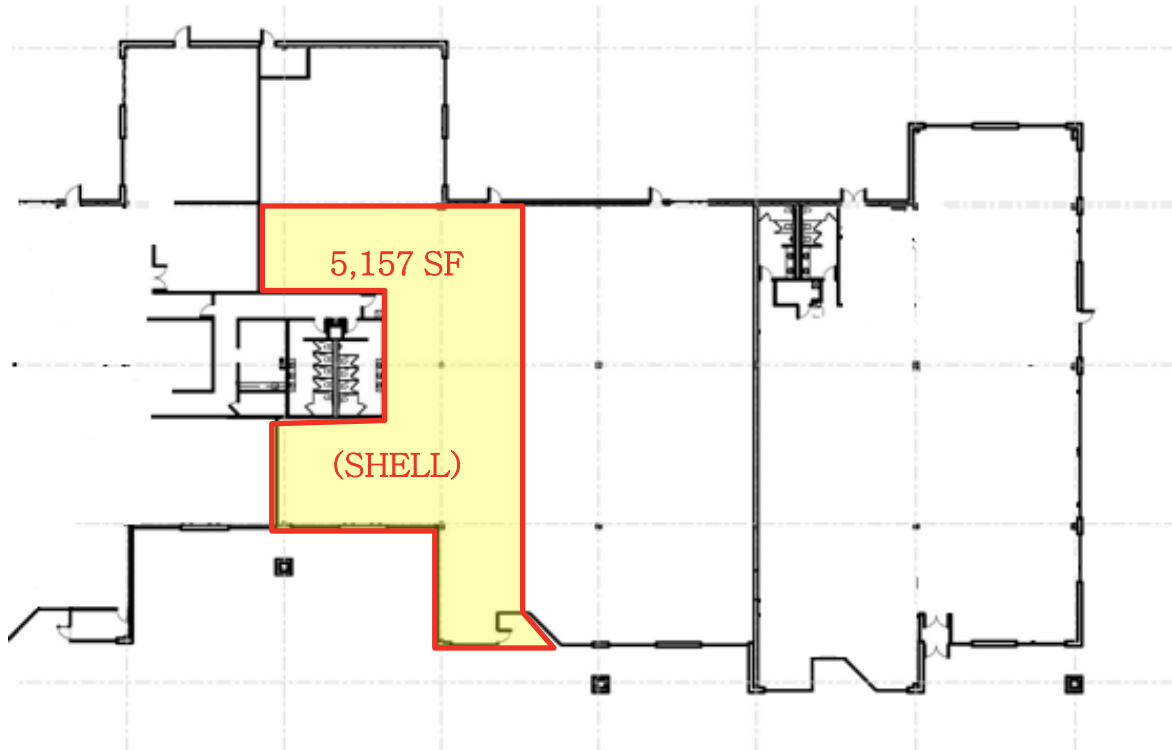
**CONTINENTAL REALTY /
CUSHMAN & WAKEFIELD ALLIANCE**
150 E. Broad Street, Suite 500
Columbus, OH 43215
www.continental-realty.com

The depiction in the included photograph of any person, entity, sign, logo or property, other than Continental Realty's (CR) client and the property offered by CR, is incidental only, and is not intended to connote any affiliation, connection, association, sponsorship or approval by or between that which is incidentally depicted and CR or its client. This listing shall not be deemed an offer to lease, sublease or sell such property; and, in the event of any transaction for such property, no commission shall be earned by or payable to any cooperating broker except if otherwise provided pursuant to the express terms, rates and conditions of CR's agreement with its principal, if, as and when such commission (if any) is actually received from such principal. (A copy of the rates and conditions referred to above with respect to this property is available upon request.)

701-719 BROOKSEGE PLAZA DRIVE

Office for Lease

5,157 SF
AVAILABLE
IMMEDIATELY



For more information, please contact:

TOM SUGAR
Executive Vice President
(614) 883 1066
tsugar@continental-realty.com

BRENT STAMM, CCIM
Senior Vice President
(614) 883 1141
bstamm@continental-realty.com

**CONTINENTAL REALTY /
CUSHMAN & WAKEFIELD ALLIANCE**
150 E. Broad Street, Suite 500
Columbus, OH 43215
www.continental-realty.com

The depiction in the included photograph of any person, entity, sign, logo or property, other than Continental Realty's(CR) client and the property offered by CR, is incidental only, and is not intended to connote any affiliation, connection, association, sponsorship or approval by or between that which is incidentally depicted and CR or its client. This listing shall not be deemed an offer to lease, sublease or sell such property; and, in the event of any transaction for such property, no commission shall be earned by or payable to any cooperating broker except if otherwise provided pursuant to the express terms, rates and conditions of CR's agreement with its principal, if, as and when such commission (if any) is actually received from such principal. (A copy of the rates and conditions referred to above with respect to this property is available upon request.)