

# SHOVEL READY INDUSTRIAL LAND

EXCLUSIVE LISTING | SWC THORNTON ROAD & LAWRENCE STREET | CASA GRANDE, ARIZONA

**LOCATION** Property is located at the SWC of Thornton Road and Lawrence Street in Casa Grande, Pinal County, Arizona

**SIZE** ±39.10 acres

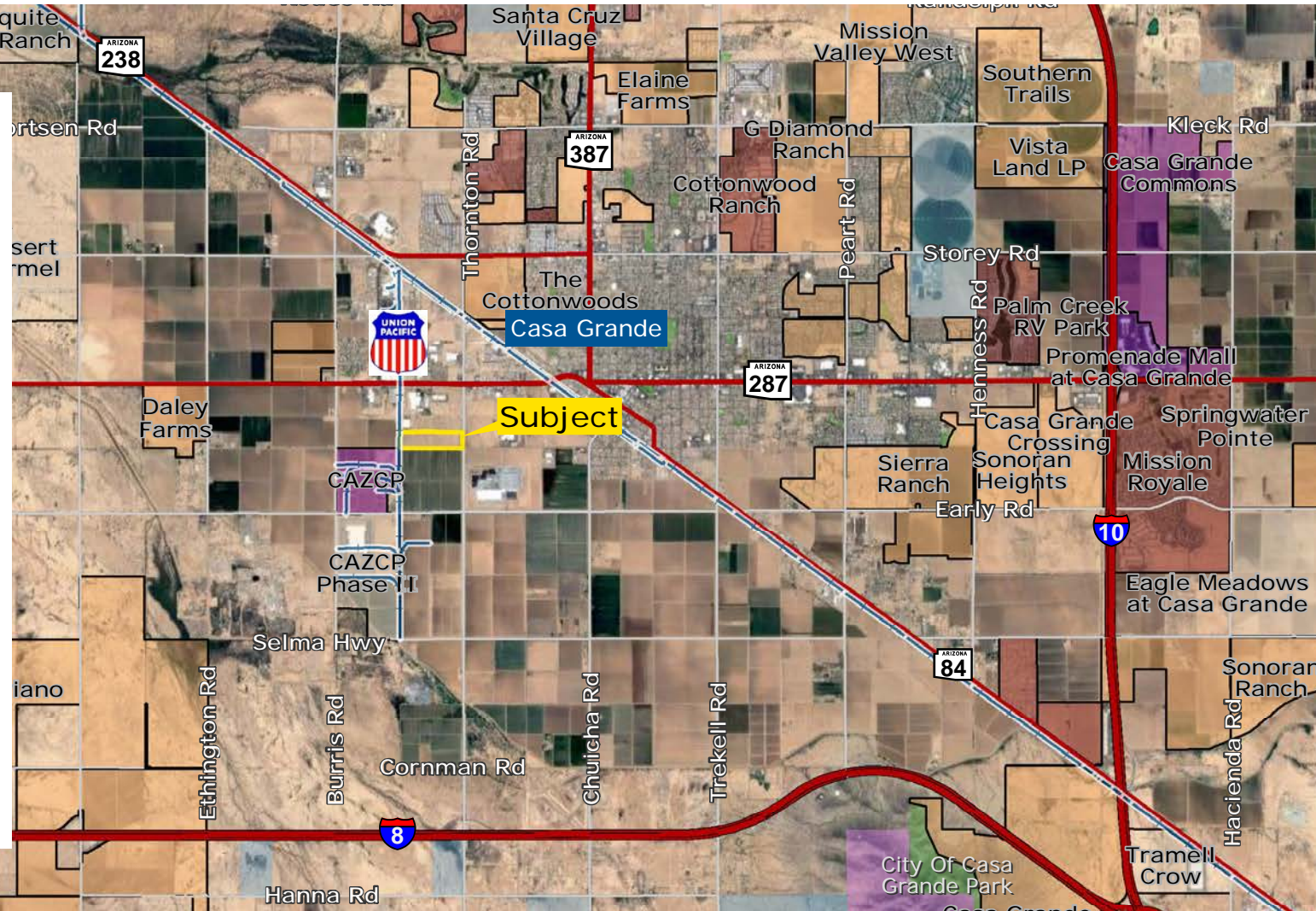
**ASKING PRICE** \$1.75 per sq. ft.

**PARCELS** 503-89-045, 503-89-044, 503-89-043, 503-89-042, 503-89-041, 503-89-040, 503-89-039, 503-89-038

**ZONING** Industrial, I-1

## COMMENTS

- Rail easement on property through private developer
- Sewer and water to site
- Shovel ready
- Major employment center in Casa Grande
- Excellent truck access via Thornton Road, I-8 and I-10
- Adjacent uses primarily food processing and warehouse distribution
- Eligible for new market tax credits
- Included in the Arizona Commerce Authority Opportunity Zone. [Click here for more information.](#)



Kirk McCarville | [kmccarville@landadvisors.com](mailto:kmccarville@landadvisors.com)

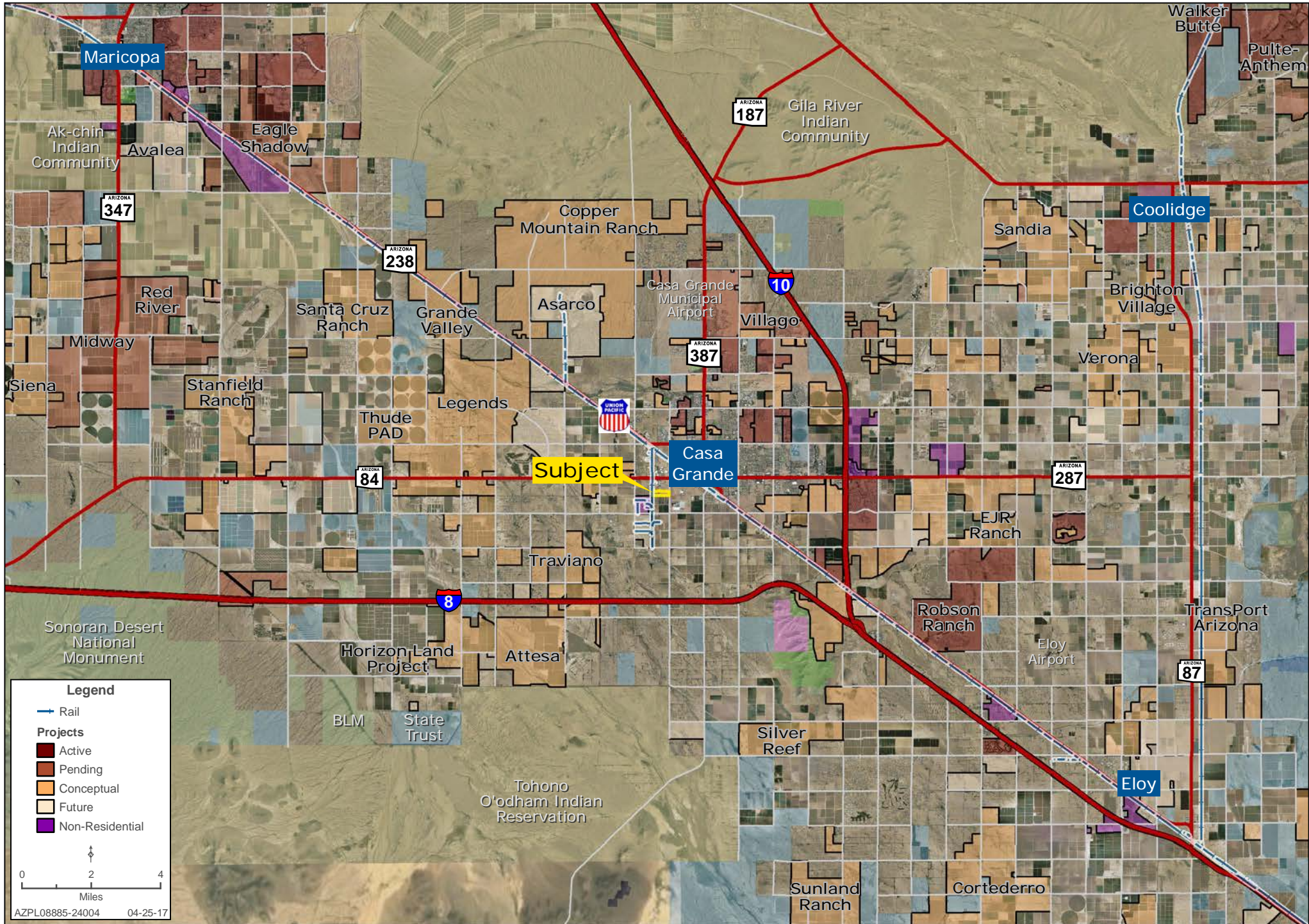
442 W. Kortsen Road, Suite 203, Casa Grande, Arizona 85122 ph. 520.251.0348 | [www.landadvisors.com](http://www.landadvisors.com)

The information contained herein is from sources deemed reliable. We have no reason to doubt its accuracy but do not guarantee it. It is the responsibility of the person reviewing this information to independently verify it. This package is subject to change, prior sale or complete withdrawal. AZPL08885 - 5.10.18



# REGIONAL MAP

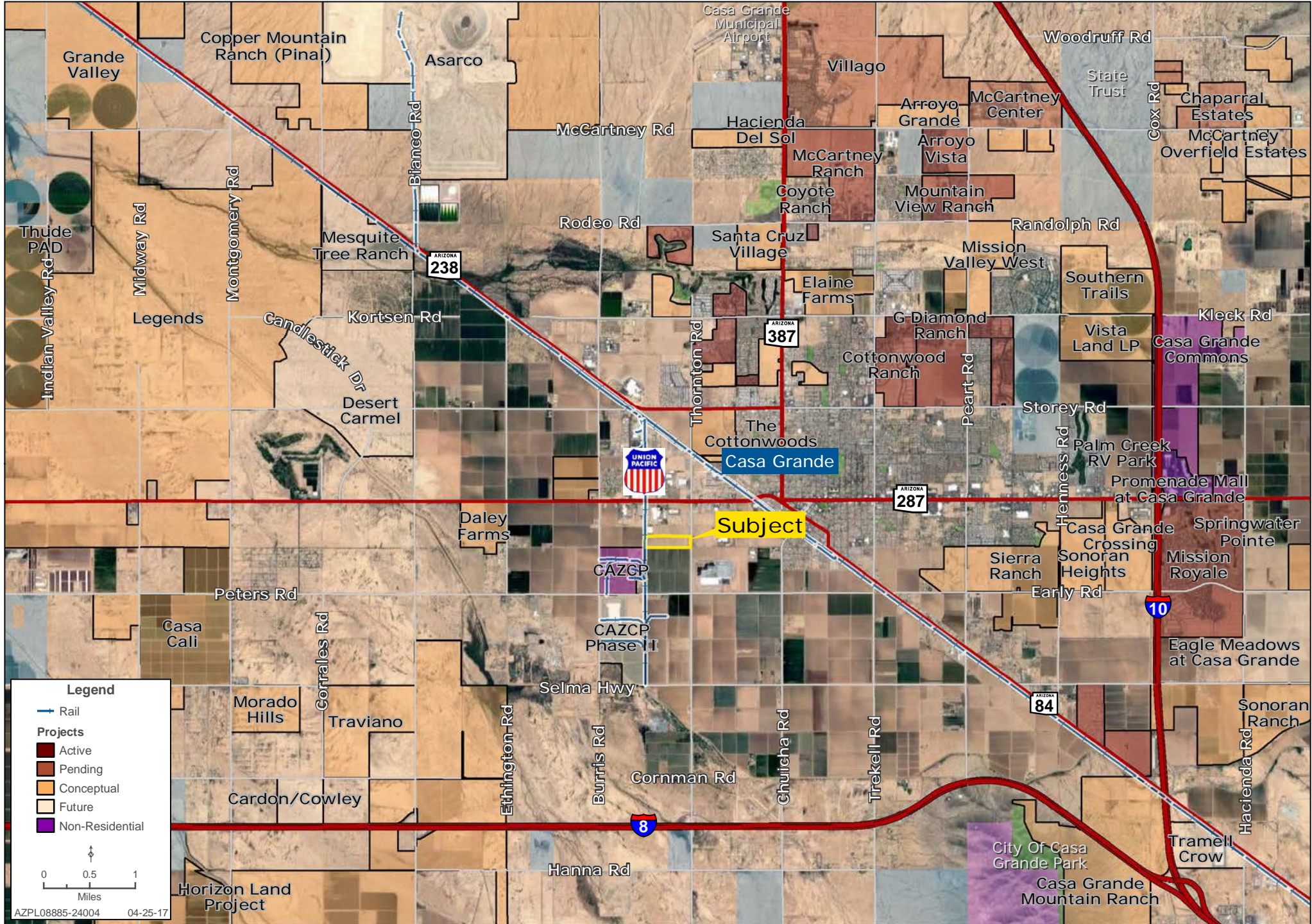
Kirk McCarville | 480.483.8100 | www.landadvisors.com





# SURROUNDING DEVELOPMENT MAP

Kirk McCarville | 480.483.8100 | www.landadvisors.com





# PROPERTY DETAIL MAP

Kirk McCarville | 480.483.8100 | www.landadvisors.com

