

now leasing

UNION
6985
PARK



JAMES CAMPBELL COMPANY LLC

SURROUNDING AREA

Conveniently located in the center of Salt Lake, within minutes of fine residential neighborhoods as well as the major freeway system, Fashion Place Mall and numerous restaurants and lodging.



4 MINUTES TO I-15

15

MINUTES FROM
DOWNTOWN SALT LAKE CITY

20

MINUTES FROM THE
SALT LAKE CITY
INTERNATIONAL
AIRPORT

UNION PARK AVENUE

FORT UNION BLVD

900 EAST

900 EAST

FORT UNION BLVD



FIVE GUYS
FAMOUS
BURGERS and FRIES



GNC



DSW



Michael's
LANE BRYANT





15

MINUTES FROM
WORLD-CLASS SKIING
AND OUTDOOR ACTIVITIES



UNION 6985 PARK

Each Union Park building has a two-story open atrium lobby. The buildings have stunning views of the Salt Lake Valley. Covered parking is available and the buildings are equipped with high-speed fiber optic network and Internet connectivity, as well as centralized security and surveillance.

\$25.75

PSF, FULL SERVICE

CLASS A

FINISHES

ON SITE

PROPERTY MANAGEMENT

Dana Baird, CCIM

Executive Managing Director
+1 801 303 5526
dana.baird@cushwake.com

Mike Richmond

Executive Managing Director
+1 801 303 5434
mike.richmond@cushwake.com

Amanda Lawson

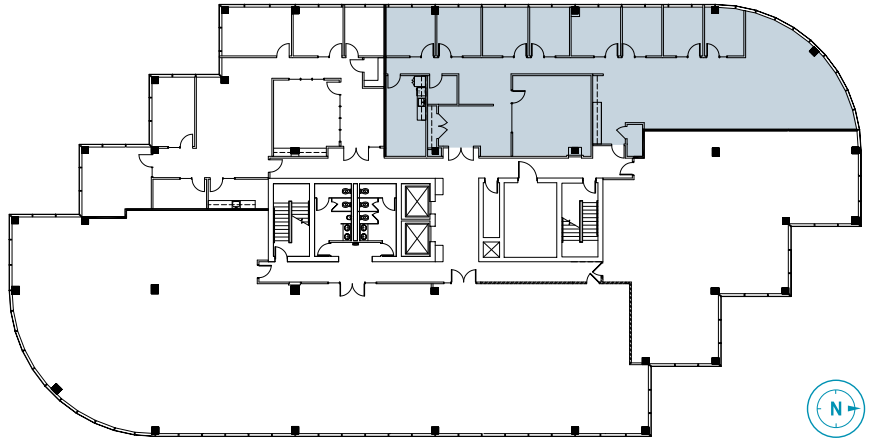
Senior Associate
+1 801 303 5492
amanda.lawson@cushwake.com



**CUSHMAN &
WAKEFIELD**

170 South Main Street Suite 1600
Salt Lake City, UT
Main +1 801 322 2000
Fax +1 801 322 2040
cushmanwakefield.com

AVAILABLE SPACE



SIXTH FLOOR

Floor	Suite	Size	Available
6	625	4,108	Immediately



Cushman & Wakefield Copyright 2019. No warranty or representation, express or implied, is made to the accuracy or completeness of the information contained herein, and same is submitted subject to errors, omissions, change of price, rental or other conditions, withdrawal without notice, and to any special listing conditions imposed by the property owner(s). As applicable, we make no representation as to the condition of the property (or properties) in question. (G:\Shared\Apps\Gigas\1 - Projects\Richmond, Mike\1 - Flyers\Union Park\2019Update\UnionPark_3.indd)