

# NAI Lake Charles

For Lease

*6,099 Sq. Ft.*  
*Office Space*

*791 E Bayou Pines*  
Lake Charles, Louisiana

## *Property Features*

- Space available in medical community
  - Available after September 2014
- Near St. Pat's Hospital and other medical offices and the downtown business district
- Easy access to I-10 and I-210
- Currently set up with 16 offices, a conference room, lobby/waiting area, and kitchen/break areas
  - See floor plan on following page
- 35 space parking lot
- Space could be divided to accommodate multiple tenants
- Long term NNN lease desired
- Owner will consider selling
- Annual Lease Rate of \$18PSF
- Call LO to schedule showing appointment



NAI LAKE CHARLES IS LICENSED BY THE LOUISIANA  
REAL ESTATE COMMISSION.

1424 Ryan Street  
Lake Charles, Louisiana 70601  
+1 337 310 7333  
[nailakecharles.com](http://nailakecharles.com)

For more information:

*Eddie Conner, GRI*

+1 337 310 7333 • [eddieconner@nailakecharles.com](mailto:eddieconner@nailakecharles.com)

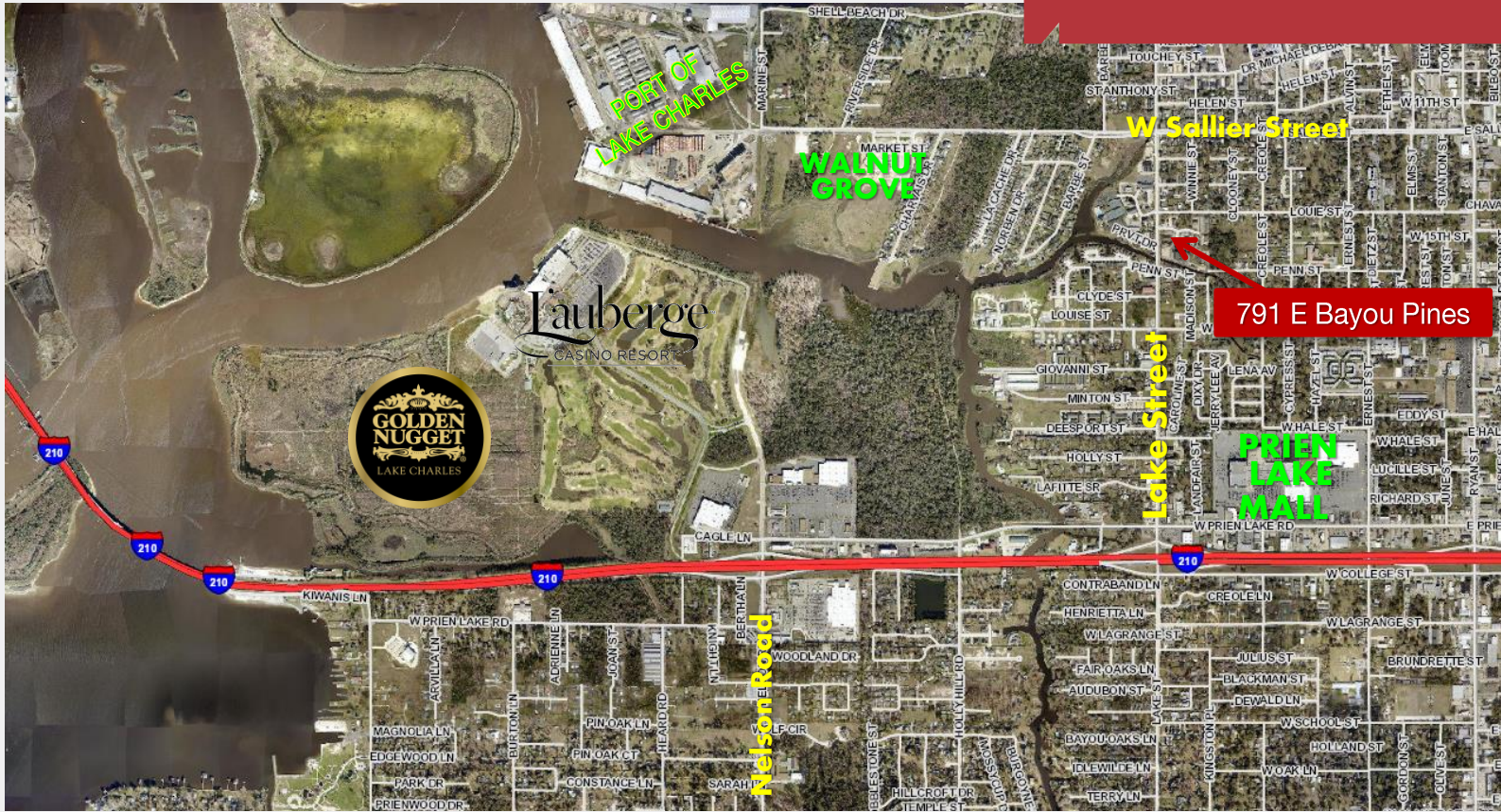


# NAI Lake Charles

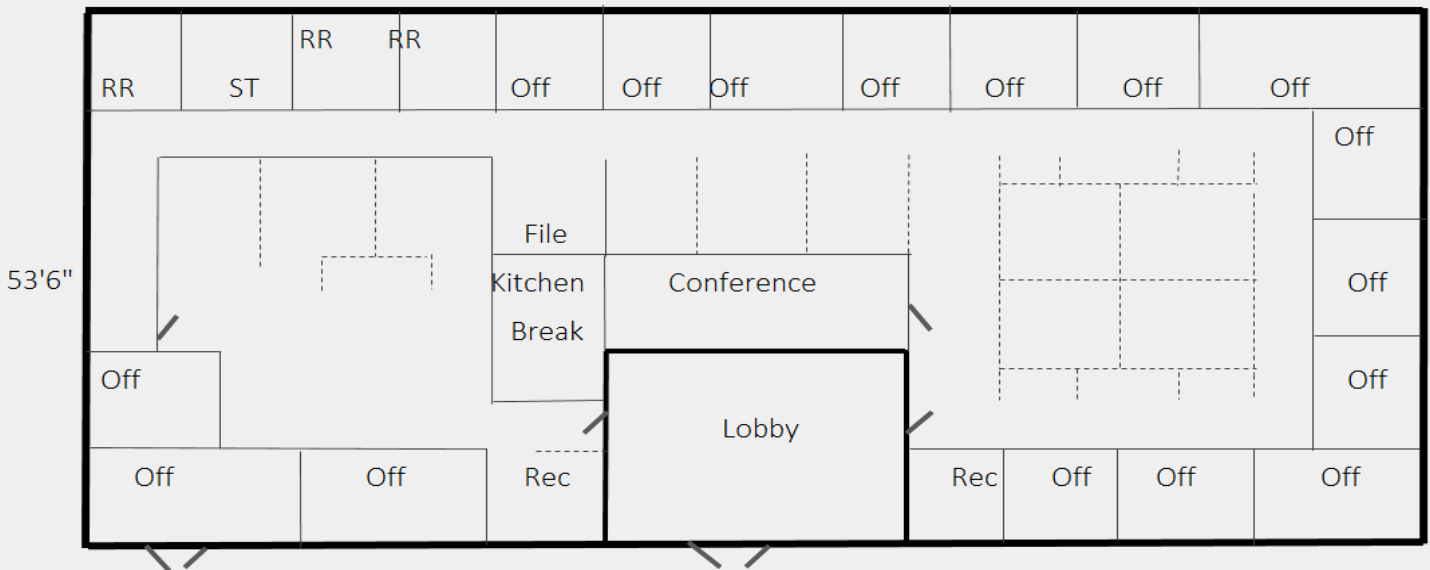
For Lease

6,099 Sq. Ft.

Office Space



114'



NAI LAKE CHARLES IS LICENSED BY THE LOUISIANA  
REAL ESTATE COMMISSION.

1424 Ryan Street  
Lake Charles, Louisiana 70601  
+1 337 310 7333  
[nailakecharles.com](http://nailakecharles.com)

For more information:

**Eddie Conner, GRI**

+1 337 310 7333 • [eddieconner@nailakecharles.com](mailto:eddieconner@nailakecharles.com)