

TRIBECA

NEW YORK  
NY

# 105 HUDSON STREET



# SPACE DETAILS

## LOCATION

Northwest corner of Franklin Street

## APPROXIMATE SIZE

Space A

Ground Floor	4,030 SF*
Lower Level	820 SF*

Space B

Ground Floor	2,390 SF*
Lower Level	2,590 SF*

Total 9,830 SF

*\*Can be combined*

## POSSESSION

Immediate

## TERM

Long term

## FRONTAGE

Space A

35 FT on Hudson Street
95 FT on Franklin Street

Space B

20 FT on Hudson Street
------------------------

## SITE STATUS

Formerly Nobu and Nobu Next Door

## NEIGHBORS

Mr. Chow, Bubby's, Shinola, Issey Miyake, Thom Browne, Patron of the New, Tamarind, everafter, Locanda Verde, Noted Tribeca, Maison Kayser and Thierry Despont Gallery

## COMMENTS

Strong corner with tremendous wraparound frontage

Strong retail adjacencies to fashion, design and restaurant tenants

One block from the 1 subway station and critically acclaimed Greenwich Hotel

All uses allowed

Lower Level is selling, has a sidewalk hatch facing Hudson Street and a loading elevator facing Franklin Street

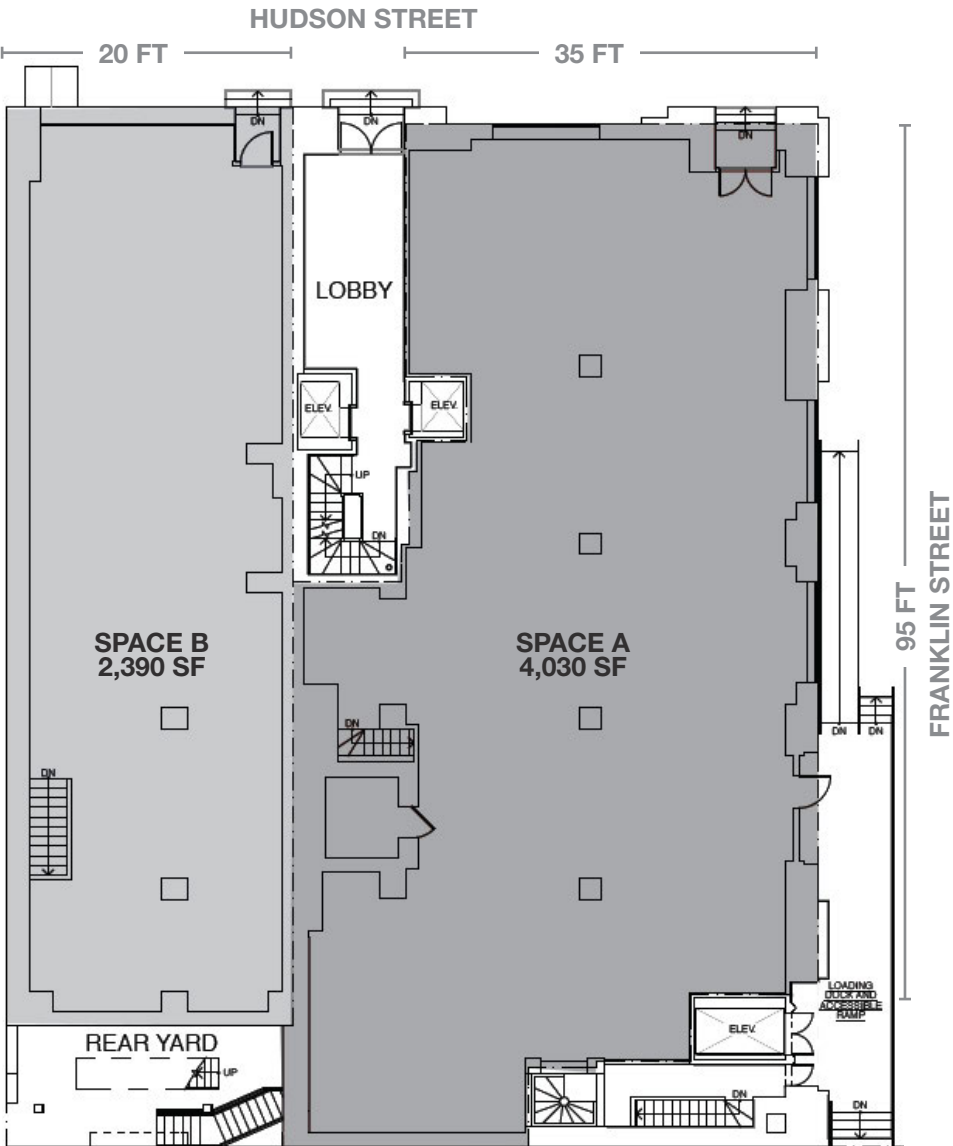
Direct deal, no key money, fully vented restaurant opportunity with infrastructure in place

Gorgeous retail space at the base of Carrere and Hastings Powell building

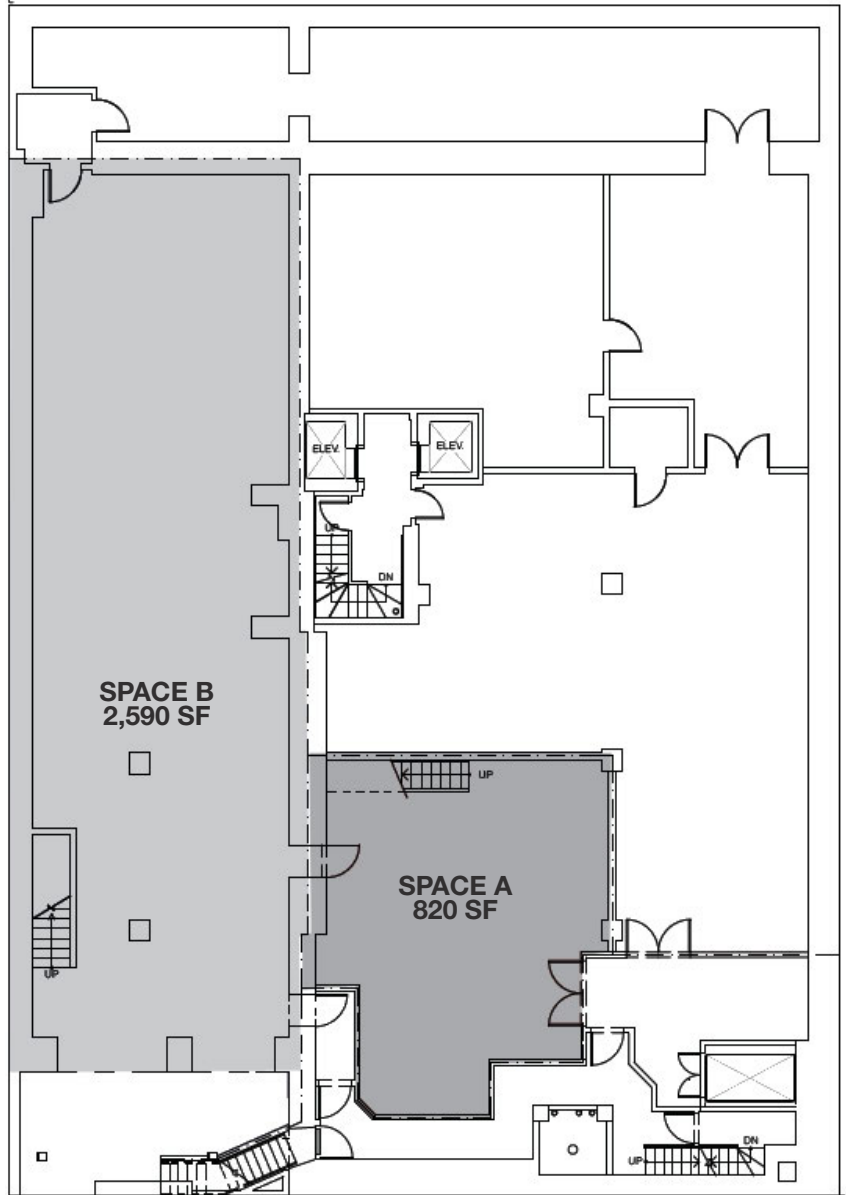


# FLOOR PLANS

## GROUND FLOOR



## LOWER LEVEL





# AREA NEIGHBORS





# AREA RETAIL



➔ COMING SOON

## CONTACT EXCLUSIVE AGENTS

**KAREN BELLANTONI**  
212.331.0116  
karen.bellantoni@ngkf.com

**ANDREW STERN**  
212.351.9353  
andrew.stern@ngkf.com

**ALEXANDRA YANOFF**  
212.916.2936  
alexandra.yanoff@ngkf.com



NGKF.COM

© 2019 NEWMARK KNIGHT FRANK RETAIL. The information contained herein has been obtained from sources deemed reliable but has not been verified and no guarantee, warranty or representation, either express or implied, is made with respect to such information. Terms of sale or lease and availability are subject to change or withdrawal without notice.