

3345 SELDON COURT | FREMONT, CA

7,178± SF WAREHOUSE AVAILABLE FOR LEASE



CONTACT EXCLUSIVE AGENTS:

FEATURES:

- **Available:** 7,178± SF with Small Fenced Yard
- **Office Area:** 3,400± SF on 2 Floors with 3 Restrooms & Breakroom
- **Loading:** 2 Grade Level Doors
- **Clear Height:** 16'5"
- **Lease Rate:** \$1.25/SF, Gross
- **Location:** Located in the Jonce Thomas Industrial Park, Located off of Osgood Road. Excellent access to I-680 & I-880 via Automall Parkway

ANDREW STODDARD

astoddard@lee-associates.com

510-903-7619

LIC# 01844721

GARRETT DREW

gdrew@lee-associates.com

510-903-7613

LIC# 01923730



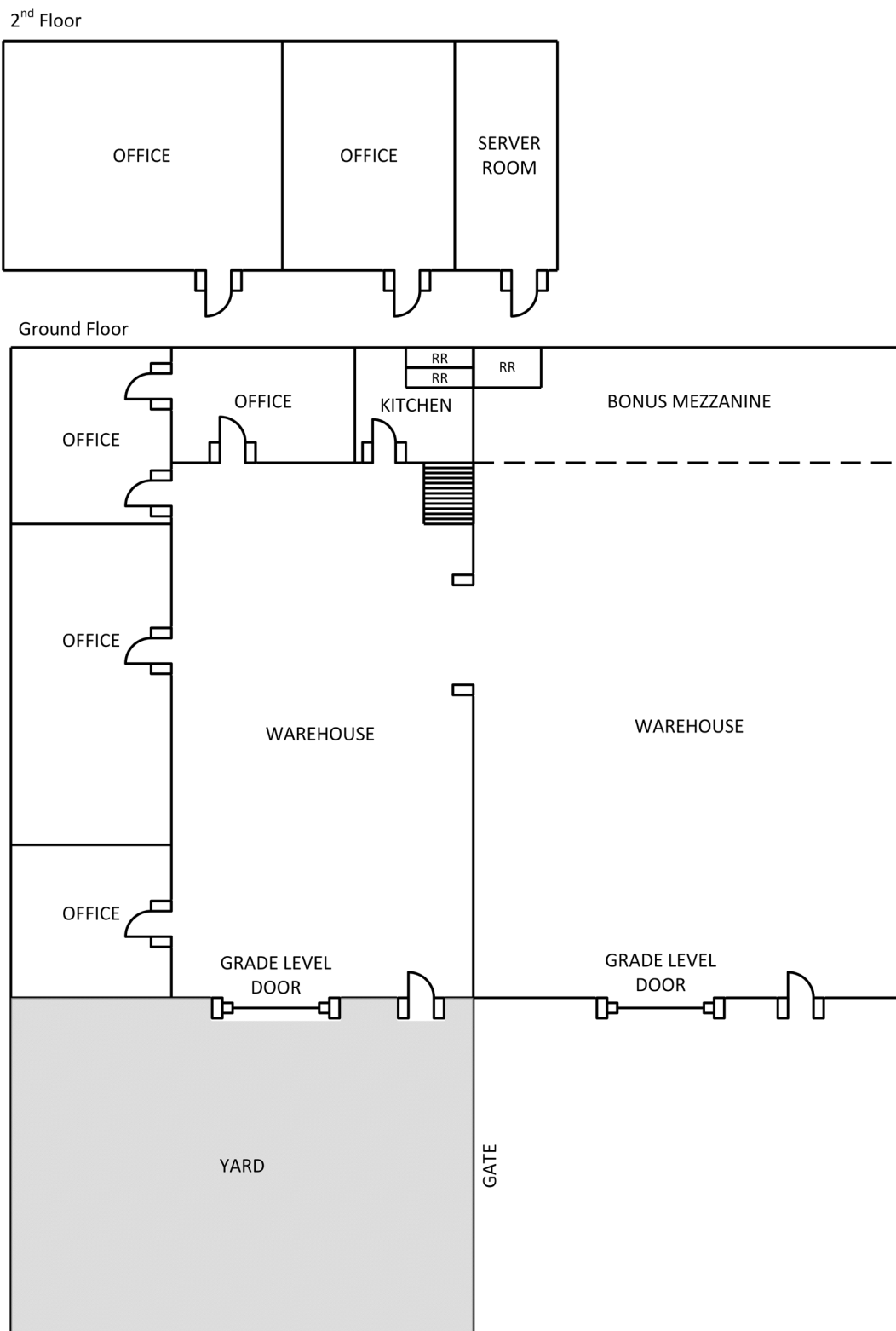
**LEE &
ASSOCIATES®**

COMMERCIAL REAL ESTATE SERVICES

The information contained herein is based on estimates and assumptions and is presented for illustration purposes only. No representations, warranties or guarantees of any kind are made.

3345 SELDON COURT | FREMONT, CA

7,178± SF WAREHOUSE AVAILABLE FOR LEASE



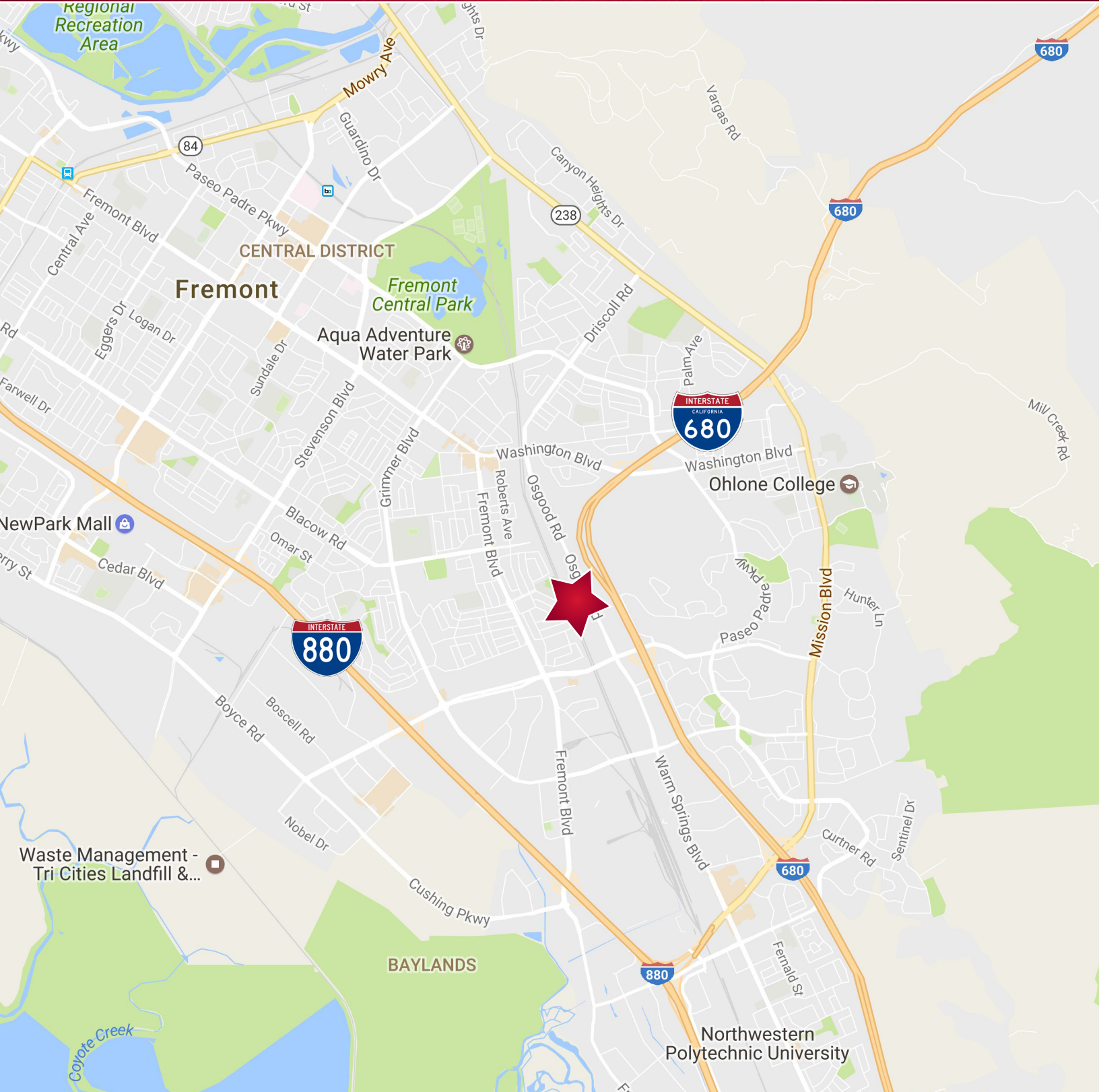
ANDREW STODDARD
astoddard@lee-associates.com
510-903-7619
LIC# 01844721

 **LEE &
ASSOCIATES**[®]
COMMERCIAL REAL ESTATE SERVICES

GARRETT DREW
gdrew@lee-associates.com
510-903-7613
LIC# 01923730

3345 SELDON COURT | FREMONT, CA

7,178± SF WAREHOUSE AVAILABLE FOR LEASE



ANDREW STODDARD
astoddard@lee-associates.com
510-903-7619
LIC# 01844721



GARRETT DREW
gdrew@lee-associates.com
510-903-7613
LIC# 01923730